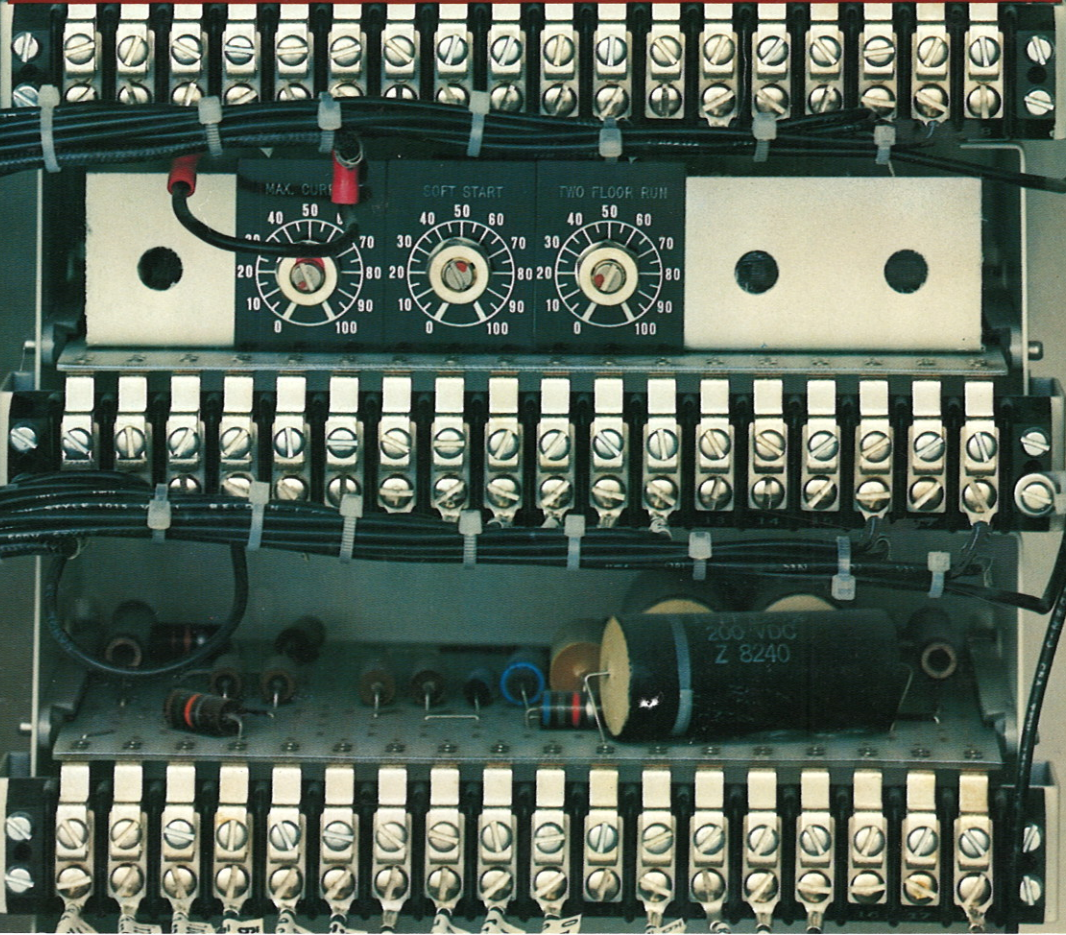




montgomery[®]
SSC-6010

MONTGOMERY ELEVATOR SOLID STATE POWER CONTROL SYSTEM



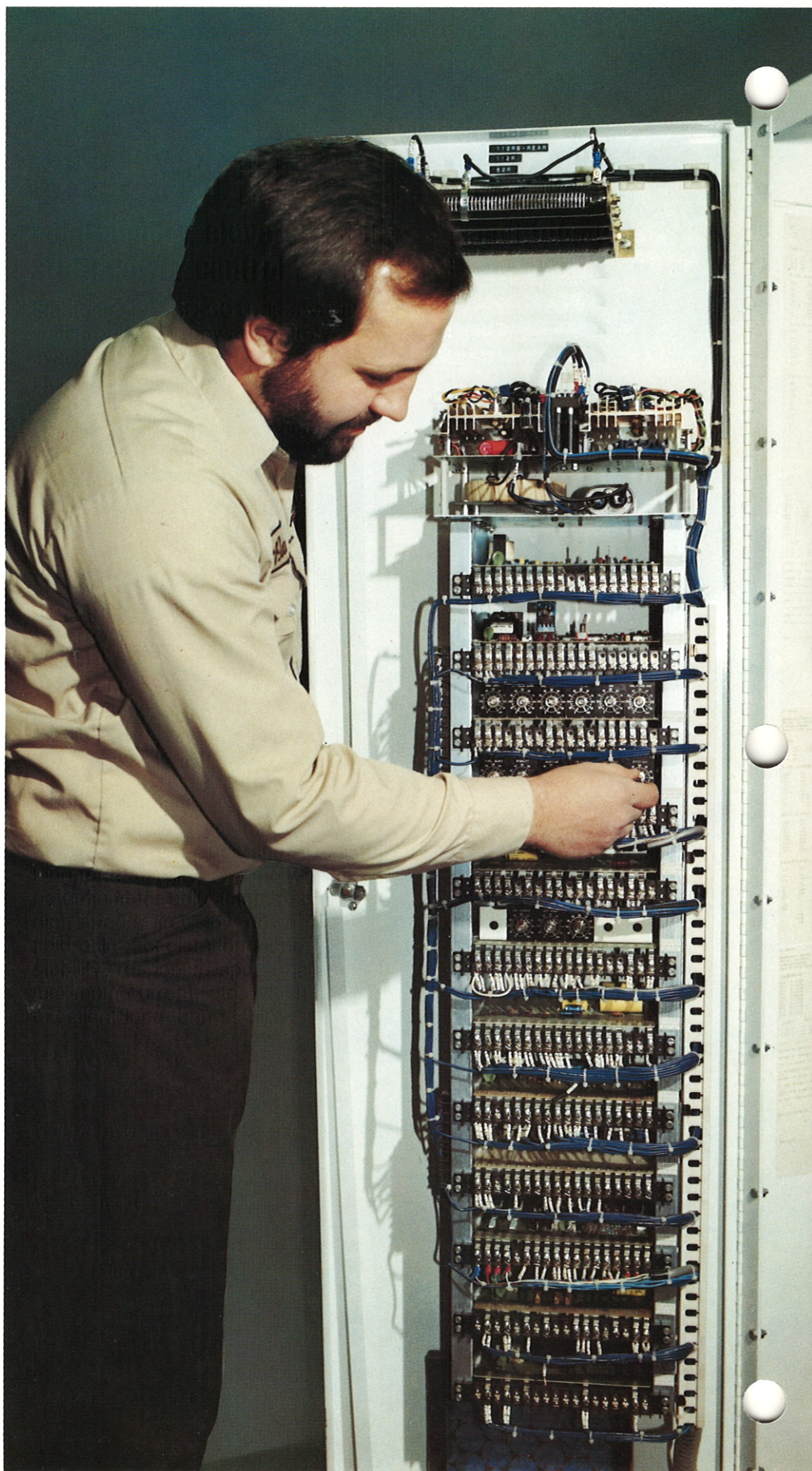
SSC-6010

montgomery elevator solid state power control system

Montgomery SSC-6010 is a variable voltage elevator power control system which provides complete static control for adjustable speed, acceleration and deceleration, precise leveling accuracy and exceptionally smooth stops. Montgomery's SSC-6010 is designed for all traction elevators, geared and gearless, operating between speeds of 100-1200 fpm.

SSC-6010 PERFORMANCE CONTROL MODULE

The Montgomery SSC-6010 performance control module revolutionizes elevator adjusting, previously a tedious task consuming many man-hours. With SSC-6010, trained Montgomery technicians can quickly tune the system for most desirable performance and excellent long-term stability by simply making potentiometer adjustments such as high speed, first slow down, leveling, field gain, acceleration slope, stability, response, speed gain, maximum current, etc. which achieve excellent long-term stability.



SSC-6010

**reduces power
consumption up to
30% per elevator!**

By eliminating the motor-generator set with its greater power-consuming characteristics, the Montgomery SSC-6010 solid state elevator power control system will reduce elevator power consumption up to 30%. The power savings is achieved by the use of a transistor-like device called a thyristor which enables the Montgomery SSC-6010 to convert ac line power directly to controlled dc power. The inherently precise solid state regulating circuitry built into SSC-6010 assures superior speed accuracy and speed-changing performance, precise leveling and exceptionally smooth stops.

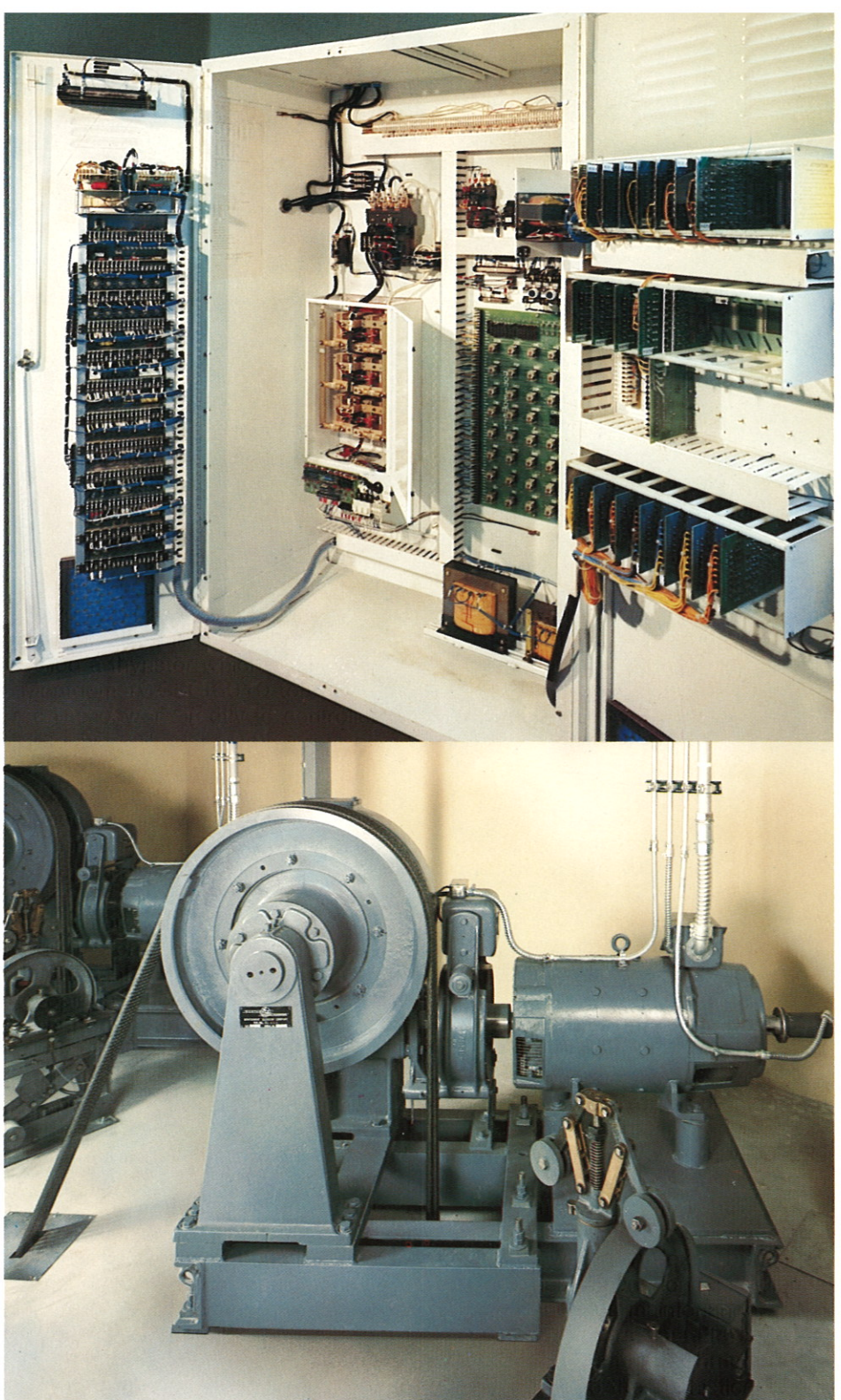
In addition to the savings in power which is enjoyed by building owners and tenants, SSC-6010 also helps people in other areas:

Architects and Engineers

- By eliminating the motor-generator set, less machine room space is required and machine room loads are reduced.
- The entire system weighs less and produces less heat. Therefore, machine room ventilating and air-conditioning requirements are lowered. An extra benefit—less heat means longer equipment life and less maintenance.

Contractors, Installers, Maintenance Technicians

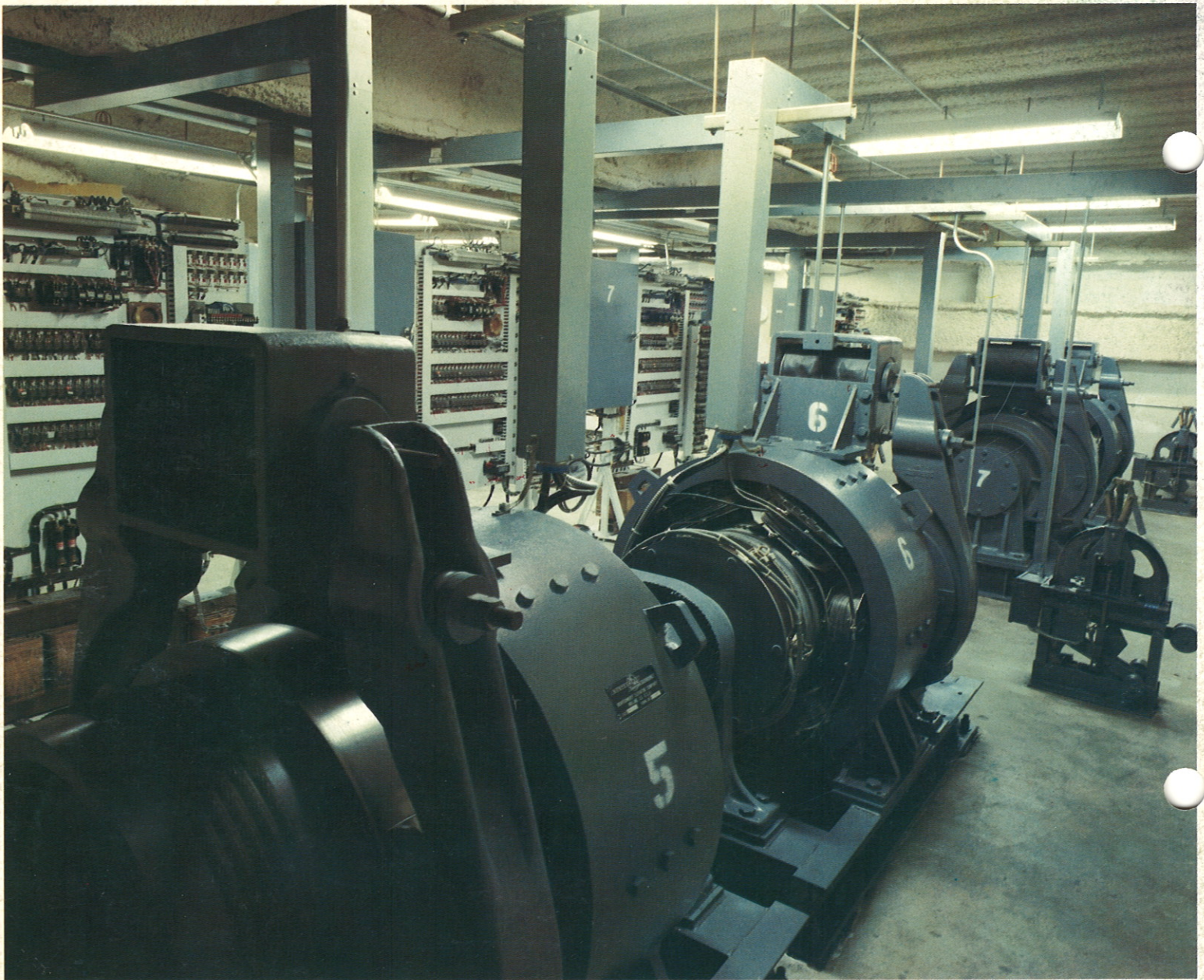
- Due to the sophisticated adjusting section and the elimination of the motor-generator set, both installation time and tuning time are reduced.
- The thyristor unit is of modular construction for quick access and maintenance.
- Solid state circuitry is inherently trouble-free.
- A complete ac motor and dc generator set is eliminated, offering a substantial maintenance reduction.



MONTGOMERY GEARED MACHINE WITH SPEED-REFERENCE TACHOMETER GENERATOR

An important part of the Montgomery SSC-6010 overall regulation system is the direct connected tachometer generator (far right) which provides exceptional linear voltage outputs in direct proportion to speed. Variations due to temperature, drift, ripple or reversing error are minimized to

provide highly accurate input signals to the SSC-6010 thyristor power unit for speed feedback in regulating the control system.



Montgomery SSC-6010 was pioneered and developed by Montgomery Elevator more than 15 years ago. Since then thousands have been installed in both medium and high-speed elevator systems. Montgomery SSC-6010 is available through Montgomery's 220 contracting offices in North America. For additional information, call your nearest Montgomery representative in North America or abroad. You'll find the number in the yellow pages.



**ELEVATORS/ESCALATORS
POWER WALKS & RAMPS**

MONTGOMERY ELEVATOR COMPANY, MOLINE, ILLINOIS 61265 MONTGOMERY ELEVATOR COMPANY, LIMITED, TORONTO, ONTARIO, M9B3S5 OFFICES IN PRINCIPAL CITIES OF NORTH AMERICA.

montgomery moves people