



montgomery
moves people

ELEVATORS ESCALATORS • POWER WALKS AND RAMPS

MONTGOMERY ELEVATOR COMPANY, MOLINE, ILLINOIS 61265 MONTGOMERY ELEVATOR COMPANY, LIMITED, TORONTO, ONTARIO M9B3S5 OFFICES IN PRINCIPAL CITIES OF NORTH AMERICA.



montgomery[®] elevators/escalators power walks & ramps

CONTENTS

COVER.....	1
FOREWORD.....	2-3
CONTROLS: SSC-6010 solid state and ESP Group Supervisory.....	4
PASSENGER ELEVATORS	
High Speed Traction.....	5
Medium and Low Speed Traction.....	6
SPM standard pre-manufactured traction.....	7
Basement Traction.....	8
Hospital Traction.....	9
Oil Hydraulic.....	10
SPM Oil Hydraulic.....	11
ENTRANCES	
Single Speed Slide.....	12
Two Speed Slide.....	12
Center Opening Slide.....	12
Cars and Fixtures.....	13
FREIGHT ELEVATORS	
Traction.....	14
Oil Hydraulic.....	15
Freight Elevator Doors.....	18
DUMBWAITERS.....	16-17
Traction and Electric Drum Drive.....	
DUMBBWAITER DOORS.....	18
ESCALATORS	
Crystal Balustrade.....	20
Solid Balustrade.....	21
Standard Equipment.....	22
POWER WALKS AND POWER RAMPS	
	23
PREVENTIVE MAINTENANCE.....	24
SALES/SERVICE OFFICES.....	24

FOR OVER 80 YEARS

The Montgomery Elevator Company has maintained the highest standard of quality in design and manufacture of vertical transportation equipment. During these years, Montgomery Elevator Company has provided equipment for a wide variety of vertical transportation requirements.

PRODUCTS

Montgomery's full product line includes: Electric Elevators - Geared, Gearless and Oil Hydraulic, Passenger and Freight; Standard Pre-Manufactured Passenger Elevators - Geared or Oil Hydraulic; Escalators; Power Walks and Power Ramps; Electric Dumbwaiters; Stage, Sidewalk and Other Special Lifts; Cross Over Bridges; Solid State Controls.

RESEARCH & DEVELOPMENT

A continuing program of research and development is a major Montgomery effort. Specialized equipment in Montgomery's tower laboratory provides facilities for engineered-testing of existing and proposed elevator equipment. Montgomery's search for improved design, greater safety and more economical operation is unending.

SALES & SERVICE

The Montgomery Sales and Service organization, second largest in the industry, has more than 200 offices throughout North America (U.S., Canada, Mexico, Caribbean) and overseas. Montgomery is the largest independent exclusive elevator and escalator manufacturer in the Western Hemisphere.

Montgomery's eight manufacturing facilities, each fully staffed for the manufacture and assembly of elevator and escalator equipment are: Moline, Illinois (3); McKinney, Texas; Philadelphia, Pennsylvania; Arkansas City, Kansas; Vancouver and Toronto, Canada.

The Eastern Canada division of Montgomery has served Eastern Canada for over 50 years. The Eastern Canada division has greatly expanded manufacturing capabilities to produce the full Montgomery line, including escalators and ESP Group Supervisory Control elevator systems.

The Western Canada division, established in 1919 in Vancouver, has always enjoyed a leading position in the elevator/escalator industry in Western Canada.

The Western Manufacturing Division has facilities in Arkansas City, Kansas, for the manufacture of elevator cars and entrances. Guilbert, Inc., Philadelphia, Pennsylvania, manufactures manual and power operated doors for freight elevators.



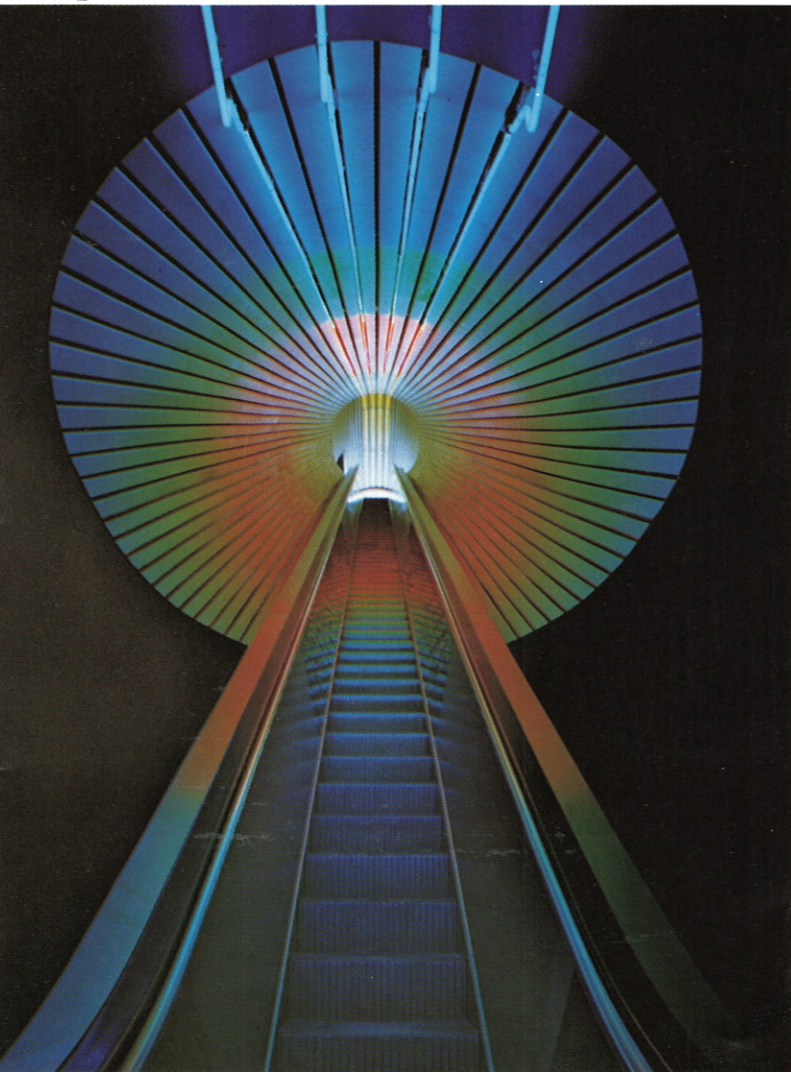
COVER Top Left	William B. Hartsfield-Atlanta International Airport, Atlanta, Georgia
Top Center & Right	Santa Clara Civic Center, San Jose, California
Bottom	Deere & Company Administrative Center, Moline, Illinois
Above & B	Walter Reed Hospital, Washington, D. C. 20 Montgomery elevators, 4 Montgomery dumbwaiters, 6 Montgomery carlifts.
A & D	The Gallery, Philadelphia, Pennsylvania. 12 Montgomery escalators, 2 Montgomery glass enclosed elevators.
C	Detroit Science Center, Detroit, Michigan. 2 Montgomery escalators, 1 Montgomery hydraulic passenger elevator.
E	Toronto Transit System, Toronto, Ontario. 136 Montgomery escalators, 2 Montgomery Power Walks.
F	Belk-Lindsey, Gainesville, Florida. 2 Montgomery escalators, 1 Montgomery hydraulic passenger elevator, 1 Montgomery hydraulic freight elevator.



A ▲



B ▲



montgomery[®] control systems

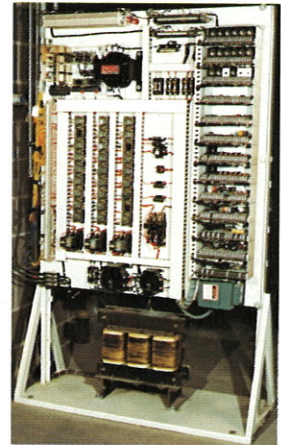
SSC-6010[®] solid state elevator power control

Montgomery SSC-6010 is a variable voltage elevator power control system that incorporates completely static control for adjustable speed, acceleration and deceleration, precise leveling accuracy and exceptionally smooth stops. Montgomery's SSC-6010 is designed for all traction elevators, geared and gearless, operating between speeds of 100-1500 fpm.

By eliminating the motor-generator set with its greater power consuming characteristics, the new Montgomery SSC-6010 solid state elevator power control system will reduce elevator power bills up to 30% per elevator. The secret is a transistor-like device called a thyristor which enables the Montgomery SSC-6010 to convert A.C. line power directly to controlled D.C. power.

The SSC-6010 offers many more benefits. By eliminating the motor-generator set, less machine room space is required and machine room loads are reduced. The entire system produces less heat which means longer equipment life and lower machine room ventilating and air conditioning requirements.

The Montgomery SSC-6010 adjusting section revolutionizes elevator adjusting, previously a tedious task consuming many man-hours. With SSC-6010, trained Montgomery technicians can quickly tune the system for most desirable performance by simply making potentiometer adjustments such as high speed, first slow down, leveling, field gain, acceleration slope, stability, response, speed gain, maximum current, etc. which achieve excellent long-term stability.

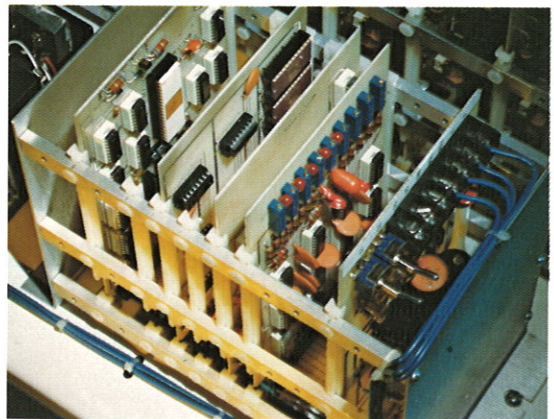


miprom[®] microprocessor elevator logic control

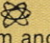
Montgomery MIPROM[®] is a microprocessor elevator logic control for the mass elevator market for low and medium-rise buildings using geared traction and oil hydraulic elevators as well as high-rise buildings having high speed gearless traction elevators.

Montgomery pioneered and developed MIPROM[®] for the mass market to offer a compact electronic elevator logic control having superior reliability, REPROGRAMMABLE FLEXIBILITY and ease of maintenance.

Montgomery MIPROM[®] consists of a standardized solid-state modular hardware package utilizing microprocessors to create an electronic brain which performs computer functions. The microprocessor correlates signals from the elevator and multiple programmable memories, then transmits logic instructions to the elevator.



ESP group supervisory control system

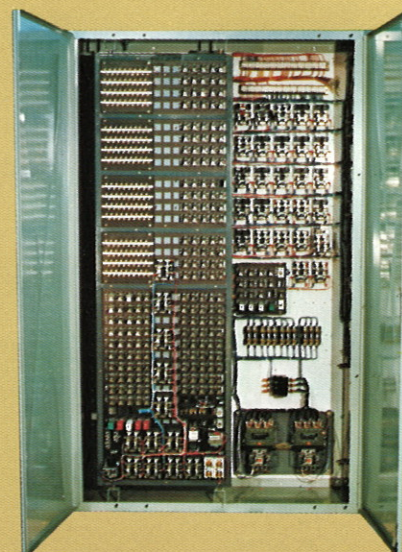
A Registered Trade Mark of the Montgomery Elevator Company, Montgomery's ESP  Group Supervisory Control with Measured Demand System and Electronic Sensor Programming is a highly sophisticated elevator control system. ESP anticipates each demand for service throughout the building and positions the elevators in the system for immediate response. ESP automatically adjusts to the constantly changing traffic demands, fully utilizing each elevator in the system, under every condition in the wide variation of traffic requirements from heavy incoming traffic to heavy outgoing traffic and to every possibility between these extremes.

ESP with ZS (Zones of Service) automatically parks the elevators within selected zones throughout the building during periods of light traffic demand. This system assures immediate response to any demand for service, with minimum car movement. ZS reduces power consumption and equipment wear by limiting car movement only to that necessary to service traffic demand.

The flexibility of ESP permits engineered adjustment to the precise requirements of each building. Montgomery engineers carefully determine these requirements and assemble the basic module of the ESP system to exactly match the traffic demand.

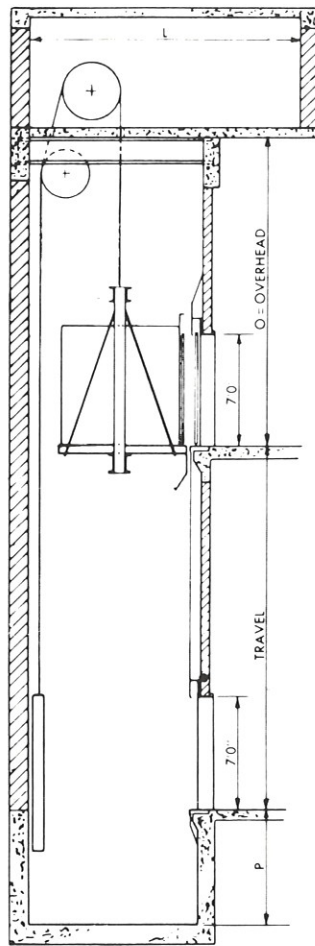
Montgomery's complete line of control equipment is well known for its reliability and ease of maintenance. Illustrated is a single module of control, integrating power and combination logic control functions. Built-in electrical selector eliminates a myriad of moving parts and associated maintenance problems. Plug-in control modules speed maintenance.

Whereas MIPROM[®] elevator logic control systems (see above) are modularly designed, mass produced and programmed (and reprogrammable), this hardwired control (illustrated at right) is custom engineered to precise building requirements. It ranges from slow, single speed elevator controls to complex systems. Control modules are utilized as required to provide efficient applications. Each control



receives a complete operational test in our factory before being installed by trained Montgomery technicians. Efficient and dependable elevator operation results.

passenger elevators



high speed traction

High-Speed Traction Elevators meet the need for high quality performance, with speeds to 1200 fpm. Heavy traffic demands are served by ESP Group Supervisory Control Systems.

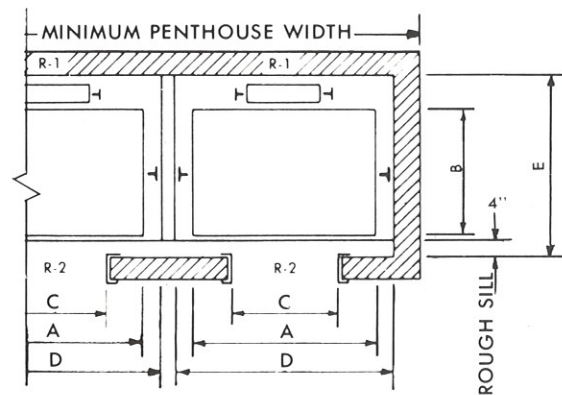
HANDICAPPED REQUIREMENTS AVAILABLE TO MEET NEII STANDARDS OR LOCAL CODES

National Elevator Industry, Inc. (NEII) Handicapped Standards are:

Placement of car controls, hall buttons and phone (or intercommunication equipment) for easy access.

Tactile markings for operating switches, buttons and hoistway door jams.

Handrails in car — dual ray door protection — audible signals in car position indicator and lanterns.



PLAN FOR ONE OR MORE ELEVATORS
CENTER OPENING DOORS SHOWN —
SINGLE SLIDE DOORS OPTIONAL

RECOMMENDED SIZES AND CAPACITIES

TYPE BUILDING	AVERAGE OFFICE HOTEL		LARGE OFFICE OR STORE				
CAPACITY	2500 #	3000 #	3500 #				
A	7'- 0"	7'-0"	7'-0"				
B	5'- 0"	5'-6"	6'-2"				
C	3'- 6"	3'-6"	3'-8"				
*D	8'- 4"	8'-4"	8'-4"				
*E	6'-10"	7'-4"	8'-0"				
MINIMUM PIT—OVERHEAD & MACHINE ROOM DIMENSIONS							
SPEED	400	500	600	700	800	1000	1200
L	26'-6"	26'-6"	26'-6"	26'-6"	27'- 6"	29'- 6"	31'-6"
O	17'-7"	18'-4"	19'-5"	21'-6"	21'-11"	25'- 6"	27'-0"
P	7'-4"	8'-8"	8'-11"	12'-6"	12'- 6"	12'-10"	15'-2"

NOTES:

- Reactions include allowances for impact but DO NOT include weight of concrete slab.
- Pit depths, overhead clearance and penthouse sizes are in accordance with ANSI code requirements. Local codes may vary these requirements.
- Layouts and dimensions shown are for center opening type entrances.
- Consult your Montgomery Representative for specific recommendations where space is limited or other conditions may necessitate further study.
- All data is general. Consult your local Montgomery Representative for exact information for your working drawings.

* D and E dimensions are for car travel up to 100'. Add 2" to D and E for each additional 100' of car travel.

OVERHEAD LOADS/LBS. APPROXIMATE PER ELEVATOR

CAPACITY	SPEED	R-1	R-2
2500#	400	28800	15800
	500	29900	16800
	600	32200	18900
	700	33400	20000
	800	34500	21000
	1000	35700	22100
3000#	1200	36800	23100
	400	29900	15800
	500	31100	16800
	600	33400	18900
	700	34500	20000
	800	35700	21000
3500#	1000	36800	22100
	1200	38000	23100
	400	34500	22100
	500	36800	23100
	600	39100	24700
	700	41400	26300
	800	44900	28900
	1000	48300	30500
	1200	50600	31500

montgomery[®] passenger elevators

medium and low speed traction

Medium and Low Speed Traction Elevators perform efficiently and economically when serving traffic demands in medium and low rise buildings.

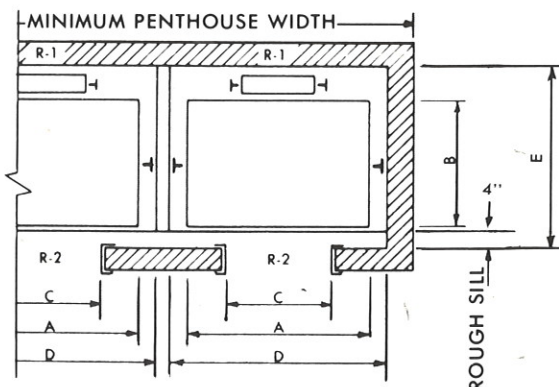
HANDICAPPED REQUIREMENTS AVAILABLE TO MEET NEII STANDARDS OR LOCAL CODES

National Elevator Industry, Inc. (NEII) Handicapped Standards are:

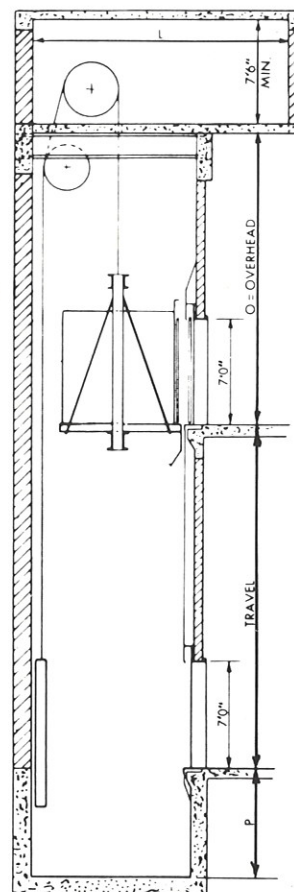
Placement of car controls, hall buttons and phone (or intercommunication equipment) for easy access.

Tactile markings for operating switches, buttons and hoistway door jambs.

Handrails in car — dual ray door protection — audible signals in car position indicator and lanterns.



PLAN FOR ONE OR MORE ELEVATORS
CENTER OPENING DOORS SHOWN —
SINGLE SLIDE DOORS OPTIONAL



RECOMMENDED SIZES AND CAPACITIES

TYPE BUILDING	SMALL APART-MENT	SMALL OFFICE	AVERAGE OFFICE HOTEL		LARGE OFFICE OR STORE
CAPACITY	1500#	2000#	2500#	3000#	3500#
A	4'-10"	6'-0"	7'-0"	7'-0"	7'-0"
B	5'-0"	5'-0"	5'-0"	5'-6"	6'-2"
C	2'-8"	3'-0"	3'-6"	3'-6"	3'-6"
D	6'-2"	7'-4"	8'-4"	8'-4"	8'-4"
E	6'-10"	6'-10"	6'-10"	7'-4"	8'-0"

MINIMUM PIT - OVERHEAD & MACHINE ROOM DIMENSIONS

SPEED	100	200	250	300	350	400
L	16'-0"	16'-0"	16'-0"	17'-0"	17'-0"	21'-6"
O	15'-6"	15'-9"	16'-2"	16'-4"	16'-6"	17'-7"
*P (a)	4'-0"	-	-	-	-	-
*P (b)	-	4'-0"	4'-6"	4'-6"	5'-1"	5'-7"
*P (c)	-	5'-8"	6'-0"	6'-6"	6'-11"	7'-4"

*P (a) indicates minimum pit required for elevators with type "A" safety.
*P (b) indicates minimum pit required for elevators with type "B" safety.
*P (c) indicates minimum pit required for elevators with type "C" safety.

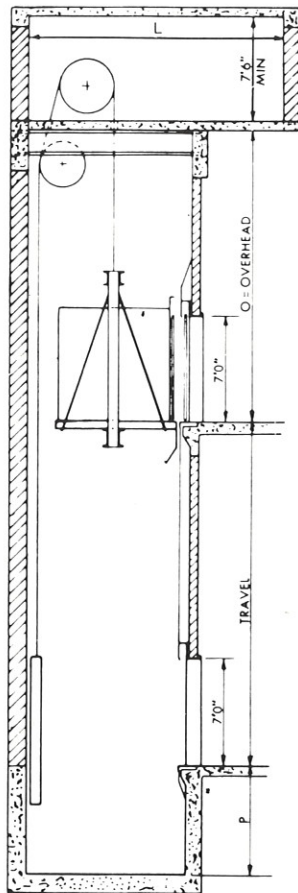
NOTES:

- Reactions include allowances for impact but DO NOT include weight of concrete slab.
- Pit depths, overhead clearance and penthouse sizes are in accordance with ANSI code requirements. Local codes may vary these requirements.
- Layouts and dimensions shown are for center opening type entrances.
- Consult your Montgomery Representative for specific recommendations where space is limited or other conditions may necessitate further study.
- All data is general. Consult your local Montgomery Representative for exact information for your working drawings.

OVERHEAD LOAD/LBS. APPROXIMATE PER ELEVATOR

CAPACITY	SPEED	R-1	R-2
1500#	100	13800	7900
2000#	100	14400	9300
	200	17500	10400
	250	17900	11400
	300	18200	11600
	350	22800	12600
2500#	400	27600	15300
	100	17200	10900
	200	19300	12100
	250	19800	13000
	300	20200	13200
3000#	350	23500	13500
	400	28800	15600
	100	19700	12800
	200	22400	12900
	250	22800	13300
3500#	300	23300	13900
	350	23500	14000
	400	30500	16800
	100	21100	14000
	200	24200	14900
3500#	250	24500	15200
	300	25100	15500
	350	29000	15900
400	32200	17700	

passenger elevators



SPM[®] standard pre-manufactured traction elevators

SPM elevators perform efficiently and economically when serving traffic demands in medium and low rise buildings. Standard pre-manufacturing by Montgomery means lower cost to the owner, faster delivery and installation while maintaining "custom" quality.

SPM elevators have capacities of 2500 pounds and 3000 pounds and offer speeds of 200 or 350 fpm. They have center opening doors (single slide doors optional) and are furnished in single or multiple car operation up to 4 car group. Flexibility is offered in entrance and fixture selection, and optional decor and finishes.

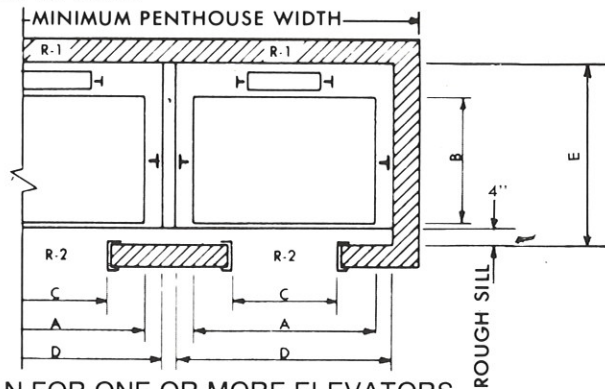
HANDICAPPED REQUIREMENTS AVAILABLE TO MEET NEII STANDARDS OR LOCAL CODES

National Elevator Industry, Inc. (NEII) Handicapped Standards are:

Placement of car controls, hall buttons and phone (or intercommunication equipment) for easy access.

Tactile markings for operating switches, buttons and hoistway door jams.

Handrails in car — dual ray door protection — audible signals in car position indicator and lanterns.



PLAN FOR ONE OR MORE ELEVATORS
CENTER OPENING DOORS SHOWN — SINGLE SLIDE DOORS OPTIONAL

NOTES:

1. Reactions include allowances for impact but DO NOT include weight or concrete slab.
2. Pit depths, overhead clearance and penthouse sizes are in accordance with ANSI code requirements. Local codes may vary these requirements.
3. Layouts and dimensions shown are for center opening type entrances.
4. Consult your Montgomery Representative for specific recommendations where space is limited or other conditions may necessitate further study.
5. All data is general. Consult your local Montgomery Representative for exact information for your working drawings.
6. For complete details ask for Montgomery brochure SF2056.

CAPACITY (POUNDS)		2500#		3000#	
SPEED (FPM)		200	350	200	350
DIMENSIONS					
Plan View	A	7'- 0"	7'- 0"	7'- 0"	7'- 0"
	B	5'- 0"	5'- 0"	5'- 6"	5'- 6"
	C	3'- 6"	3'- 6"	3'- 6"	3'- 6"
	D	8'- 4"	8'- 4"	8'- 4"	8'- 4"
	E	6'- 7"	6'- 7"	7'- 1"	7'- 1"
Minimum Machine Room	L	13'- 8"	13'- 8"	14'- 2"	14'- 2"
Minimum Overhead	O	15'- 4"	16'- 0"	15'- 4"	16'- 0"
Minimum Pit	P	3'-10"	4'-10"	3'-10"	4'-10"
OVERHEAD LOADS (POUNDS)					
Approximate	R1	22,000	22,000	26,000	26,000
Per Elevator	R2	11,500	11,500	12,000	12,000

montgomery® passenger elevators

basement traction — medium and low speed

Basement traction elevators are utilized for limited overhead conditions in new and existing buildings. This type of elevator facilitates future floor expansion.

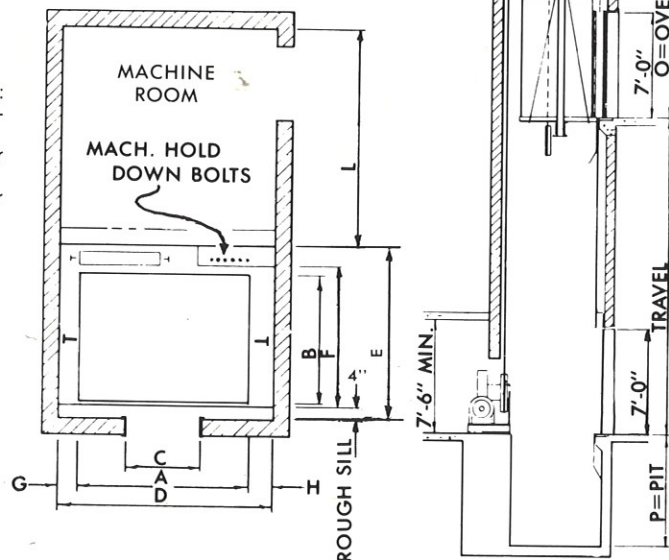
HANDICAPPED REQUIREMENTS AVAILABLE TO MEET NEII STANDARDS OR LOCAL CODE

National Elevator Industry, Inc. (NEII) Handicapped Standards are: Placement of car controls, hall buttons and phone (or intercommunication equipment) for easy access.

Tactile markings for operating switches, buttons and hoistway door jambs.

Handrails in car — dual ray door protection — audible signals in car position indicator and lanterns.

Machine room may be placed at side of elevator hoistway if dimension "D" is increased 4".



PLAN FOR ONE OR MORE ELEVATORS CENTER OPENING DOORS SHOWN — SINGLE SLIDE DOORS OPTIONAL

1:1 ROPING ARRANGEMENT

is used when only moderate overhead clearance is available, and only when a shallow pit depth is feasible.

RECOMMENDED SIZES & CAPACITIES

TYPE BUILDING	APARTMENT OR SMALL OFFICE	AVERAGE OFFICE HOTEL			LARGE OFFICE OR STORE
CAPACITY	2000#	2500#	3000#	3500#	
A	6'-0"	7'-0"	7'-0"	7'-0"	7'-0"
B	5'-0"	5'-0"	5'-6"	6'-2"	6'-2"
C	3'-0"	3'-6"	3'-6"	3'-6"	3'-6"
D	7'-10"	8'-4"	8'-4"	8'-4"	8'-4"
E	6'-10"	6'-10"	7'-4"	8'-0"	8'-0"
F	5'-5"	5'-5"	5'-11"	6'-7"	6'-7"
G	8"	8"	8"	8"	8"
H	8"	8"	8"	8"	8"

RECOMMENDED MACHINE ROOM OVERHEAD & PIT DIMENSIONS

SPEED	100	200	250	300	350
L	9'-6"	12'-0"	12'-0"	12'-0"	12'-0"
*O	16'-7"	17'-1"	17'-5"	17'-6"	17'-9"
**P(a)	4'-0"	-	-	-	-
**P(b)	-	4'-0"	4'-6"	4'-6"	5'-1"
**P(c)	-	5'-8"	6'-0"	6'-6"	6'-11"

- **P(a) indicates minimum pit required for elevators with type "A" safety.
 **P(b) indicates minimum pit required for elevators with type "B" safety.
 **P(c) indicates minimum pit required for elevators with type "C" safety.

NOTES:

- Pit depths, overhead clearance and penthouse sizes are in accordance with ANSI code requirements. Local codes may vary these requirements.
- Layouts and dimensions shown are for center opening type entrances.

2:1 ROPING ARRANGEMENT

permits a minimum overhead installation. Because of the sheave arrangement, it is necessary to have a greater pit depth than for a comparable 1:1 installation.

RECOMMENDED SIZES & CAPACITIES

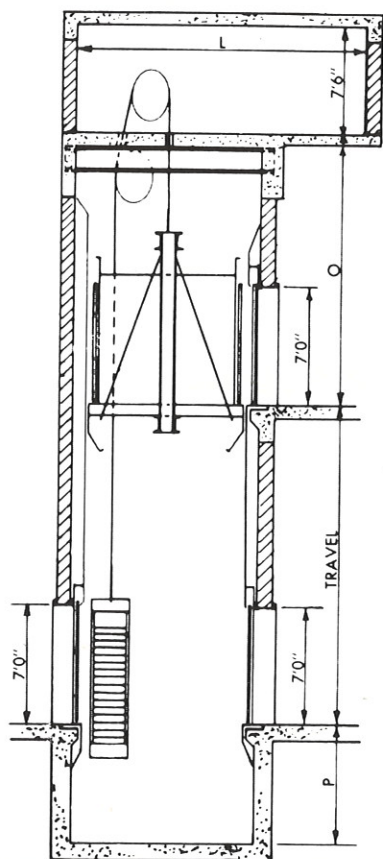
TYPE BUILDING	APARTMENT OR SMALL OFFICE	AVERAGE OFFICE HOTEL	
CAPACITY	2000#	2500#	3000#
A	6'-0"	7'-0"	7'-0"
B	5'-0"	5'-0"	5'-6"
C	3'-0"	3'-6"	3'-6"
D	7'-10"	8'-10"	8'-10"
E	6'-10"	6'-10"	7'-4"
F	5'-5"	5'-5"	5'-11"
G	10"	10"	10"
H	12"	12"	12"

RECOMMENDED MACHINE ROOM OVERHEAD & PIT DIMENSIONS

SPEED	100	200	250	300
L	13'-0"	15'-6"	15'-6"	15'-6"
O	13'-0"	13'-2"	13'-7"	13'-8"
P	5'-6"	6'-6"	6'-11"	7'-4"

- Consult your Montgomery Representative for specific recommendations where space is limited or other conditions may necessitate further study.
- The overhead dimension can be reduced 1'-0" if the cab selected is kept to a minimum height.
- All data is general. Consult your local Montgomery Representative for exact information for your working drawings.

passenger elevators



hospital traction

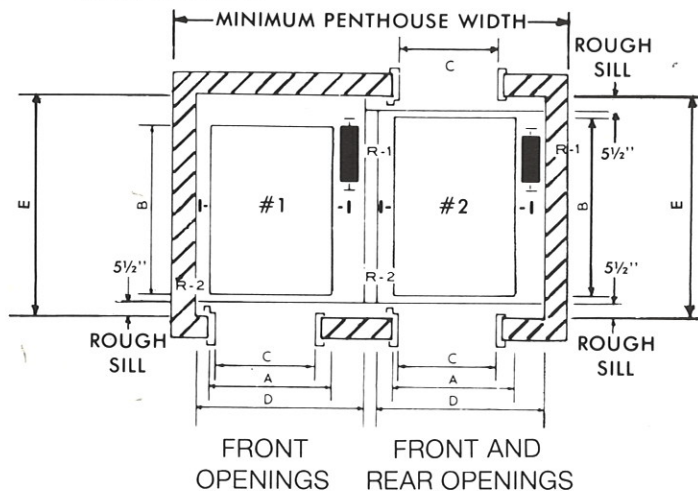
Hospital Traction Elevators are designed in a wide range of speeds for individual applications. Emergency and independent service as well as auxiliary power features are available.

HANDICAPPED REQUIREMENTS AVAILABLE TO MEET NEII STANDARDS OR LOCAL CODES

National Elevator Industry, Inc. (NEII) Handicapped Standards are:
Placement of car controls, hall buttons and phone (or intercommunication equipment) for easy access.

Tactile markings for operating switches, buttons and hoistway door jams.

Handrails in car — dual ray door protection — audible signals in car position indicator and lanterns.



RECOMMENDED SIZES & CAPACITIES

CAPACITY	3500#		4000#		5000#	
	#1	#2	#1	#2	#1	#2
A	5'-4"	5'-4"	5'-8"	5'-8"	6'-4"	6'-4"
B	8'-4"	8'-9½"	8'-8"	9'-1½"	8'-10"	9'-3½"
C	3'-8"	3'-8"	4'-0"	4'-0"	4'-6"	4'-6"
D	7'-5"	7'-5"	7'-9"	7'-9"	8'-5"	8'-5"
E	9'-3"	10'-1"	9'-7"	10'-5"	9'-9"	10'-7"

MINIMUM PIT, OVERHEAD AND MACHINE ROOM DIMENSIONS

SPEED	75	100	200	350	500
L	21'-0"	21'-0"	21'-0"	21'-0"	27'-6"
O	15'-6"	15'-6"	15'-9"	16'-6"	17'-7"
*P (a)	4'-0"	4'-0"	-	-	-
*P (b)	-	-	4'-0"	5'-1"	6'-7"
*P (c)	-	-	5'-8"	6'-11"	8'-10"

*P (a) indicates minimum pit required for elevators with type "A" safety.

*P (b) indicates minimum pit required for elevators with type "B" safety.

*P (c) indicates minimum pit required for elevators with type "C" safety.

APPROXIMATE OVERHEAD LOADS IN LBS. PER PASSENGER ELEVATOR

CAPACITY	SPEED	R-1	R-2
3500#	75	22200	14400
	100	22500	14700
	200	26500	15800
	350	31600	16800
	500	38000	24200
4000#	75	23700	15600
	100	24100	16000
	200	27500	16600
	350	32100	18600
	500	39100	25200
5000#	200	29500	18200
	350	34000	20600
	500	40500	27300

NOTES:

1. Reactions include allowances for impact but DO NOT include weight of concrete slab.
2. Pit depths, overhead clearance and penthouse sizes are in accordance with ANSI code requirements. Local codes may vary these requirements.
3. Layouts and dimensions shown are for two speed type entrances.
4. Consult your Montgomery Representative for specific recommendations where space is limited or other conditions may necessitate further study.
5. All data is general. Consult your local Montgomery Representative for exact information for your working drawings.

montgomery® passenger elevators

oil hydraulic

Oil Hydraulic Elevators are designed to meet varying performance requirements with car speeds to 200 feet per minute and maximum travel to 70 feet. They are easily adapted to most low rise buildings and frequently produce economic advantages over hoist rope traction elevators.

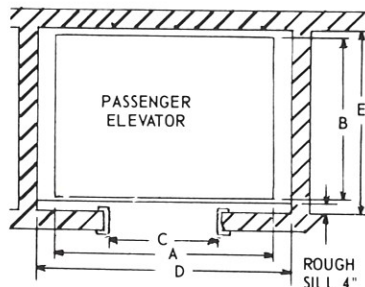
HANDICAPPED REQUIREMENTS AVAILABLE TO MEET NEII STANDARDS OR LOCAL CODES

National Elevator Industry, Inc. (NEII) Handicapped Standards are:

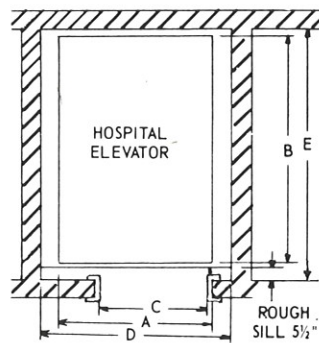
Placement of car controls, hall buttons and phone (or intercommunication equipment) for easy access.

Tactile markings for operating switches, buttons and hoistway door jams.

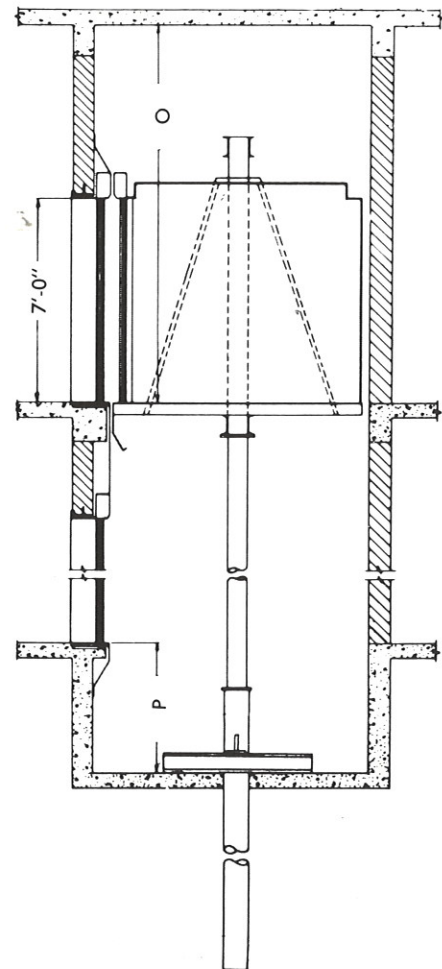
Handrails in car — dual ray door protection — audible signals in car position indicator and lanterns.



CENTER OPENING DOORS SHOWN —
SINGLE SLIDE DOORS OPTIONAL



TWO SPEED DOORS SHOWN



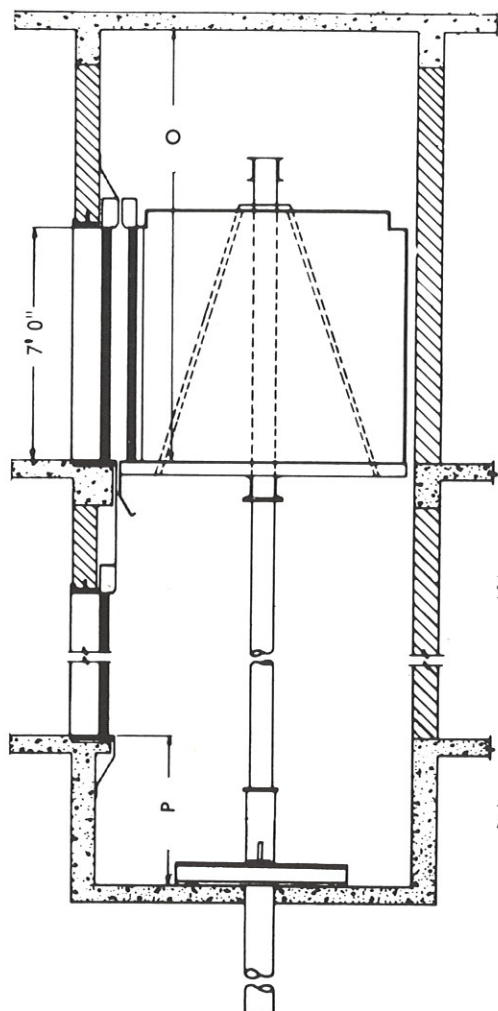
FOR OFFICE BUILDINGS, HOTELS, MOTELS APARTMENTS, BANKS, STORES, LIBRARIES, ETC.						HOSPITALS AND INSTITUTIONS		1 - Single Entrance 2 - Double Entrance				
CAPACITY	1500#	2000#	2500#	3000#	3500#	CAPACITY	3500#		4000#		5000#	
							1	2	1	2	1	2
A	4'-10"	6'-0"	7'-0"	7'-0"	8'-0"	A	5'-4"	5'-4"	5'-8"	5'-8"	6'- 4"	6'-4"
B	5'- 0"	5'-0"	5'-0"	5'-6"	5'-6"	B	8'-4"	8'-9½"	8'-8"	9'-1½"	8'-10"	9'-3½"
C	2'- 8"	3'-0"	3'-6"	3'-6"	4'-0"	C	3'-8"	3'-8"	4'-0"	4'-0"	4'- 6"	4'-6"
D	6'- 8"	7'-4"	8'-4"	8'-4"	9'-4"	D	6'-9"	6'-9"	7'-3"	7'-3"	8'- 0"	8'-0"
E	5'- 9"	5'-9"	5'-9"	6'-3"	6'-3"	E	9'-3"	9'-8"	9'-7"	10'-0"	9'- 9"	10'-2"
O	13'- 0"	13'-0"	13'-0"	13'-0"	13'-0"	O	13'-0"	13'-0"	13'-0"	13'-0"	13'- 0"	13'-0"
P	4'- 0"	4'-0"	4'-0"	4'-0"	4'-0"	P	4'-0"	4'-0"	4'-0"	4'-0"	4'- 0"	4'-0"

NOTES:

1. A legal machine room meeting Code requirements and ventilated with temperature maintained between 65° and 100°F, must be provided. Machine room location preferably should be at the lowest landing adjacent to the hoistway. Machine room size varies depending on capacity and speed of elevator. Consult your Montgomery Representative for the exact size.
2. Pit depths, and overhead clearances are in accordance with ANSI code requirements. Local codes may vary these requirements.
3. Layout and dimensions shown for passenger elevators based on center opening type entrances and for hospital elevators based on two speed type entrances.

4. Consult your local Montgomery Office for more information regarding Notes 1 and 2.
5. All data is general. Consult your local Montgomery Representative for exact information for your working drawings.

passenger elevators

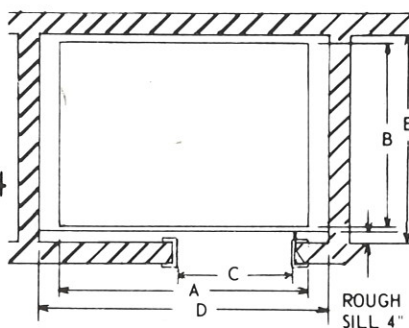


spm[®] standard pre-manufactured oil hydraulic

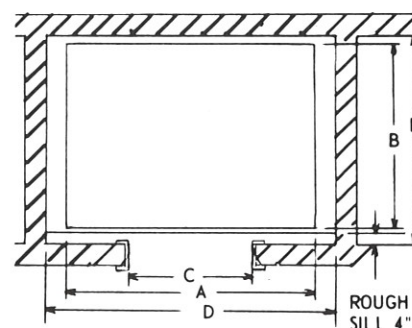
SPM Oil Hydraulic Elevators meet Montgomery's high standards of quality. STANDARD equipment is PRE-MANUFACTURED in three sizes, with the advantages of quick delivery, low cost and reliable service. SPM's offer travel to five floors, car speeds to 125 fpm, flexibility in entrance and fixture selection, and optional decor and finishes. Selective collective operation is standard for SPM elevators.

HANDICAPPED REQUIREMENTS AVAILABLE TO MEET NEII STANDARDS OR LOCAL CODES

National Elevator Industry, Inc. (NEII) Handicapped Standards are:
 Placement of car controls, hall buttons and phone (or intercommunication equipment) for easy access.
 Tactile markings for operating switches, buttons and hoistway door jams.
 Handrails in car — dual ray door protection — audible signals in car position indicator and lanterns.



PLAN A
PASSENGER ELEVATOR
WITH SINGLE
SLIDE ENTRANCES



PLAN B
PASSENGER ELEVATOR
WITH CENTER
OPENING ENTRANCES

OFFICE BUILDINGS, HOTELS, APARTMENTS, ETC.

HOISTWAY	SPM-1500	SPM-2000	SPM-2500
DIMENSIONS	CAP 1500#	CAP 2000#	CAP 2500#
A	4'-10"	6'-0"	7'-0"
B	5'-0"	5'-0"	5'-0"
C	2'-8"	3'-0"	3'-6"
D	6'-8"	7'-4"	8'-4"
E	5'-9"	5'-9"	5'-9"
O	13'-0"	13'-0"	13'-0"
P	4'-0"	4'-0"	4'-0"

NOTES:

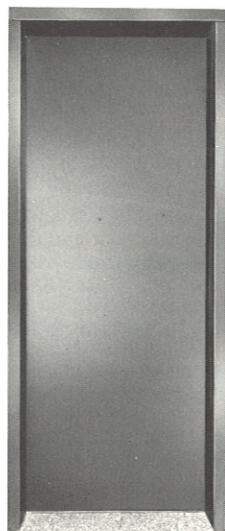
1. A legal machine room meeting Code requirements and ventilated with temperature maintained between 65° and 100°F, must be provided. Machine room location preferably should be at the lowest landing adjacent to the hoistway. Machine room minimum size must be 5'-3" by 8'-4" clear with clear height of 7'-6". A larger area is required for two or more elevators having a common machine room. Consult your Montgomery Representative for the exact size.
2. Pit depth and overhead clearance are in accordance with ANSI code requirements. Local codes may vary these requirements.
3. Consult your local Montgomery Office for more information regarding Notes 1 and 2.
4. All data is general. Consult your local Montgomery Representative for exact information for your working drawing.
5. For complete details ask your local Montgomery Office for SPM brochure SF2043.

ENTRANCE ARRANGEMENT	SPM-1500	SPM-2000	SPM-2500
PLAN	A	A or B	A or B

montgomery[®] entrances

Montgomery standard entrances shown are available in a wide range of finishes and materials. Custom entrances are also available. Contact your local Montgomery representative for details.

single speed slide



FEATURES — Maximum opening width approximately $\frac{1}{2}$ width of car. Opening width should not exceed 3'-6". Provides a sliding door at moderate cost.

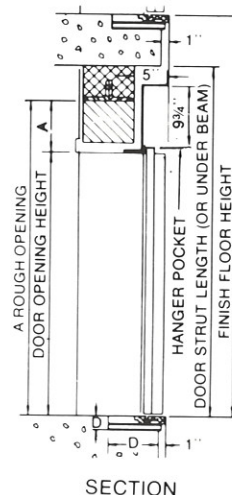
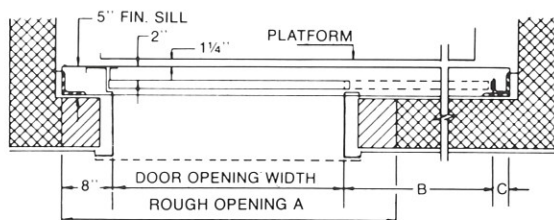
DIMENSION KEY — Wherever possible, front hoistway walls should not be erected until after door equipment is installed.

A - Rough openings for standard Unit-type frames to be: Width of door opening plus 8" on each side. Height of door opening plus 8" above.

B - Landing door opening plus $1\frac{1}{2}$ ".

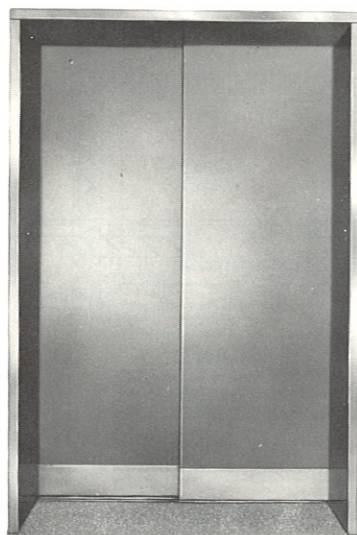
C - 5" for power operated doors.

D - 2" x 8" sill pocket entire width of hatch.



SECTION

two speed slide



FEATURES — Door opening approximately $\frac{2}{3}$ width of car.

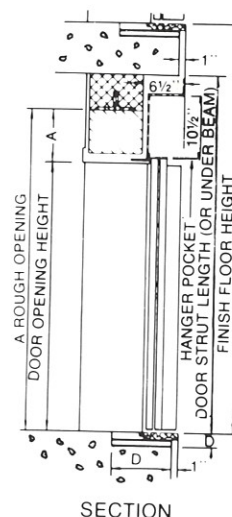
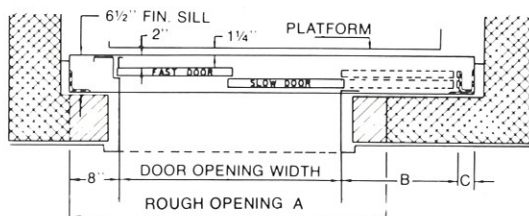
DIMENSION KEY — Wherever possible, front hoistway walls should not be erected until after door equipment is installed.

A - Rough openings for standard Unit-type frames to be: Width of door opening plus 8" on each side. Height of door opening plus 8" above.

B - $\frac{1}{2}$ landing door opening plus $1\frac{1}{8}$ ".

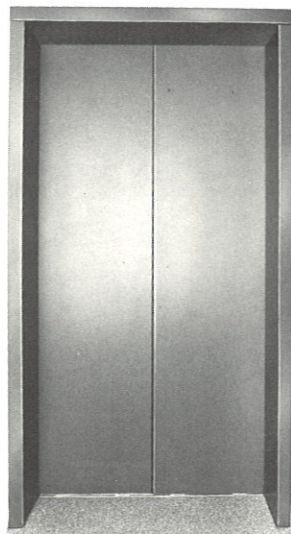
C - 5" for power operated door.

D - 2" x $9\frac{1}{2}$ " sill pocket entire width of hatch.



SECTION

center opening slide



FEATURES — Provides opening approximately $\frac{1}{2}$ width of car. Simultaneous opening of each door panel, at equal speed, reduces opening time to $\frac{1}{2}$ that required for other types of sliding doors.

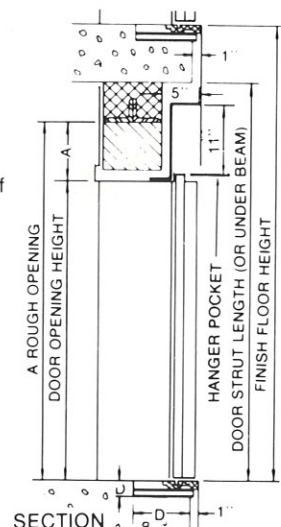
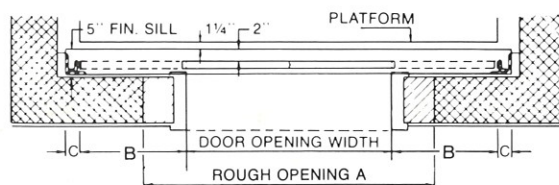
DIMENSION KEY — Wherever possible, front hoistway walls should not be erected until after door equipment is installed.

A - Rough openings for standard Unit-type frames to be: Width of door opening plus 8" on each side. Height of door opening plus 8" above.

B - $\frac{1}{2}$ landing door opening plus $\frac{3}{4}$ ".

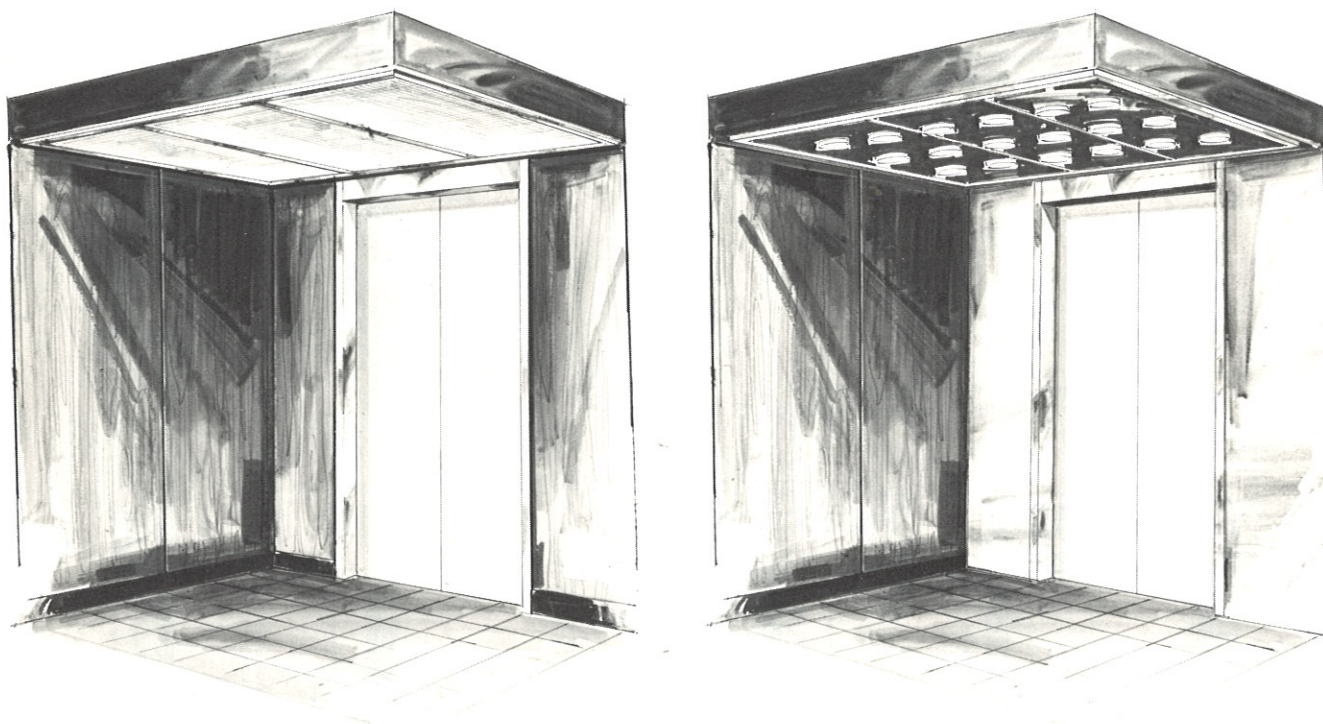
C - 5" for power operated doors.

D - 2" x 8" sill pocket entire width of hatch.



SECTION

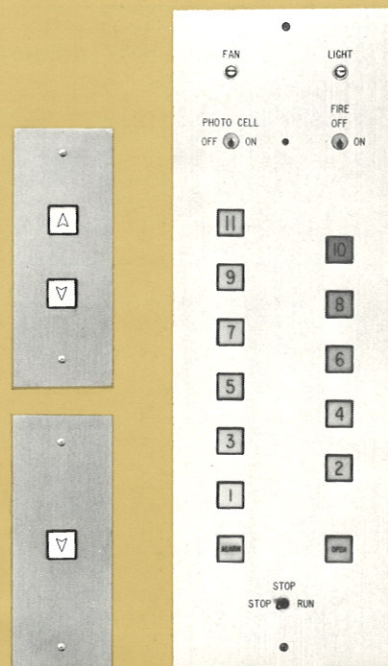
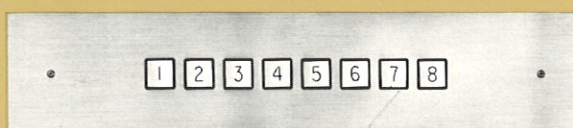
cars, signals and pushbutton fixtures



Montgomery standard cars are shown. Other standard cars as well as custom cars are available in a wide range of designs and materials. Contact your local Montgomery representative for details.

signal and pushbutton fixtures

Montgomery standard signal and pushbutton fixtures shown feature cover plates of stainless steel. Custom fixtures are also available. Contact your local Montgomery representative for details.

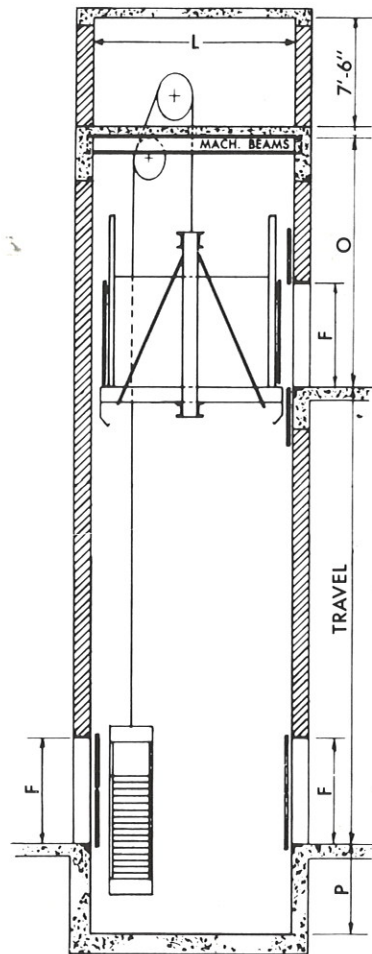
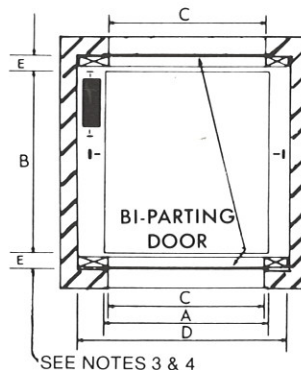
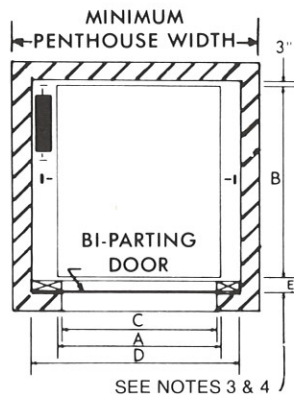


montgomery[®] freight elevators

traction

Traction Freight Elevators meet and exceed the heavy duty requirements of freight type loading. Special applications are available to meet unusual and hazardous conditions. As an optional feature we recommend our Lodemaster, an automatic load weighing device, which warns against overloading. Also recommended are power operated hoist-way doors and car gates for medium and heavy duty installations.

For freight door details see page 18



LIGHT AND MEDIUM DUTY FREIGHT ELEVATORS

CAPACITY	2500#	3000#	4000#	6000#	8000#	10,000#
A	5'-4"	6'-4"	6'-4"	8'-4"	8'-4"	10'-4"
B	7'-0"	8'-0"	8'-0"	10'-0"	10'-0"	14'-0"
C	5'-0"	6'-0"	6'-0"	8'-0"	8'-0"	10'-0"
D	7'-4"	8'-4"	8'-4"	10'-4"	10'-10"	12'-10"
L	13'-0"	14'-0"	14'-0"	14'-0"	14'-0"	15'-0"

HEAVY DUTY POWER TRUCK FREIGHT ELEVATORS

CAPACITY	10,000#	12,000#	16,000#	18,000#	20,000#
A	8'-4"	10'-4"	10'-4"	10'-4"	12'-4"
B	12'-0"	14'-0"	14'-0"	16'-0"	20'-4"
C	8'-0"	10'-0"	10'-0"	10'-0"	12'-0"
D	11'-4"	13'-6"	14'-0"	14'-2"	16'-6"
L	14'-0"	15'-0"	15'-0"	17'-0"	21'-0"

MINIMUM PIT & OVERHEAD DIMENSIONS
FOR LIGHT & MEDIUM DUTY FREIGHT ELEVATORS

CAR SPEED	50	75	100	200
O	16'-0"	16'-0"	16'-0"	16'-0"
P	5'-6"	5'-6"	5'-6"	6'-0"

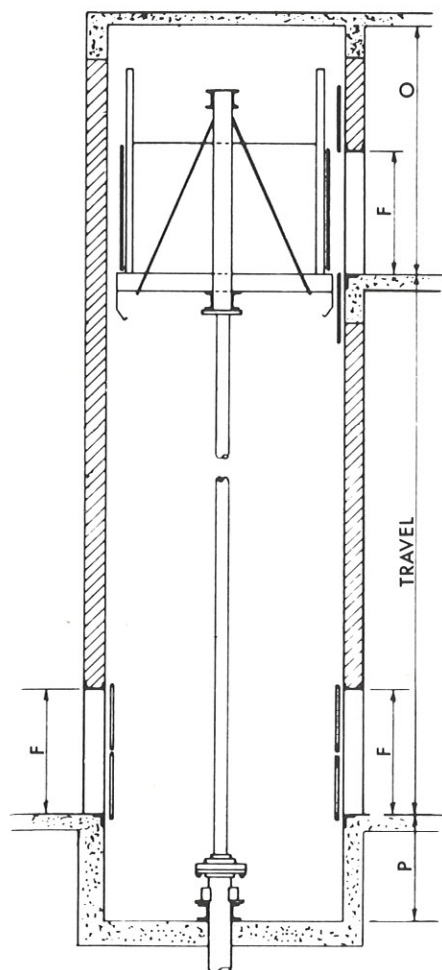
For minimum pit and overhead dimensions for heavy duty power truck freight elevators consult your Montgomery representative.

NOTES:

1. Pit depths, overhead clearance and penthouse sizes are in accordance with ANSI code requirements. Local codes may vary these requirements.
2. For capacities over 20,000 lbs. or speeds over 200 f.p.m., consult your Montgomery Representative.
3. Dimensions E = 5" for regular type counter balanced hoistway doors and 6 3/4" for pass type counter balanced hoistway doors.
4. Pass type hoistway doors are required when floor heights are less than 11'-0" for 7'-0" openings and less than 14'-0" for 9'-0" openings. See chart on page 18 for other door sizes.
5. Dimension F = 7'-0" on light and medium duty; 8'-0" or as required for heavy duty doors. Doors higher than 8'-0" require additional overhead height.
6. For large heavy duty doors consult your Montgomery Representative.
7. All data is general. Consult your local Montgomery Representative for exact information for your working drawings.

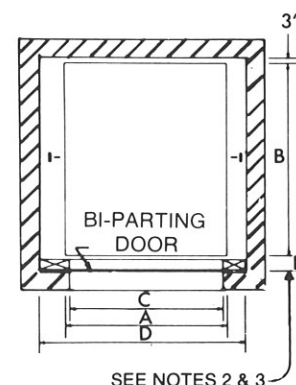
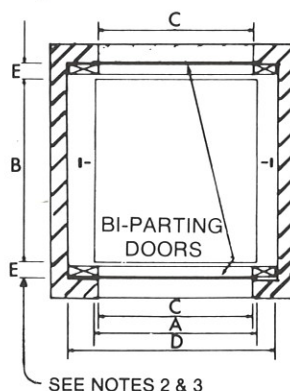
freight elevators

oil hydraulic



Oil Hydraulic Freight Elevators are recommended for nominal speed and travel requirements. Features of this type elevator include minimum shaft clearances, economical design of the hoistway, and elimination of the overhead machine room. The recommended machine room location is at the lowest landing adjacent to the hoistway, but can be located in a semi-remote area from the hoistway.

For freight door information see page 18



LIGHT AND MEDIUM DUTY HYDRAULIC FREIGHT ELEVATORS							
CAPACITY	2000 #	3000 #	4000 #	5000 #	6000 #	7500 #	10,000 #
A	5'-0"	5'-6"	6'-6"	8'-6"	8'-6"	8'-6"	10'-6"
B	6'-0"	7'-0"	8'-0"	10'-0"	12'-0"	12'-0"	14'-0"
C	4'-8"	5'-2"	6'-2"	8'-2"	8'-2"	8'-2"	10'-2"
D-manual doors	6'-4"	6'-10"	7'-10"	9'-10"	10'-0"	10'-6"	12'-6"
D-power doors	6'-10"	7'-4"	8'-4"	10'-4"	10'-6"	10'-6"	12'-6"
O-7'-0" high doors	13'-2"	13'-2"	13'-2"	13'-2"	13'-2"	13'-2"	13'-2"
O-8'-0" high doors	14'-2"	14'-2"	14'-2"	14'-2"	14'-2"	14'-2"	14'-2"
P	4'-6"	4'-6"	4'-6"	4'-6"	4'-6"	5'-0"	5'-0"

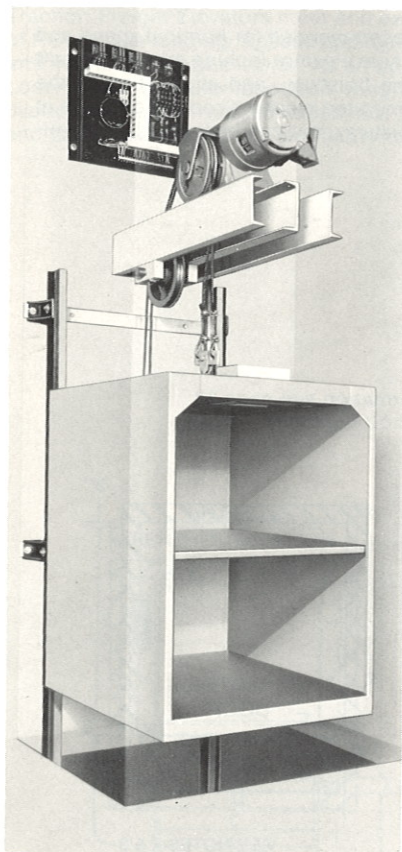
- NOTES:
- Dimensions O and P are based on car speeds up to 150 fpm.
 - Dimension E = 5" for regular type counter balanced hoistway doors and 6 3/4" for pass type counter balanced hoistway doors.
 - Pass type hoistway doors are required when floor heights are less than 11'-0" for 7'-0" openings and less than 14'-0" for 9'-0" openings. See chart on page 18 for other door sizes.
 - Dimension F = 7'-0" on light and medium duty, 8'-0" or as required for heavy duty.
 - A legal machine room meeting Code requirements and ventilated with temperature maintained between 65° and 100°F, must be provided. Machine room location preferably should be at the lowest landing adjacent to the hoistway. Machine room size varies depending on capacity and speed of elevator. Consult your Montgomery Representative for the exact size.

HEAVY DUTY POWER TRUCK HYDRAULIC FREIGHT ELEVATORS					
CAPACITY	10,000 #	12,000 #	16,000 #	18,000 #	20,000 #
A	10'-6"	10'-6"	10'-6"	10'-6"	12'-6"
B	14'-0"	14'-0"	16'-0"	16'-0"	20'-0"
C	10'-2"	10'-2"	10'-2"	10'-2"	12'-2"
D-manual doors	12'-6"	12'-6"	12'-6"	12'-6"	14'-6"
D-power doors	12'-6"	12'-6"	12'-6"	12'-6"	14'-6"
O-7'-0" high doors	13'-2"	13'-2"	13'-2"	13'-2"	13'-2"
O-8'-0" high doors	14'-2"	14'-2"	14'-2"	14'-2"	14'-2"
P	6'-0"	6'-0"	6'-0"	6'-0"	6'-0"

- Pit depths, and overhead clearances are in accordance with ANSI code requirements. Local codes may vary these requirements.
- Layout and dimensions shown for freight elevators based on bi-parting counter-balanced type hoistway doors.
- Consult your local Montgomery Office for more information regarding Notes 5 and 6.
- For capacities over 20,000 lbs. and for large heavy duty doors, consult your Montgomery Representative.
- All data is general. Consult your Montgomery Representative for exact information for your working drawings.

montgomery[®] dumbwaiters

traction drive

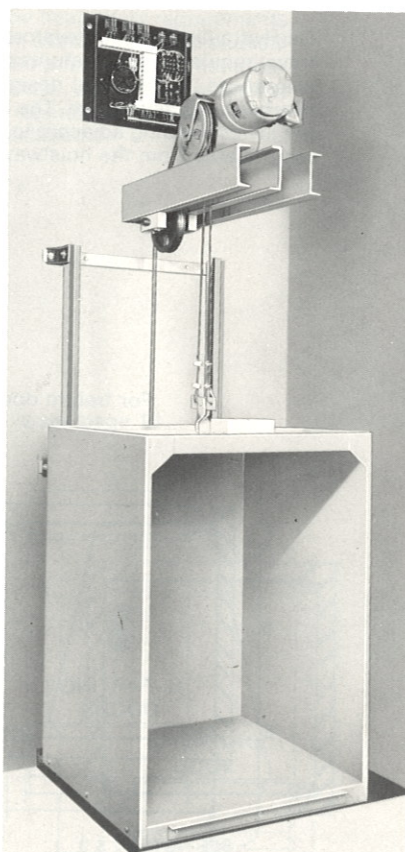


high speed traction drive

Model 1401 has machine above and Model 1402 has machine below. Designed to take hard use for all high rise projects, these models are top of the line with car speeds from 100 to 150 FPM (and above on request). Capacities from 200 to 500 pounds. Standard operation is automatic call-send.

moderate speed traction drive

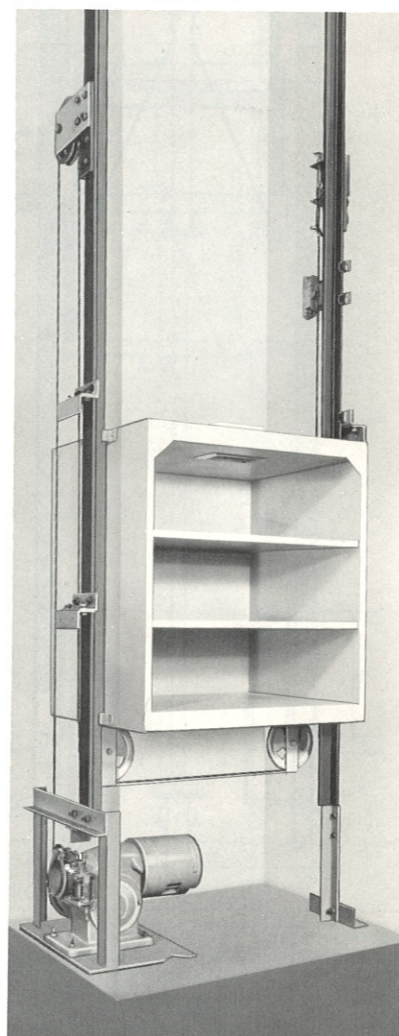
Model 1431 has machine above and Model 1432 has machine below. Satisfies economical speed requirements for 2 to 6 landing projects such as restaurants, apartments, hospitals, hotels, motels, institutions, banks, office buildings. Heavy duty guide rail columns support machine and transmit down load weight to bottom of hoistway. Lifting capacities from 75 pounds to 500 pounds and the car speed is 50 FPM. Standard operation is automatic call-send.



heavy duty traction drive

Model 1405 has machine above and Model 1406 has machine below adjacent to hoistway. Designed for heavy duty wheeled truck loading. A substitute for small cargo elevators in commercial buildings, industrial buildings, research buildings, piers, warehouses, libraries, dormitory buildings. Lifting capacity up to 500 pounds and car speeds from 50 FPM to 150 FPM. Standard operation is automatic call-send.

electric drum drive



moderate speed electric drum drive

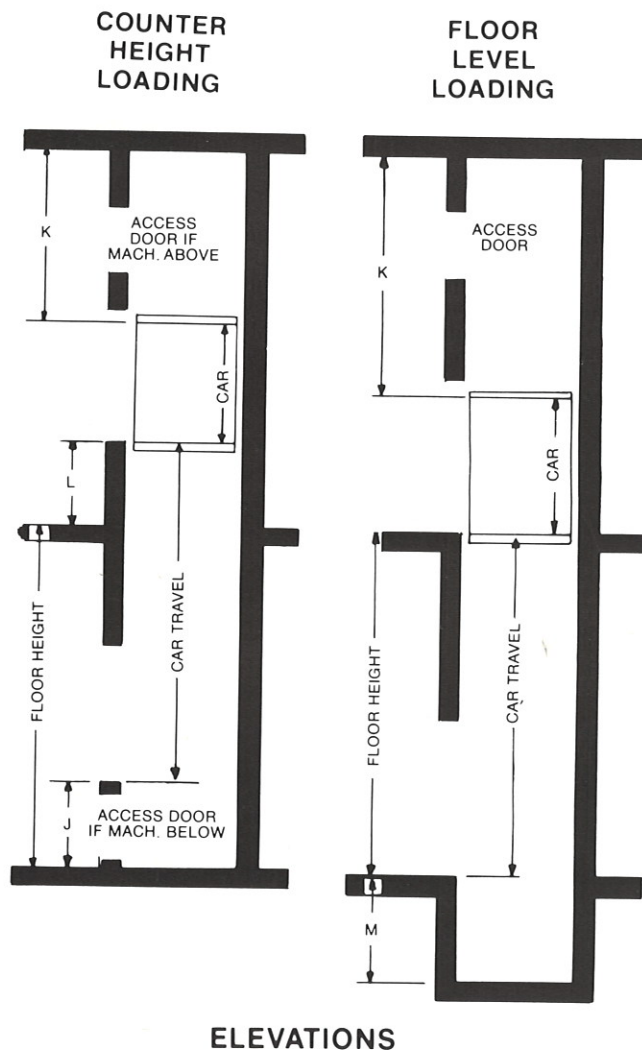
Counter Height Loading or Floor Level Loading models are 1420 with the machine below adjacent to hoistway, and 1421 with the machine above. Applicable for all moderate speed requirements up to 35 feet of travel. Ideal for non-load bearing walls. These models support and transmit all down loads to the bottom of the hoistway. Capacities from 150 to 500 pounds and car speed of 50 fpm.

moderate speed electric drum drive letter lift

Counter Height Loading models 1441 (machine above) and 1442 (machine below). Capacities are 25 and 50 pounds, speed 50 fpm, maximum travel 35'0", standard car size 15" wide, 15" deep, 18" high.

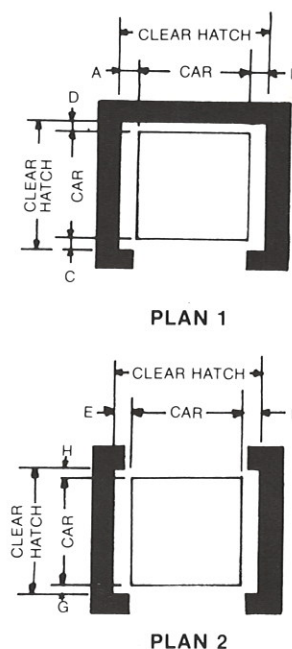
Except for model 1441 and 1442 (letter lift) optional car sizes are available up to 9 square feet of floor area and up to 4'-0" high.

dumbwaiters



Montgomery Elevator Company has dumbwaiters for every need including electric traction and drum machine models. These dumbwaiters are manufactured to rigid high standards of quality. For more information including available options, write for Montgomery's brochure SF2048.

For details on dumbwaiter entrances, see page 18.



PLAN VIEWS

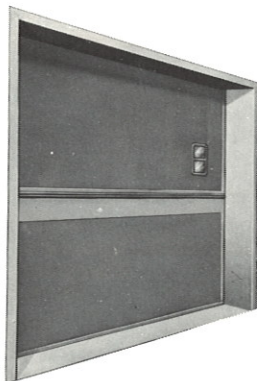
COUNTER HEIGHT LOADING													
			PLAN 1				PLAN 2						
MODEL NO.	TYPE OF MACHINE	MACHINE LOCATION	OPENINGS FRONT ONLY				OPENINGS FRONT & REAR ELEVATIONS						
			A	B	C	D	E	F	G	H	J	K	L M
1401	Traction	Above	6 1/2	5 1/2	3	6 1/2	6 1/2	5 1/2	3	3	30	54	30 -
1402	Traction	Below	6 1/2	5 1/2	3	6 1/2	6 1/2	5 1/2	3	3	34	42	30 -
1431	Traction	Above	6 1/2	5 1/2	3	3	6 1/2	5 1/2	3	3	30	48	30 -
1432	Traction	Below	6 1/2	5 1/2	3	3	6 1/2	5 1/2	3	3	34	42	30 -
1420	Drum	Below	6	6	3	3	6	6	3	3	34	36	30 -
1421	Drum	Above	6	6	3	3	6	6	3	3	30	48	30 -
1441	Drum	Above	4	4	3	3	4	4	3	3	42	48	42 -
1442	Drum	Below	4	4	3	3	4	4	3	3	42	42	42 -
FLOOR LEVEL LOADING													
1405	Traction	Above	6 1/2	5 1/2	3	6 1/2	6 1/2	5 1/2	3	3	0	54	0 36
1406	Traction	Below	6 1/2	5 1/2	3	6 1/2	6	6	3	3	0	42	0 36
1420	Drum	Below	6	6	3	3	6	6	3	3	0	42	0 36
1421	Drum	Above	6	6	3	3	6	6	3	3	0	48	0 36

*Machine below for floor loading dumbwaiter requires the machine to be placed adjacent to the shaftway.

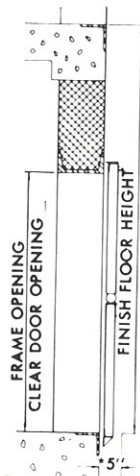
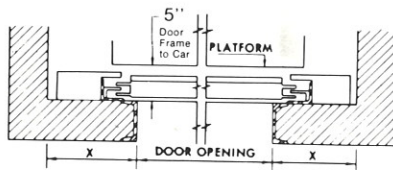
**Floor level loading with slide up doors, M = 12" minimum.

NOTES: Each car gate reduces useable F to B car space by 1 1/2". Dimension K is based on bi-parting car gates and/or doors.

freight doors



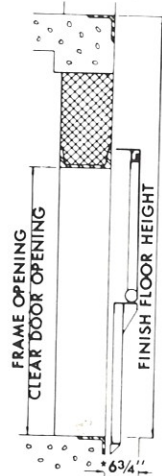
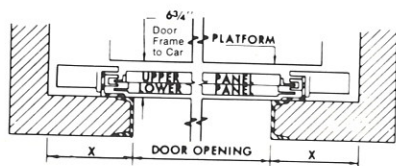
regular type door



DIMENSION KEY

- X — 13" minimum return required for motorized door of either type shown.
 X — 10" minimum return required for manual door of either type shown.
 Minimum pit depth = $\frac{1}{2}$ door height plus 6". Pit depth for door may be more or less than pit depth required for elevator, depending on height of door. Door frames must extend to the floor beam above unless walls are poured concrete or brick.

pass type door



MINIMUM FLOOR HEIGHT BASED ON OPENING HEIGHT OF DOOR		
OPENING HEIGHT OF DOOR	REGULAR TYPE DOOR	*PASS TYPE DOOR
6'-6"	10'-3"	9'-3"
7'-0"	11'-0"	9'-9"
7'-6"	11'-9"	10'-3"
8'-0"	12'-6"	10'-9"
8'-6"	13'-3"	11'-3"
9'-0"	14'-0"	11'-9"
10'-0"	15'-6"	12'-9"

*Minimum floor heights shown for pass type doors may be reduced by using special constructed doors. Consult your local Montgomery Representative for exact information for your drawings.

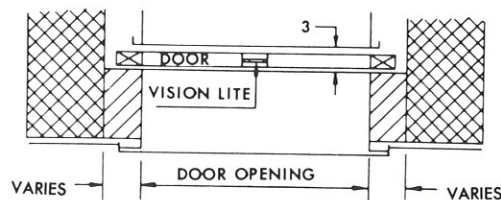
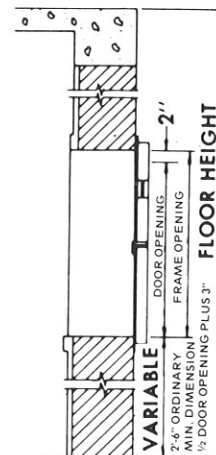
dumbwaiter doors

Dumbwaiter doors carry U/L labels and are bi-parting type with steel frames and sound deadened door panels with glass vision lights. Finish is prime paint.



- Options: Hollow metal insulated door panels.
 Stainless steel sills.
 Baked enamel or stainless steel finish.
 Slide up or slide down type entrances.

DIMENSION KEY — One opening must be larger than the car so the assembled car can be placed into the hatch or removed for service or repair. Front walls to be left out until door frames are installed. Refer to page 17 for additional data.



SEE PAGES 16 AND 17
 FOR DUMBWAITER
 DETAILS

escalators

Escalators move more people at lower cost per passenger than any other form of vertical transportation. They may be the primary carrier in retail buildings, in transportation terminals and in highly populated office buildings, or can effectively augment elevator systems, especially in high rise office buildings.

Operating from main floors to: lower parking levels, mezzanine or second floor shops and restaurants, or top elevator floor to penthouse restaurants. Escalators provide the most efficient transportation in these heavy traffic locations, allowing elevator systems to serve other areas of the building more efficiently.

EFFICIENCY –

two steps on the same level at entry and exit speeds and safeguards traffic “a montgomery exclusive.”

SAFETY –

more and better safety devices than any other escalator.

APPEARANCE –

durable modern materials retain attractive appearance.

LOW COST MAINTENANCE –

attained by high quality equipment.

DEPENDABILITY –

quickly and easily serviced – less “down” time.



Miami Free Zone, Miami, Florida. 2 Montgomery escalators and 5 Montgomery elevators.

typical montgomery escalator users

RETAIL

Allied Stores Corporation
Associated Dry Goods Corporation
Bonwit Teller
Carter-Hawley Stores
City Stores Company
Dayton-Hudson Corporation
Dillard Department Stores, Inc.
T. Eaton Company Ltd.
Federated Department Stores, Inc.
Hudson Bay Co.
R. H. Macy and Company, Inc.
Marshall Field and Company
May Department Stores Company
Mercantile Stores, Inc.
Montgomery Ward and Company
J. C. Penney Co., Inc.
Saks Fifth Avenue
Sears Roebuck & Co.
Woodward & Lothrop, Inc.
Woodward Department Stores

OFFICE-BANK-HOTEL

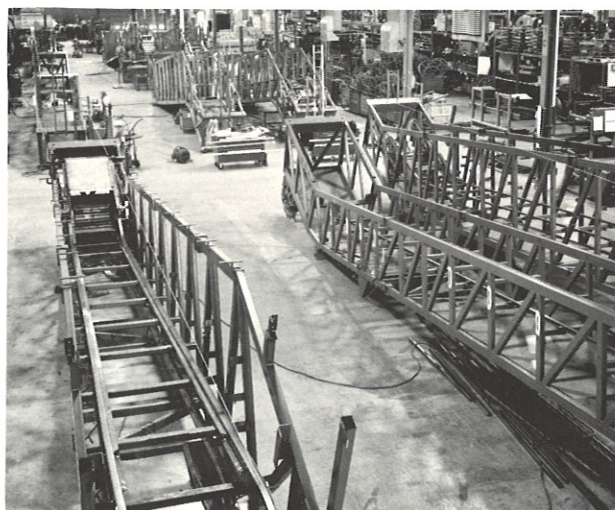
Blue Cross-Blue Shield
Caterpillar Tractor Co.
Disneyland Hotel
Ford Motor Company
General Motors Corporation
Hilton Hotels Company
Prudential Plaza
Sheraton Hotel Corp.

TRANSPORTATION & PUBLIC

Atlanta International Airport
Boston Subway, Mass. Transit Authority
Candlestick Park
Chicago Transit Authority
Dallas/Fort Worth International Airport
Denver Stapleton Airport
Detroit Cobo Hall
Honolulu International Airport
The Louisiana Superdome
Montreal (Mirabel) International Airport
San Francisco-Rapid Transit/BARTD
Sea-Tac International Airport
Chiang Kai-Shek Int'l. Airport (Taiwan)
Toronto International Airport
Toronto Transit Commission

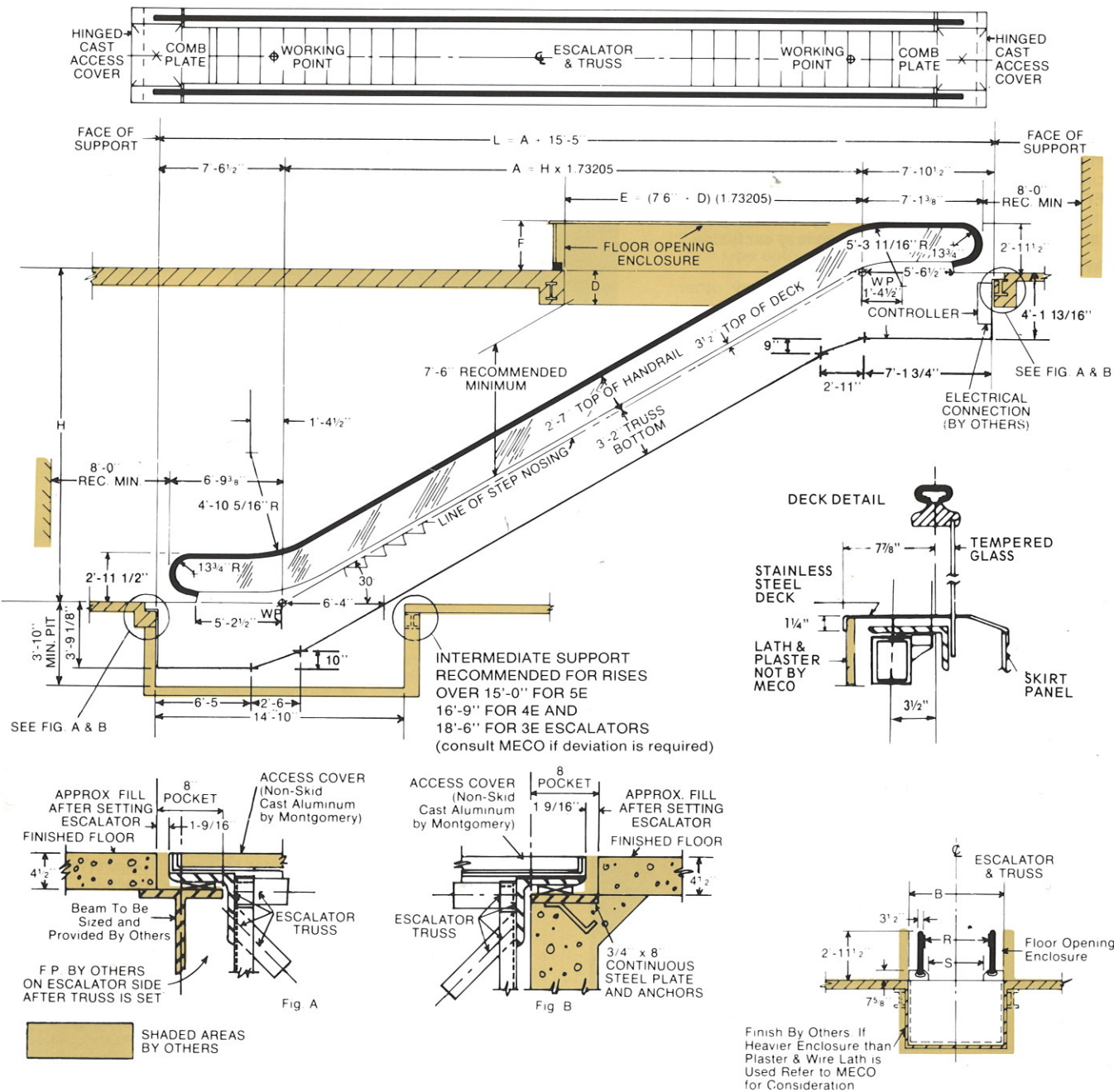


Fox Hills Mall, Culver City, California. 8 Montgomery escalators and 5 Montgomery elevators.



Montgomery Escalator Factory, Moline, Illinois.
Escalator being assembled in new escalator factory.

crystal 3000 glass balustrade

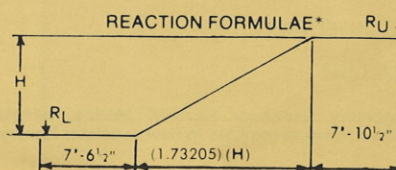


LAYOUT NOTE:

The following information, when available, must be shown on all layouts for use of the balustrade manufacturer.

D—Dimension from finished floor to the finished plaster ceiling or bottom of smoke guard.

E-F-G—Detail and kind of wellway railings or fire shutter enclosures which are not furnished by the balustrade manufacturer.

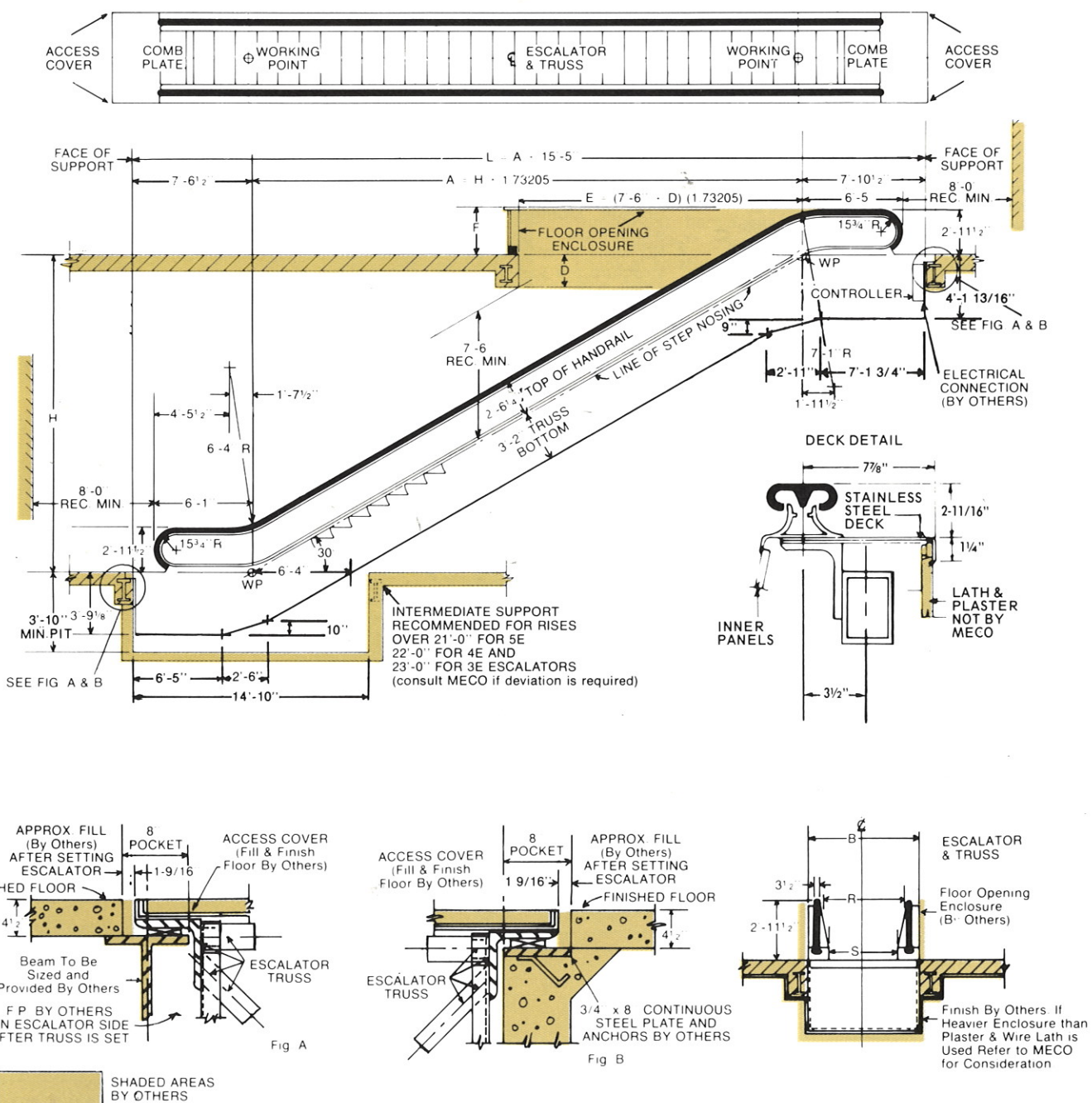


Consult MECO for reactions if intermediate support is used.

32' ESCALATOR	
RL = (550)H + 10.000	RU = (550)H + 11.100
40' ESCALATOR	
RL = (660)H + 10.570	RU = (660)H + 11.670
48' ESCALATOR	
RL = (660)H + 11.650	RU = (660)H + 12.750

escalators

solid balustrade



Reaction formulae based on
50% dead load
25% live load
25% impact
Includes weight of metal lath and plaster
covering on sides and soffit.

WIDTH CHART						
Model No.	Capacity Per Hour At		Rated Width R	Step Width S	Over-All Width B (Note 1)	Well Width Rough Opening (Note 2)
	90fpm	120fpm				
3E	5 000	6 500	32"	24"	4'-4"	Over-All Width B = 2'
4E	7 000	9 000	40"	32"	5'-0"	
5E	8 000	10 000	48"	40"	5'-8"	

NOTES:

- NOTES:
1. Includes exterior of lath and plaster by others.
 2. Enclosure between rough opening and finished escalators to be provided by others.

montgomery[®] escalators

standard equipment

STANDARD EQUIPMENT INCLUDES

complete truss fabricated of welded, hot rolled, structural steel tubes; precision worm gear drive; roller and ball bearings throughout; flange mounted motor; D.C. brake; portable UL classified* controller; complete electrical and mechanical safety system; reversing stations, interchangeable precision assembled steps with cleated risers; matched endless step chains; accurately aligned track system; complete balustrade including skirts; inner panels, decks and endless moving neoprene rubber handrail; floor access covers to upper and lower machinery well both within truss area.

REQUIREMENTS

1. Floor around escalator is not to be laid until escalator is installed.
2. Flooring within 8" of escalator floor access doors (top and bottom) is not to be laid until floor access doors are in place.
3. Electric conduits, sprinkler pipes or soffit lights must be installed entirely outside of truss at all points except where codes require sprinkler protection of escalator machinery. Consult Montgomery for location within truss.
4. No walls or other parts of building structure are to be carried on truss.

*Classified by Underwriters Laboratories Inc. as to fire and shock hazard only. Elevator Control Panel classed NIUU. See UL Classified Products Directory.

OWNER TO PROVIDE AND INSTALL THE FOLLOWING

1. All escalator supports including bearing plates if concrete beams are used.
2. 3 phase, 60 cycle power supply and 110 volt light supply to controller.
3. Combination lamp receptacle and convenience outlet in machine room and lower reversing station.
4. Paper backed wire lath or its equivalent to be used for plaster enclosure of escalator.
5. All items marked "by others."
6. Fill and finish flooring for access covers for solid balustrade escalators.

CONTACT ANY OF OUR SALES AND SERVICE OFFICES TO OBTAIN EXPERT PLANNING ASSISTANCE INCLUDING COMPLETE LAYOUT AND SPECIFICATIONS

MOTOR HORSEPOWER REQUIREMENTS

POWER DATA

90 FPM	SIZE	FLOOR HEIGHT
10 HP	3E	5'-6" to 24'-0"
	4E	5'-6" to 17'-0"
	5E	5'-6" to 15'-0"
15 HP	3E	Over 24'-0" to 36'-0"
	4E	Over 17'-0" to 26'-0"
	5E	Over 15'-0" to 23'-0"
20 HP	3E	Over 36'-0" to 42'-0"
	4E	Over 26'-0" to 30'-0"
	5E	Over 23'-0" to 26'-0"

90 FPM	200 VOLTS		460 VOLTS		575 VOLTS	
HP	STARTING CURRENT IN AMPERES	RUNNING CURRENT IN AMPERES	STARTING CURRENT IN AMPERES	RUNNING CURRENT IN AMPERES	STARTING CURRENT IN AMPERES	RUNNING CURRENT IN AMPERES
10	128.25	33.12	57.75	14.4	46.2	11.5
15	213.75	50.6	93.07	22.0	74.47	17.6
20	270.75	64.4	117.75	28.0	94.2	22.4

120 FPM	SIZE	FLOOR HEIGHT
10 HP	3E	5'-6" to 19'-0"
	4E	5'-6" to 14'-0"
	5E	5'-6" to 12'-0"
15 HP	3E	Over 19'-0" to 28'-0"
	4E	Over 14'-0" to 20'-0"
	5E	Over 12'-0" to 18'-0"
20 HP	3E	Over 28'-0" to 32'-0"
	4E	Over 20'-0" to 23'-0"
	5E	Over 18'-0" to 21'-0"

120 FPM	200 VOLTS		460 VOLTS		575 VOLTS	
HP	STARTING CURRENT IN AMPERES	RUNNING CURRENT IN AMPERES	STARTING CURRENT IN AMPERES	RUNNING CURRENT IN AMPERES	STARTING CURRENT IN AMPERES	RUNNING CURRENT IN AMPERES
10	130.5	29.4	56.77	12.8	45.45	10.2
15	191.25	47.4	83.1	20.6	66.45	16.5
20	264.75	60.0	114.97	26.1	91.95	20.9

120/90 FPM (2 SPEED)

10/7.5 HP	3E	5'-6" to 16'-0"
	4E	5'-6" to 12'-0"
	5E	5'-6" to 11'-0"
15/11.25 HP	3E	Over 16'-0" to 24'-0"
	4E	Over 12'-0" to 18'-0"
	5E	Over 11'-0" to 16'-0"
20/15 HP	3E	Over 24'-0" to 32'-0"
	4E	Over 18'-0" to 23'-0"
	5E	Over 16'-0" to 21'-0"

120/90 FPM (2 SPEED)

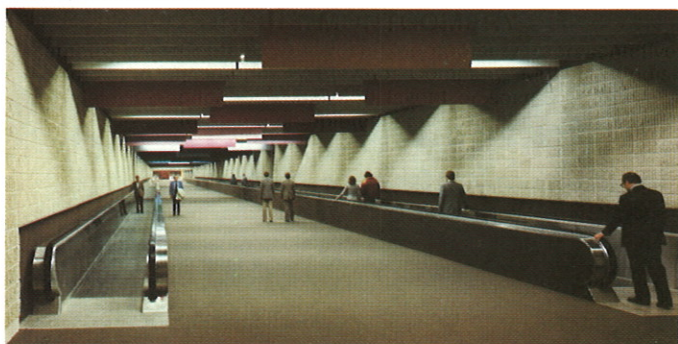
HP	200 VOLTS		460 VOLTS		575 VOLTS	
HP	STARTING CURRENT IN AMPERES	RUNNING CURRENT IN AMPERES	STARTING CURRENT IN AMPERES	RUNNING CURRENT IN AMPERES	STARTING CURRENT IN AMPERES	RUNNING CURRENT IN AMPERES
10/7.5	135.75/105.75	30.8/25.9	69.75/62.25	14/12.9	54/47.25	11.1/10.4
15/11.25	190.5 /135.75	45/37.4	95.25/65.25	20.1/16.6	72/48	16.1/13.2
20/15	331.5 /186	64.5/49.7	130.5 /84.75	27/21.8	102.75/70.5	21.7/17.8

ALL POWER DATA BASED ON 3 PHASE 60 HERTZ

power walks & ramps



Mirabel International Airport, Montreal, Quebec. 16 Montgomery Power Ramps, 13 Montgomery escalators, 6 Montgomery geared traction elevators, 3 Montgomery hydraulic elevators and 4 Montgomery dumbwaiters.



William B. Hartsfield-Atlanta International Airport, Atlanta, Georgia. 20 Montgomery Power Walks and 34 Montgomery escalators.

POWER WALKS AND POWER RAMPS

provide fast safe, high-volume horizontal, or combined horizontal and inclined (to 15 degrees) transportation of people within buildings, or outdoors. Exposition centers, stadiums, auditoriums, transportation terminals, parking lots to buildings and in or out of buildings are a few walk-ramp applications to transport people where walking is not advantageous.

STANDARD EQUIPMENT INCLUDES

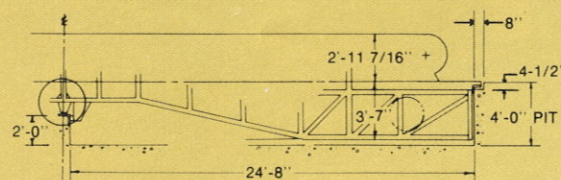
complete truss fabricated of welded, hot rolled, structural steel tubes (or combination of truss and channel stan-chion); precision worm gear drive; roller and ball bearings throughout; flange mounted motor; D.C. brake; portable UL classified* controller; complete electrical and mechanical safety system; reversing stations; interchangeable precision assembled treadway pallets with interlocking treads on adjacent pallets; matched endless pallet chains; accurately aligned track system; complete balustrades including inner panels; decks with endless moving neoprene rubber hand rail; and floor access covers to upper and lower machinery wells both within truss area.

*Classified by Underwriters Laboratories Inc. as to fire and shock hazard only. Elevator Control Panel classed NIUU. See UL Classified Products Directory.

CONSULT MONTGOMERY

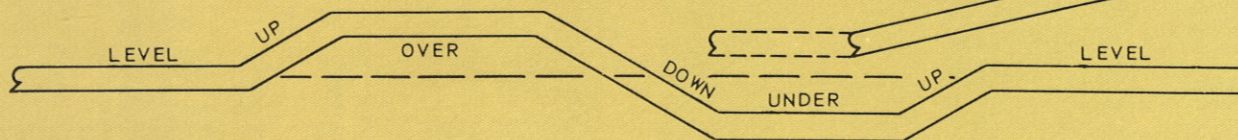
Contact your local Montgomery representative or the Montgomery Elevator Company, Moline, Illinois, for application data, and layout or specification data needed to plan a complete installation.

PIT CONDITIONS AT BOTH ENDS OF POWER WALKS

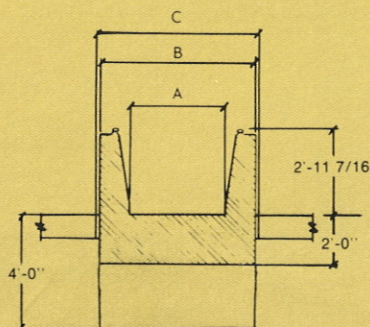


PLANNING POWER WALKS/POWER RAMPS

Any arrangement or combination of horizontal and inclines, to a maximum of 15 degrees for almost any length can be provided.

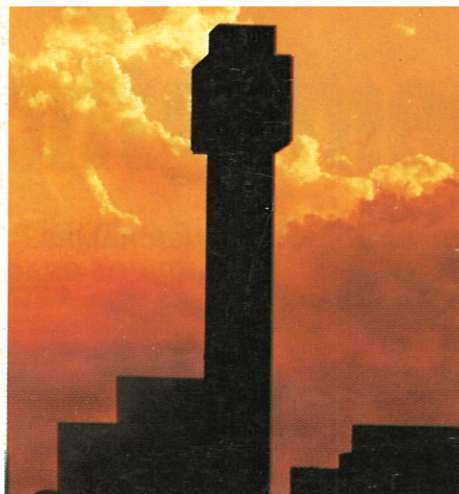


MODEL NO. W = WALK R = RAMP	TREAD WIDTH A	OVERALL WIDTH DECORATOR PANEL OR LATH & PLASTER EXTERIOR COVERING B	WELL WIDTH ROUGH OPENING C
3W-R	24"	4'-4"	OVERALL WIDTH B + 2"
4W-R	32"	5'-0"	
5W-R	40"	5'-8"	



WIDTHS:

Three standard tread widths are 24", 32" and 40". The 24" width accommodates one adult; the 32" width provides ample room for adult and child or adult and shopping cart; the 40" width accommodates two adjacent adults or adult with luggage.



SALES/SERVICE OFFICES

UNITED STATES

Alabama

Birmingham
Mobile
Montgomery

Alaska

Anchorage

Arizona

Phoenix
Tucson

Arkansas

Little Rock

California

Fresno
Long Beach
Los Angeles
Modesto
Palm Springs
Redding
Riverside
Sacramento
San Diego
San Francisco
San Jose
Santa Maria

Colorado

Colorado Springs
Denver
Greeley

Connecticut

Hartford
(General Elev. Co.)

Delaware

Wilmington
(General Elev. Co.)

District of Columbia

Washington D.C.

Florida

Daytona Beach
Gainesville
Ft. Lauderdale
Ft. Myers
Jacksonville
Lakeland
Miami
Naples
Orlando
Pensacola
Sarasota/Bradenton
St. Petersburg
Tallahassee
Tampa
West Palm Beach

Georgia

Atlanta
Augusta
Macon

Hawaii

Hilo
(Amelco Elev. Co.)
Honolulu
(Amelco Elev. Co.)
Wailuku
(Amelco Elev. Co.)

Illinois

Bloomington
Carbondale
Chicago
Decatur
Dixon
Galesburg
Joliet
LaSalle
Moline
(Corp. Hdqts.)
Peoria
Quincy
(Wagner Elev. Serv., Inc.)
Rock Island
Rockford
(Lamps Elev. Sales
& Serv.)
Springfield

Indiana

Fort Wayne
(Early Elev. Corp.)
Indianapolis
Kokomo
(Early Elev. Corp.)
Muncie
South Bend
(Early Elev. Corp.)

Iowa

Burlington
(Wagner Elev. Serv., Inc.)
Cedar Rapids
Clinton
Des Moines
(Chenoweth Kern
Elev. Serv.)
Dubuque
Ottumwa
(Wagner Elev. Serv., Inc.)
Sioux City
(Carter Elev. Co., Inc.)
Waterloo

Kansas

Hays
Pittsburgh
Salina
Topeka
Wichita
Kentucky
Bowling Green
(Murphy Elev. Co.)
Lexington
(Murphy Elev. Co.)
Louisville
(Murphy Elev. Co.)
Richmond
(Murphy Elev. Co.)

Louisiana

Baton Rouge
Lafayette
New Orleans
Shreveport

Maryland

Annapolis
(General Elev. Co.)
Baltimore
(General Elev. Co.)
Cumberland
(General Elev. Co.)
Hagerstown
(General Elev. Co.)
Salisbury
(General Elev. Co.)

Massachusetts

Boston
Worcester

Michigan

Ann Arbor
Benton Harbor
Detroit
Flint
Grand Rapids
Lansing
Muskegon
Traverse City

Minnesota

Minneapolis-St. Paul

Mississippi

Biloxi
Hattiesburg
Jackson
Meridian
Missouri
Columbia
Jefferson City
Joplin
Kansas City
St. Joseph
St. Louis
(Eberius Elev. Co.)

Montana

Billings
Bozeman
Butte
Great Falls
Helena
Missoula

Nebraska

Lincoln

Nevada

Las Vegas

New Jersey

Atlantic City
(General Elev. Co.)
Camden
(General Elev. Co.)
Kenilworth
(General Elev. Co.)

New Mexico

Albuquerque

New York

Albany
(Midstate Elev. Co.)
Buffalo
(Gallagher Elev. Co., Inc.)
Ithaca
(Midstate Elev. Co., Inc.)
Long Island City
(Staley Elev. Co.)
Massena
(Midstate Elev. Co., Inc.)
New York City
Syracuse
(Midstate Elev. Co., Inc.)
Utica
(Midstate Elev. Co., Inc.)
Watertown
(Midstate Elev. Co., Inc.)

North Carolina

Boone
Charlotte
Raleigh
Ohio
Akron
Cincinnati
Cleveland
Columbus
Dayton
Mansfield
Toledo
(Toledo Elev. &
Machine Co.)

Oklahoma

Enid
Oklahoma City
Stillwater
Tulsa

Oregon

Eugene
Portland

Pennsylvania

Allentown
(General Elev. Co.)
Harrisburg
(General Elev. Co.)
Lancaster
(General Elev. Co.)
Philadelphia
(General Elev. Co.)
Pittsburgh
(General Elev. Co.)
Reading
(General Elev. Co.)
Scranton
(Grindl Elev. Co.)
Windber
(Eastern Elev. Serv.
& Sales)
Wilkes-Barre
(General Elev. Co.)
Williamsport
(General Elev. Co.)

South Carolina

Charleston

South Dakota

Aberdeen
(Carter Elev. Co., Inc.)
Rapid City
(Carter Elev. Co., Inc.)
Sioux Falls
(Carter Elev. Co., Inc.)

Tennessee

Kingsport
Knoxville
Memphis
Nashville
(Capitol City Elev.
Co., Inc.)

Texas

Amarillo
Austin
Beaumont
Corpus Christi
Dallas
El Paso
Fort Worth
Houston
Lubbock
Odessa
San Antonio
Tyler
Waco

Utah

Salt Lake City

Vermont

Burlington

Virginia

Norfolk
(General Elev. Co.)
Richmond
(General Elev. Co.)

Washington

Olympia
Seattle
Spokane
Tacoma
Yakima

Wisconsin

Appleton
(J. B. Elev. Co.)
Green Bay
(J. B. Elev. Co.)
Madison
(Braun Electric &
Elevator, Inc.)
Milwaukee
Sheboygan
(J. B. Elev. Co.)
Wausau
(J. B. Elev. Co.)

Wyoming

Casper
Cheyenne

CANADA

Alberta

Calgary
Edmonton

British Columbia

Kelowna
Nanaimo
Prince George
Prince Rupert
Vancouver
Victoria

Manitoba

Winnipeg

Ontario

Barrie
Brockville
Hamilton
Kitchener
London
North Bay
Ottawa
Peterborough
St. Catharines
Toronto
Windsor

Maritime Provinces

St. John
New Brunswick
(Stephenson Machine
& Mfg. Co.)

Quebec

Hull
Montreal
Quebec

Saskatchewan

Saskatoon

ARGENTINA

Buenos Aires
(Ascensores Ing.
Guillelmi S.R.L.)

PUERTO RICO

Santurce
(Caribbean Elev.
Serv., Inc.)

BAHAMAS

Nassau
(Basden Elev. Co., Ltd.)

GUAM

Agana

(Amelco Elev. Co.)

MEXICO

Mexico 8 D.F., Mexico
(Elevadores de
Mexico S.A.)

PANAMA

Afilada A. Hojalateria
(Instalaciones
Técnicas, S.A.)

PHILIPPINES

Manila
(Amelco Elev. Co.)

REPUBLIC OF CHINA

Taipei
Taiwan
(Delta Enterprises, Ltd.)

REPUBLIC OF DOMINICA

Santo Domingo
Dominican Republic
(Guridi Comercial S.A.)

SAUDI ARABIA

Riyadh Saudi Arabia
(T. Frederick Jackson
(International Ltd.))

VENEZUELA

Caracas
(C. A. Venezolanas
de Ascensores)

Numerous other
Authorized Representatives
are located throughout
the world.

Check the Yellow Pages for the nearest Montgomery location or call our national headquarters Area Code 309-764-6771.
We're not very far from anywhere in North America.

montgomery®
ELEVATORS/ESCALATORS
POWER WALKS & RAMPS

MONTGOMERY ELEVATOR COMPANY, MOLINE, ILLINOIS 61265 / MONTGOMERY ELEVATOR COMPANY, LIMITED, TORONTO, ONTARIO M9B3S5 / OFFICES IN PRINCIPAL CITIES OF NORTH AMERICA.

Form No. SF2015-81

montgomery moves people

PRINTED IN U.S.A.