

14.1/Mon<sup>®</sup>

# montgomery

Montgomery Elevator Company, Moline, Illinois 61265  
Montgomery Elevator Co., Limited, Toronto, Ontario M9B3S5  
Offices in principal cities of North America

*montgomery moves people*

elevators  
escalators  
power walks  
& ramps





# montgomery<sup>®</sup> elevators/escalators

## contents

COVER • 1

FOREWORD • 2-3

CONTROLS: SSC-6010 solid state and  
ESP Group Supervisory • 4

### PASSENGER ELEVATORS

High Speed Traction • 5  
Medium and Low Speed Traction • 6  
SPM standard pre-manufactured  
traction • 7  
Basement Traction • 8  
Hospital Traction • 9  
Oil Hydraulic • 10  
SPM Oil Hydraulic • 11

### ENTRANCES

Single Speed Slide • 12  
Two Speed Slide • 12  
Center Opening Slide • 12  
Cars and Fixtures • 13

### FREIGHT ELEVATORS

Traction • 14  
Oil Hydraulic • 15

### DUMBWAITERS • 16-17

Traction and Electric  
Drum Drive •

### DUMBWAITER DOORS • 18

### ESCALATORS • 19

Crystal Balustrade • 20  
Solid Balustrade • 21  
Standard Equipment • 22

### POWER WALKS AND POWER RAMPS • 23

### PREVENTIVE MAINTENANCE • 24

### SALES/SERVICE OFFICES • 24

## for over 80 years

The Montgomery Elevator Company has maintained the highest standard of quality in design and manufacture of vertical transportation equipment. During these years, Montgomery Elevator Company has provided equipment for a wide variety of vertical transportation requirements.

## products

Montgomery's full product line includes:

### Electric Elevators

Gearless, Gearless and Oil Hydraulic  
Passenger and Freight  
Standard Pre-Manufactured Passenger Elevators  
Geared or Oil Hydraulic

### Escalators

Power Walks and Power Ramps  
Electric Dumbwaiters  
Automatic Parking Garage Elevators  
Stage, Sidewalk and Other Special Lifts  
Cross Over Bridges  
Solid State Controls

1 McCarren Field, Las Vegas, Nevada. 8 Montgomery power walks, 3 Montgomery escalators, 3 Montgomery hydraulic elevators.

2 Tishman, Westwood, Los Angeles, California. 13 Montgomery gearless passenger elevators with speeds up to 800 fpm serving 24 floors.

3 Fourth Financial Center, Wichita, Kansas. 2 Montgomery Crystal 2000 escalators, 7 Montgomery geared traction elevators.





# power walks & ramps

## research & development

A continuing program of research and development is a major Montgomery effort. Specialized equipment in Montgomery's tower laboratory provides facilities for engineered-testing of existing and proposed elevator equipment. Montgomery's search for improved design, greater safety and more economical operation is unending.

- 4 Northbrook Court, Northbrook, Illinois. 4 Crystal 2000 escalators, 4 oil hydraulic freight elevators.
- 5 Parravano Office Building, Los Angeles, California. 3 Montgomery geared traction passenger elevators.
- 6 Montgomery Center Building, Silver Springs, Maryland. 6 Montgomery geared traction elevators, 1 solid balustrade escalator.
- 7 The Louisiana Superdome, New Orleans, Louisiana. 32 Montgomery escalators, 5 Montgomery geared traction elevators.

## sales & service

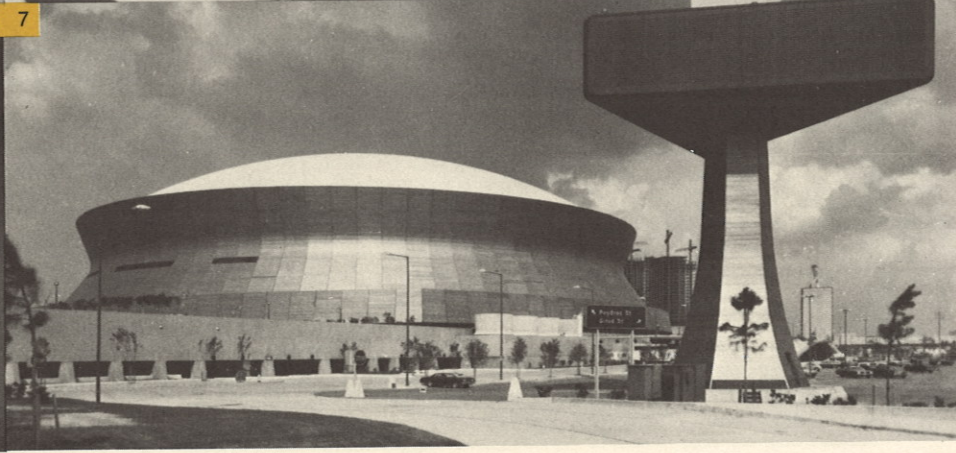
The Montgomery Sales and Service organization, second largest in the industry, has more than 170 offices (over 120 factory branches and 50 authorized Representatives) throughout North America (U.S., Canada, Mexico, Caribbean) and overseas. Montgomery is the largest independent exclusive elevator and escalator manufacturer in the Western Hemisphere.

Montgomery's eight manufacturing facilities, each fully staffed for the manufacture and assembly of elevator and escalator equipment are: Moline, Illinois (4); Philadelphia, Pennsylvania; Arkansas City, Kansas; Vancouver and Toronto, Canada.

The Eastern Canada division of Montgomery has served Eastern Canada for over 50 years. The Eastern Canada division has greatly expanded manufacturing capabilities to produce the full Montgomery line, including escalators and ESP Group Supervisory Control elevator systems.

The Western Canada division, established in 1919 in Vancouver, has always enjoyed a leading position in the elevator/escalator industry in Western Canada.

The Western Manufacturing Division has facilities in Arkansas City, Kansas for the manufacture of elevator cars and entrances. Guilbert, Inc., Philadelphia, Pennsylvania, manufactures manual and power operated doors for freight elevators.





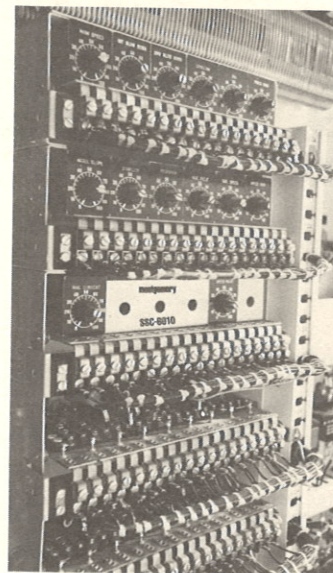
## SSC-6010 solid state elevator control

Montgomery SSC-6010 is a variable voltage elevator power control system that incorporates completely static control for adjustable speed, acceleration and deceleration, precise leveling accuracy and exceptionally smooth stops. Montgomery's SSC-6010 is designed for all traction elevators, geared and gearless, operating between speeds of 100-1500 fpm.

By eliminating the motor-generator set with its greater power consuming characteristics, the new Montgomery SSC-6010 solid state elevator power control system will reduce elevator power bills up to 25% per elevator. The secret is a transistor-like device called a thyristor which enables the Montgomery SSC-6010 to convert A.C. line power directly to controlled D.C. power.

The SSC-6010 offers many more benefits. By eliminating the motor-generator set, less machine room space is required and machine room loads are reduced. The entire system produces less heat which means longer equipment life and lower machine room ventilating and air conditioning requirements.

The Montgomery SSC-6010 adjusting section revolutionizes elevator adjusting, previously a tedious task consuming many man-hours. With SSC-6010, trained Montgomery technicians can quickly tune the system for most desirable performance by simply making potentiometer adjustments such as high speed, first slow down, leveling, field gain, acceleration slope, stability, response, speed gain, maximum current, etc. which achieve excellent long-term stability.

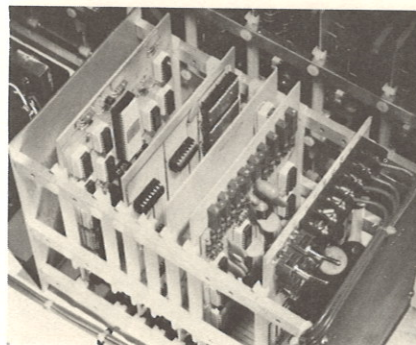


## miprom<sup>®</sup> microprocessor elevator logic control

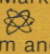
Montgomery MIPROM<sup>®</sup> is a microprocessor elevator logic control for the mass elevator market for low and medium-rise buildings using geared traction and oil hydraulic elevators as well as high-rise buildings having high speed gearless traction elevators.

Montgomery pioneered and developed MIPROM<sup>®</sup> for the mass market to offer a compact electronic elevator logic control having superior reliability, programmable flexibility and ease of maintenance.

Montgomery MIPROM<sup>®</sup> consists of a standardized 24x24-inch solid-state modular hardware package utilizing microprocessors to create an electronic brain which performs computer functions. The microprocessor correlates signals from the elevator and multiple programmable memories, then transmits logic instructions to the elevator.

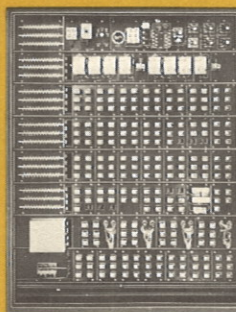


## ESP group supervisory control system

A Registered Trade Mark of the Montgomery Elevator Company, Montgomery's ESP  Group Supervisory Control with Measured Demand System and Electronic Sensor Programming is a highly sophisticated elevator control system. ESP anticipates each demand for service throughout the building and positions the elevators in the system for immediate response. ESP automatically adjusts to the constantly changing traffic demands, fully utilizing each elevator in the system, under every condition in the wide variation of traffic requirements from heavy incoming traffic to heavy outgoing traffic and to every possibility between these extremes.

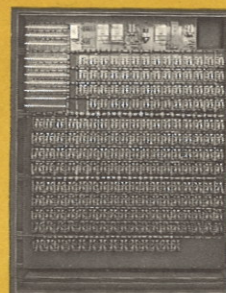
ESP with ZS (Zones of Service) automatically parks the elevators within selected zones throughout the building during periods of light traffic demand. This system assures immediate response to any demand for service, with minimum car movement. ZS reduces power consumption and equipment wear by limiting car movement only to that necessary to service traffic demand.

The flexibility of ESP permits engineered adjustment to the precise requirements of each building. Montgomery engineers carefully determine these requirements and assemble the basic module of the ESP system to exactly match the traffic demand.



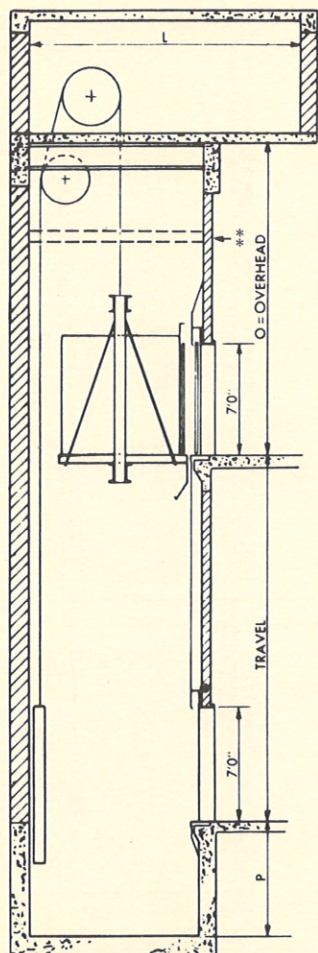
Typical Supervisory Module. Custom designed and built for each elevator of each project. The Supervisory Panel controls the movement of its individual car in response to commands from the Master Panel. Panel is enclosed with double door access in front and removable panels in rear.

Typical Master Module. This electronic brain of the ESP Group Supervisory Control System is custom designed and built for each project. Its function is to evaluate traffic demand and coordinate the movement of the group of elevators. Panel is enclosed in steel cabinet with double door access in front and removable panels in rear.



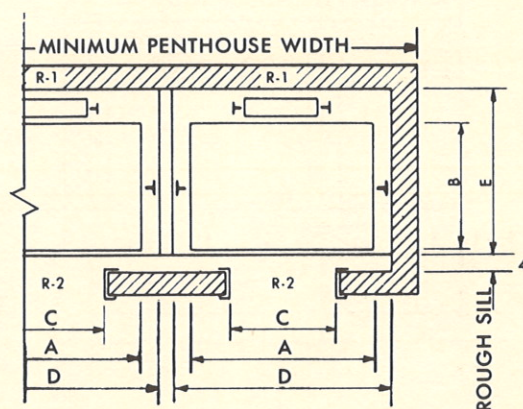


# passenger elevators



## high speed traction

High-Speed Traction Elevators meet the need for high quality performance, with speeds to 1200 fpm. Heavy traffic demands are served by ESP Group Supervisory Control Systems.



PLAN FOR ONE OR MORE ELEVATORS

### RECOMMENDED SIZES AND CAPACITIES

TYPE BUILDING	AVERAGE OFFICE HOTEL		LARGE OFFICE OR STORE
CAPACITY	2500#	3000#	3500#
A	7'-0"	7'-0"	7'-0"
B	5'-0"	5'-6"	6'-2"
C	3'-6"	3'-6"	3'-8"
*D	8'-4"	8'-4"	8'-4"
*E	6'-6"	7'-0"	7'-8"

MINIMUM PIT - OVERHEAD & MACHINE ROOM DIMENSIONS							
SPEED	400	500	600	700	800	1000	1200
L	26'-6"	26'-6"	26'-6"	26'-6"	27'-6"	29'-6"	31'-6"
O	17'-7"	18'-4"	19'-5"	21'-6"	21'-11"	25'-6"	27'-0"
P	7'-4"	8'-8"	8'-11"	12'-6"	12'-6"	12'-10"	15'-2"

#### NOTES:

- Reactions include allowances for impact but DO NOT include weight of concrete slab.
- Pit depths, overhead clearance and penthouse sizes are in accordance with ANSI code requirements. Local codes may vary these requirements.
- Layouts and dimensions shown are for center opening type entrances.
- Consult your Montgomery Representative for specific recommendations where space is limited or other conditions may necessitate further study.
- All data is general. Consult your local Montgomery Representative for exact information for your working drawings.

\* D and E dimensions are for car travel up to 100'. Add 1" to D and E for each additional 100' of car travel.

### OVERHEAD LOADS/LBS. APPROXIMATE PER ELEVATOR

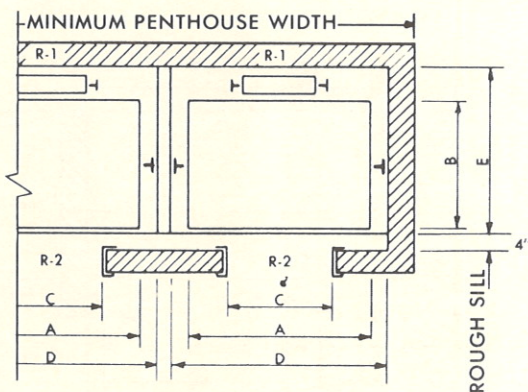
CAPACITY	SPEED	R-1	R-2
2500#	400	25000	15000
	500	26000	16000
	600	28000	18000
	700	29000	19000
	800	30000	20000
	1000	31000	21000
	1200	32000	22000
3000#	400	26000	15000
	500	27000	16000
	600	29000	18000
	700	30000	19000
	800	31000	20000
	1000	32000	21000
	1200	33000	22000
3500#	400	30000	21000
	500	32000	22000
	600	34000	23500
	700	36000	25000
	800	39000	27500
	1000	42000	29000
	1200	44000	30000



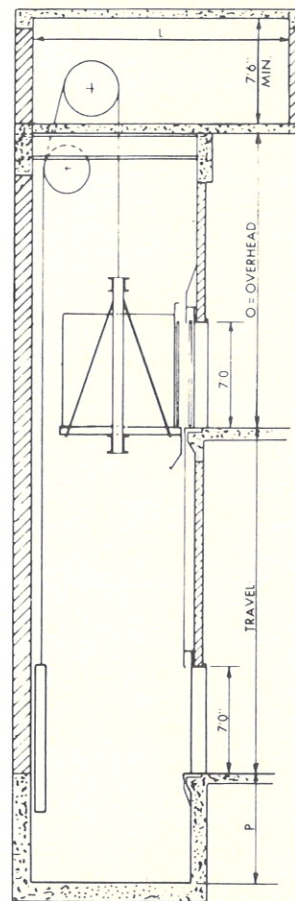
# montgomery® passenger elevators

## medium and low speed traction

Medium and Low Speed Traction Elevators perform efficiently and economically when serving traffic demands in medium and low rise buildings.



PLAN FOR ONE OR MORE ELEVATORS



### RECOMMENDED SIZES AND CAPACITIES

TYPE BUILDING	SMALL APARTMENT	SMALL OFFICE	AVERAGE OFFICE HOTEL		LARGE OFFICE OR STORE
CAPACITY	1200 #	2000 #	2500 #	3000 #	3500 #
A	5'-0"	6'-4"	7'-0"	7'-0"	7'-0"
B	4'-0"	4'-5"	5'-0"	5'-6"	6'-2"
C	2'-6"	3'-0"	3'-6"	3'-6"	3'-8"
D	6'-4"	7'-8"	8'-4"	8'-4"	8'-4"
E	5'-4"	5'-9"	6'-6"	7'-0"	7'-8"

### MINIMUM PIT - OVERHEAD & MACHINE ROOM DIMENSIONS

SPEED	100	200	250	300	350	400
L	16'-0"	16'-0"	16'-0"	17'-0"	17'-0"	21'-6"
O	15'-6"	15'-9"	16'-2"	16'-4"	16'-6"	16'-10"
P (a)	4'-0"					
P (b)		4'-0"	4'-6"	4'-6"	5'-1"	5'-7"
P (c)		5'-8"	6'-1"	6'-6"	6'-11"	7'-6"

### NOTES

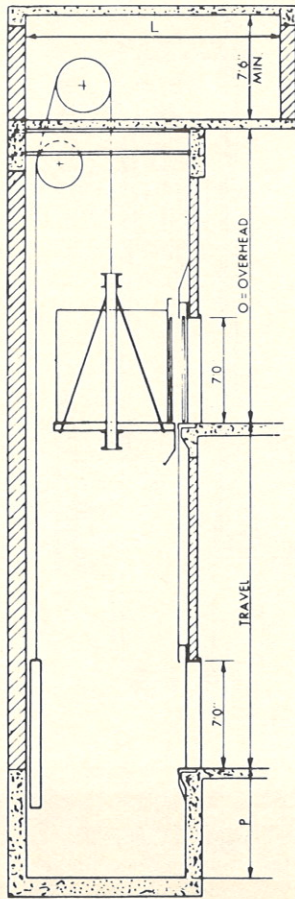
1. Reactions include allowances for impact but DO NOT include weight of concrete slab.
  2. Pit depths, overhead clearance and penthouse sizes are in accordance with ANSI code requirements. Local codes may vary these requirements.
  3. Layouts and dimensions shown are for center opening type entrances.
  4. Consult your Montgomery Representative for specific recommendations where space is limited or other conditions may necessitate further study.
  5. All data is general. Consult your local Montgomery Representative for exact information for your working drawings.
- P (a) indicates minimum pit required for elevators with type "A" safety.  
P (b) indicates minimum pit required for elevators with type "B" safety.  
P (c) indicates minimum pit required for elevators with type "C" safety.

### OVERHEAD LOADS/LBS. APPROXIMATE PER ELEVATOR

CAPACITY	SPEED FPM	R-1	R-2
1200 #	100	12000	6500
2000 #	100	12500	8800
	200	15200	9900
	250	15500	10800
	300	15800	11000
	350	19800	12000
2500 #	400	24000	14500
	100	14900	10300
	200	16700	11500
	250	17200	12300
	300	17500	12500
3000 #	350	20400	12800
	400	25000	15000
	100	17100	12100
	200	19400	12200
	250	19800	12600
3500 #	300	20200	13200
	350	20400	13300
	400	26500	16000
	100	18300	13300
	200	21000	14100
3500 #	250	21300	14400
	300	21800	14700
	350	25200	15100
	400	28000	16800



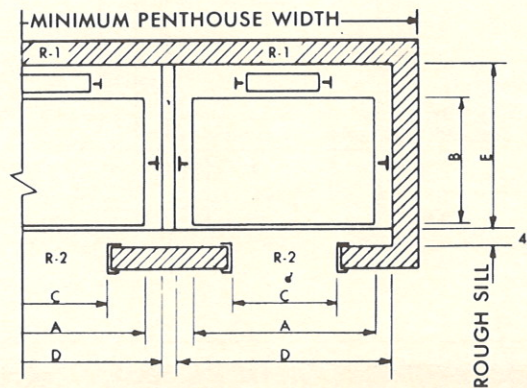
# passenger elevators



## SPM® standard pre-manufactured traction elevators

SPM elevators perform efficiently and economically when serving traffic demands in medium and low rise buildings. Standard pre-manufacturing by Montgomery means lower cost to the owner, faster delivery and installation while maintaining "custom" quality.

SPM elevators have a capacity of 2500 pounds and offer speeds of 200 or 350 fpm. They have center opening doors and are furnished in single or multiple car operation up to 4 car group. Flexibility is offered in entrance and fixture selection, and optional decor and finishes.



PLAN FOR ONE OR MORE ELEVATORS

### NOTES:

1. Reactions include allowances for impact but DO NOT include weight or concrete slab.
2. Pit depths, overhead clearance and penthouse sizes are in accordance with ANSI code requirements. Local codes may vary these requirements.
3. Layouts and dimensions shown are for center opening type entrances.
4. Consult your Montgomery Representative for specific recommendations where space is limited or other conditions may necessitate further study.
5. All data is general. Consult your local Montgomery Representative for exact information for your working drawings.
6. For complete details ask for Montgomery brochure SF2056.

DIMENSION CHART			
CAPACITY	2500 #		
A	7'-0"		
B	5'-0"		
C	3'-6"		
D	8'-4"		
E	6'-3"		
MINIMUM PIT-OVERHEAD AND MACHINE ROOM DIMENSIONS			
SPEED	200		350
L	13'-8"		13'-8"
O	15'-4"		16'-0"
P	3'-10"		4'-10"
OVERHEAD LOADS/LBS. APPROXIMATE PER ELEVATOR			
CAPACITY	SPEED FPM	R-1	R-2
2500 #	200	22,000	11,500
	350	22,000	11,500

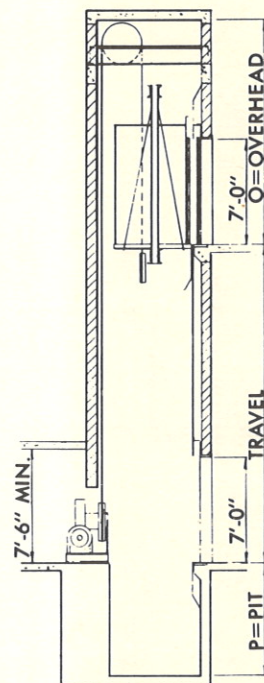
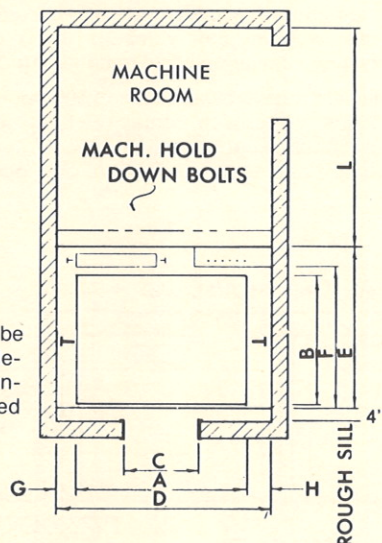


# montgomery® passenger elevators

## basement traction — medium and low speed

Basement traction elevators are utilized for limited overhead conditions in new and existing buildings. This type of elevator facilitates future floor expansion.

Machine room may be placed at side of elevator hoistway if dimension "D" is increased 4".



### 1:1 ROPING ARRANGEMENT

is used when only moderate overhead clearance is available, and only when a shallow pit depth is feasible.

#### RECOMMENDED SIZES & CAPACITIES

TYPE BUILDING	SMALL APART-MENT	SMALL OFFICE	AVERAGE OFFICE HOTEL		LARGE OFFICE OR STORE
CAPACITY	1200#	2000#	2500#	3000#	3500#
A	5'-0"	6'-4"	7'-0"	7'-0"	7'-0"
B	4'-0"	4'-5"	5'-0"	5'-6"	6'-2"
C	2'-6"	3'-0"	3'-6"	3'-6"	3'-10"
D	6'-4"	7'-8"	8'-4"	8'-4"	8'-4"
E	5'-4"	5'-9"	6'-6"	7'-0"	7'-8"
F	4'-5"	4'-10"	5'-5"	5'-11"	6'-7"
G	8"	8"	8"	8"	8"
H	8"	8"	8"	8"	8"

#### RECOMMENDED MACHINE ROOM OVERHEAD & PIT DIMENSIONS

SPEED	100	200	250	300	350
L	9'-6"	12'-0"	12'-0"	12'-0"	12'-0"
*O	16'-7"	17'-1"	17'-5"	17'-6"	17'-9"
P	4'-0"	5'-8"	6'-0"	6'-6"	6'-11"

#### NOTES:

- Pit depths, overhead clearance and penthouse sizes are in accordance with ANSI code requirements. Local codes may vary these requirements.
- Layouts and dimensions shown are for center opening type entrances.
- Consult your Montgomery Representative for specific rec-

### 2:1 ROPING ARRANGEMENT

permits a minimum overhead installation. Because of the sheave arrangement, it is necessary to have a greater pit depth than for a comparable 1:1 installation.

#### RECOMMENDED SIZES & CAPACITIES

TYPE BUILDING	SMALL APART-MENT	SMALL OFFICE	AVERAGE OFFICE HOTEL	
CAPACITY	1200#	2000#	2500#	3000#
A	5'-0"	6'-4"	7'-0"	7'-0"
B	4'-0"	4'-5"	5'-0"	5'-6"
C	2'-6"	3'-0"	3'-6"	3'-6"
D	6'-10"	8'-2"	8'-10"	8'-10"
E	5'-4"	5'-9"	6'-6"	7'-0"
F	4'-5"	4'-10"	5'-5"	5'-11"
G	10"	10"	10"	10"
H	12"	12"	12"	12"

#### RECOMMENDED MACHINE ROOM OVERHEAD & PIT DIMENSIONS

SPEED	100	200	250	300
L	13'-0"	15'-6"	15'-6"	15'-6"
O	12'-10"	13'-0"	13'-5"	13'-6"
P	5'-6"	6'-6"	6'-11"	7'-4"

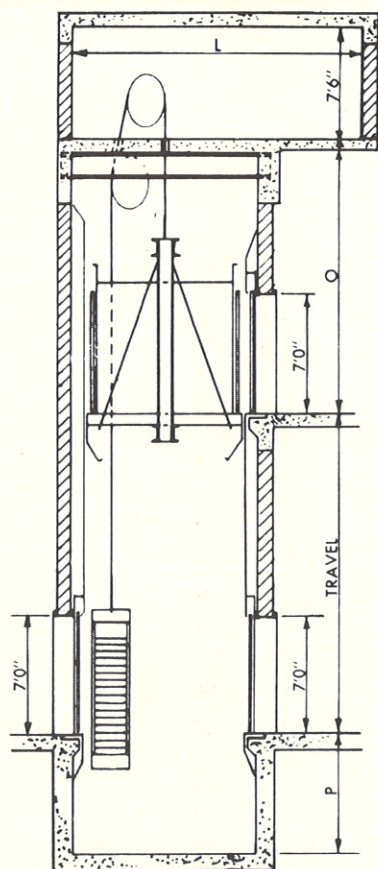
ommendations where space is limited or other conditions may necessitate further study.

- The overhead dimension can be reduced 1'-0" if the cab selected is kept to a minimum height.

- All data is general. Consult your local Montgomery Representative for exact information for your working drawings.

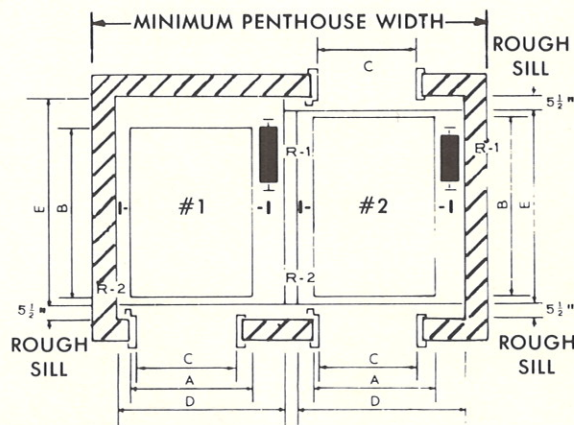


# passenger elevators



## hospital traction

Hospital Traction Elevators are designed in a wide range of speeds for individual applications. Emergency and independent service as well as auxiliary power features are available.



FRONT ONLY, FRONT AND REAR OPENINGS - ONE OR MORE ELEVATORS

### RECOMMENDED SIZES & CAPACITIES

CAPACITY	3500 #		4000 #		5000 #	
	#1	#2	#1	#2	#1	#2
A	5'-4"	5'-4"	5'-8"	5'-8"	6'-4"	6'-4"
B	8'-4"	8'-9 1/2"	8'-8"	9'-1 1/2"	8'-10"	9'-3 1/2"
C	3'-8"	3'-8"	4'-0"	4'-0"	4'-6"	4'-6"
D	7'-5"	7'-5"	7'-9"	7'-9"	8'-5"	8'-5"
E	8'-9"	9'-2"	9'-1"	9'-6"	9'-3"	9'-8"

### MINIMUM PIT, OVERHEAD AND MACHINE ROOM DIMENSIONS

SPEED	75	100	200	350	500
L	21'-0"	21'-0"	21'-0"	21'-0"	27'-6"
O	15'-6"	15'-6"	15'-9"	16'-6"	17'-7"
P (a)	4'-0"	4'-0"	-	-	-
P (b)	-	-	4'-0"	5'-1"	6'-7"
P (c)	-	-	5'-8"	6'-11"	8'-10"

\*P (a) indicates minimum pit required for elevators with type "A" safety.

\*P (b) indicates minimum pit required for elevators with type "B" safety.

\*P (c) indicates minimum pit required for elevators with type "C" safety.

### APPROXIMATE OVERHEAD LOADS IN LBS PER PASSENGER ELEVATOR

CAPACITY	SPEED	R-1	R-2
3500 #	75	19300	13700
	100	19500	14000
	200	23000	15000
	350	27400	16000
	500	33000	23000
4000 #	75	20600	14800
	100	20900	15200
	200	23900	15800
	350	27900	17700
5000 #	500	34000	24000
	200	25600	17300
	350	29500	19600
	500	35200	26000

### NOTES:

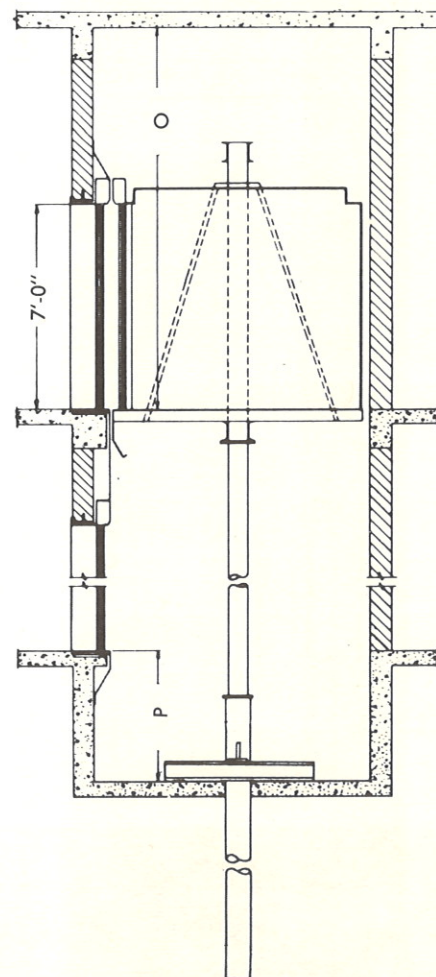
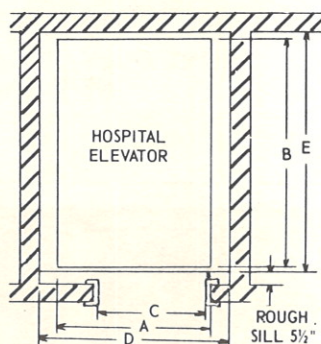
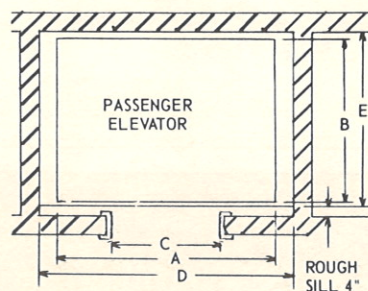
- Reactions include allowances for impact but DO NOT include weight of concrete slab.
- Pit depths, overhead clearance and penthouse sizes are in accordance with ANSI code requirements. Local codes may vary these requirements.
- Layouts and dimensions shown are for two speed type entrances.
- Consult your Montgomery Representative for specific recommendations where space is limited or other conditions may necessitate further study.
- All data is general. Consult your local Montgomery Representative for exact information for your working drawings.



# montgomery<sup>®</sup> passenger elevators

## oil hydraulic

Oil Hydraulic Elevators are designed to meet varying performance requirements with car speeds to 200 feet per minute and maximum travel to 70 feet. They are easily adapted to most low rise buildings and frequently produce economic advantages over hoist rope traction elevators.



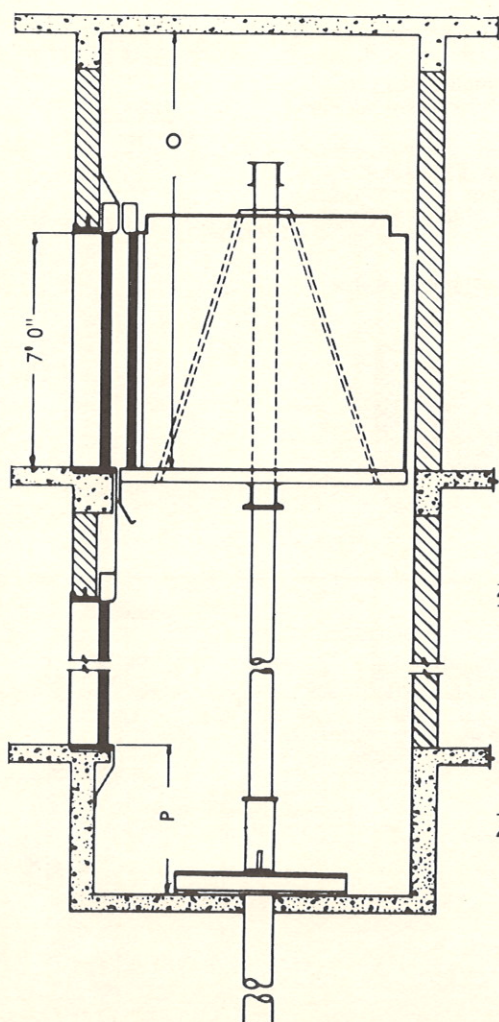
FOR OFFICE BUILDINGS, HOTELS, MOTELS APARTMENTS, BANKS, STORES, LIBRARIES, ETC.						HOSPITALS AND INSTITUTIONS		1 - Single Entrance 2 - Double Entrance				
CAPACITY	1500 #	2000 #	2500 #	3000 #	3500 #	CAPACITY	3500 #	4000 #		5000 #		
							1	2	1	2	1	2
A	5'-4"	6'- 4"	7'-0"	7'- 0"	8'- 0"	A	5'-4"	5'-4"	5'-8"	5'-8"	6'- 4"	6'-4"
B	4'-2"	4'- 5"	5'-0"	5'- 6"	5'- 6"	B	8'-4"	8'-9½"	8'-8"	9'-1½"	8'-10"	9'-3½"
C	2'-8"	3'- 0"	3'-6"	3'- 6"	4'- 0"	C	3'-8"	3'-8"	4'-0"	4'- 0"	4'-6"	4'-6"
D	6'-8"	7'- 8"	8'-4"	8'- 4"	9'- 4"	D	6'-9"	6'-9"	7'-3"	7'-3"	8'- 0"	8'-0"
E	4'-7"	4'-10"	5'-5"	5'-11"	5'-11"	E	8'-9"	9'-2"	9'-1"	9'-6"	9'- 3"	9'-8"
O	13'-0"	13'- 0"	13'-0"	13'- 0"	13'- 0"	O	13'-0"	13'-0"	13'-0"	13'-0"	13'- 0"	13'-0"
P	4'-0"	4'- 0"	4'-0"	4'- 0"	4'- 0"	P	4'-0"	4'-0"	4'-0"	4'-0"	4'- 0"	4'-0"

### NOTES:

- Machine room size varies with car capacity and speed and should be within 20 feet of the hoistway at the lowest landing.
- Pit depths, and overhead clearances are in accordance with ANSI code requirements. Local codes may vary these requirements.
- Layout and dimensions shown for passenger elevators based on center opening type entrances and for hospital elevators based on two speed type entrances.
- Consult your local Montgomery Office for more information regarding Notes 1 and 2.
- All data is general. Consult your local Montgomery Representative for exact information for your working drawings.

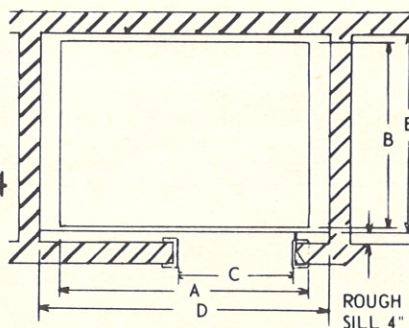


# passenger elevators

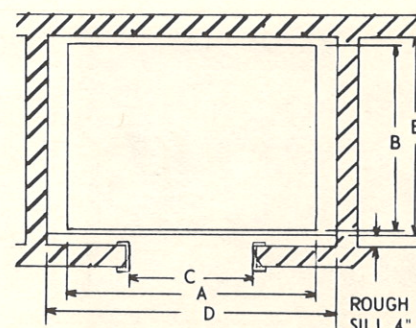


## spm<sup>®</sup> standard pre-manufactured oil hydraulic

SPM Oil Hydraulic Elevators meet Montgomery's high standards of quality. STANDARD equipment is PRE-MANUFACTURED in three sizes, with the advantages of quick delivery, low cost and reliable service. SPM's offer travel to five floors, car speeds to 125 fpm, flexibility in entrance and fixture selection, and optional decor and finishes. Selective collective operation is standard for all SPM elevators.



**PLAN A**  
PASSENGER ELEVATOR  
WITH SINGLE SPEED  
SLIDE ENTRANCES



**PLAN B**  
PASSENGER ELEVATOR  
WITH CENTER  
OPENING SLIDE  
ENTRANCES

### OFFICE BUILDINGS, HOTELS, APARTMENTS, ETC.

HOISTWAY	SPM-1500	SPM-2000	SPM-2500
DIMENSIONS	CAP 1500#	CAP 2000#	CAP 2500#
A	5'-4"	6'-4"	7'-0"
B	4'-2"	4'-5"	5'-0"
C	2'-8"	3'-0"	3'-6"
D	6'-8"	7'-8"	8'-4"
E	4'-7"	4'-10"	5'-5"
O	13'-0"	13'-0"	13'-0"
P	4'-0"	4'-0"	4'-0"

#### NOTES:

- Machine should be adjacent to the hoistway at the lowest landing.
- Pit depth and overhead clearance are in accordance with ANSI code requirements. Local codes may vary these requirements.
- Plan shown is based on single slide entrances. Center opening entrances are also available.

ENTRANCE ARRANGEMENT	SPM-1500	SPM-2000	SPM-2500
PLAN	A	A or B	B

- Dimensions "O" and "P" may be reduced to suit individual project requirements.
- Consult your local Montgomery Office for more information regarding Notes 1, 2, 3, and 4.
- All data is general. Consult your local Montgomery Representative for exact information for your working drawing.
- For complete details ask your local Montgomery Office for SPM brochure SF2043.



# montgomery<sup>®</sup> entrances

Montgomery standard entrances shown are available in a wide range of finishes and materials. Custom entrances are also available. Contact your local Montgomery representative for details.

## single speed slide

**FEATURES** — Maximum opening width approximately  $\frac{1}{2}$  width of car. Opening width should not exceed 3'-6". Provides a sliding door at moderate cost.

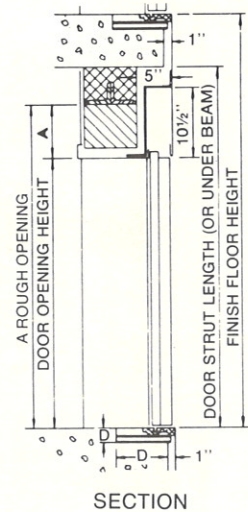
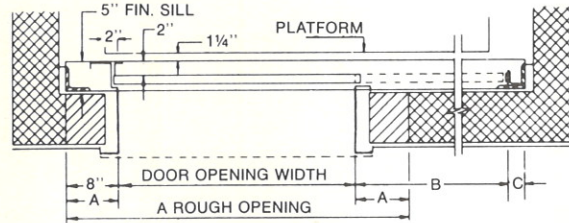
**DIMENSION KEY** — Wherever possible, front hoistway walls should not be erected until after door equipment is installed.

A - Rough openings for standard Unit-type frames to be: Width of door opening plus 8" on each side. Height of door opening plus 8" above.

B - Landing door opening plus  $1\frac{1}{2}$ ".

C - 5" for power operated doors, 3" for manual operated doors.

D - 2" x 8" sill pocket entire width of hatch.



SECTION

## two speed slide

**FEATURES** — Door opening approximately  $\frac{2}{3}$  width of car.

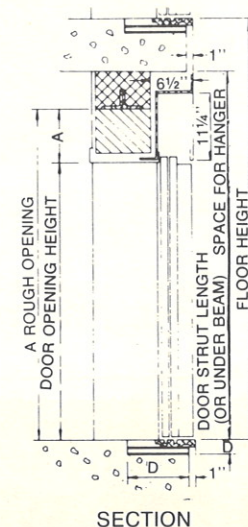
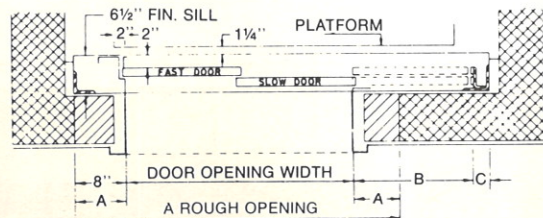
**DIMENSION KEY** — Wherever possible, front hoistway walls should not be erected until after door equipment is installed.

A - Rough openings for standard Unit-type frames to be: Width of door opening plus 8" on each side. Height of door opening plus 8" above.

B -  $\frac{1}{2}$  landing door opening plus  $1\frac{1}{8}$ ".

C - 5" for power and manually operated door.

D - 2" x  $9\frac{1}{2}$ " sill pocket entire width of hatch.



SECTION

## center opening slide

**FEATURES** — Provides opening approximately  $\frac{1}{2}$  width of car. Simultaneous opening of each door panel, at equal speed, reduces opening time to  $\frac{1}{2}$  that required for other types of sliding doors.

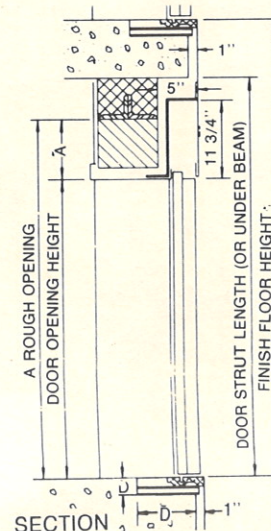
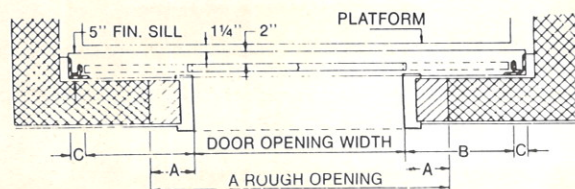
**DIMENSION KEY** — Wherever possible, front hoistway walls should not be erected until after door equipment is installed.

A - Rough openings for standard Unit-type frames to be: Width of door opening plus 8" on each side. Height of door opening plus 8" above.

B -  $\frac{1}{2}$  landing door opening plus  $\frac{3}{4}$ ".

C - 5" for power operated doors, 3" for manual operated doors.

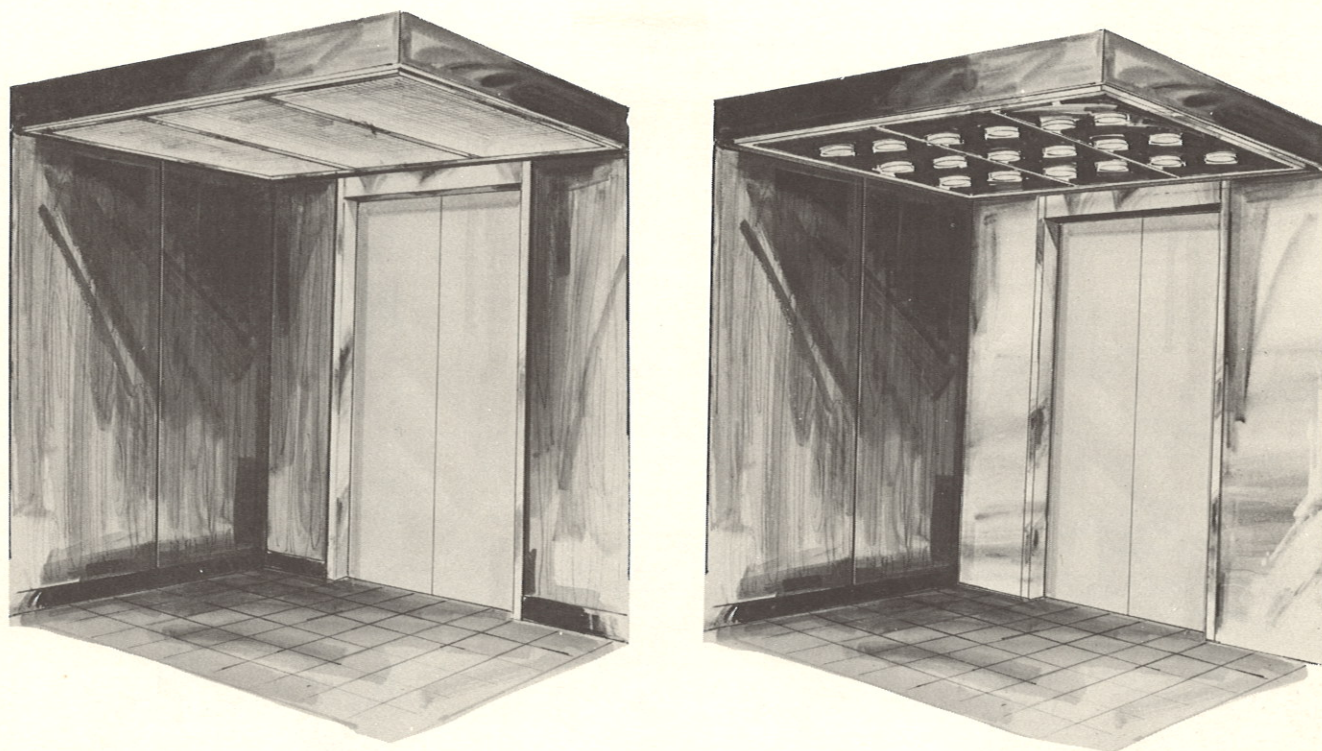
D - 2" x 8" sill pocket entire width of hatch.



SECTION



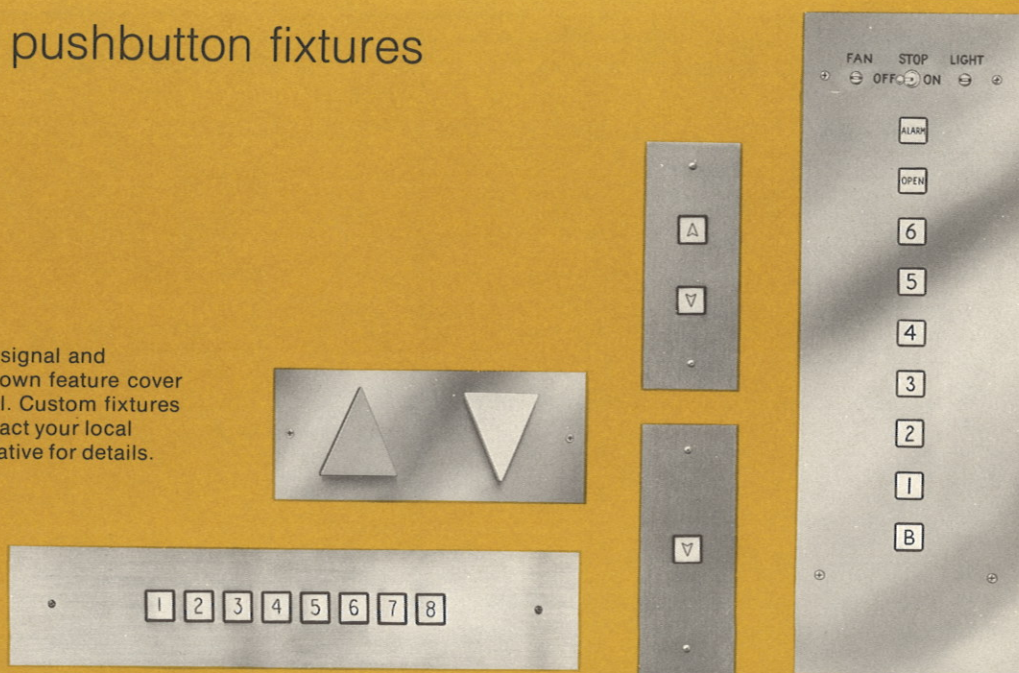
## cars, signals and pushbutton fixtures



Montgomery standard cars are shown. Other standard cars as well as custom cars are available in a wide range of designs and materials. Contact your local Montgomery representative for details.

## signal and pushbutton fixtures

Montgomery standard signal and pushbutton fixtures shown feature cover plates of stainless steel. Custom fixtures are also available. Contact your local Montgomery representative for details.



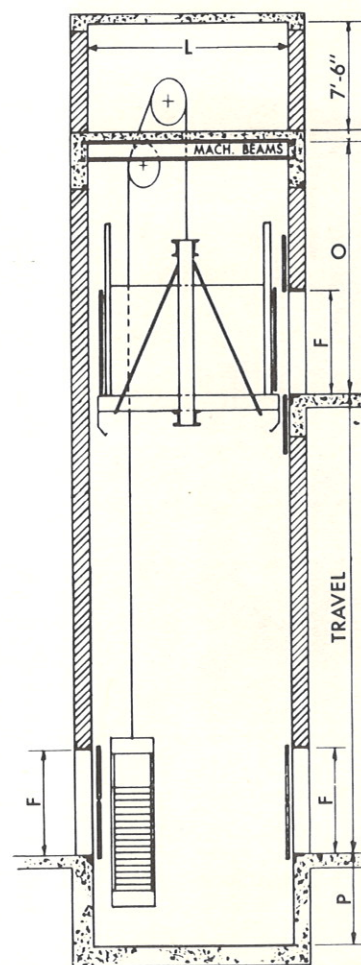
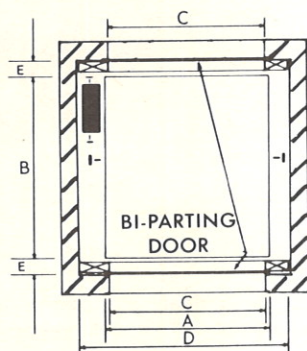
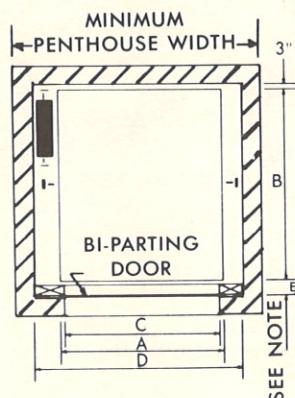


# montgomery<sup>®</sup> freight elevators

## traction

Traction Freight Elevators meet and exceed the heavy duty requirements of freight type loading. Special applications are available to meet unusual and hazardous conditions. As an optional feature we recommend our Lodemaster, an automatic load weighing device, which warns against overloading. Also recommended are power operated hoist-way doors and car gates for medium and heavy duty installations.

For freight door details see page 18



LIGHT AND MEDIUM DUTY FREIGHT ELEVATORS

CAPACITY	2500#	3000#	4000#	6000#	8000#	10,000#
A	5'-4"	6'-4"	6'-4"	8'-4"	8'-4"	10'-4"
B	7'-0"	8'-0"	8'-0"	10'-0"	10'-0"	14'-0"
C	5'-0"	6'-0"	6'-0"	8'-0"	8'-0"	10'-0"
D	7'-4"	8'-4"	8'-4"	10'-4"	10'-10"	12'-10"
L	13'-0"	14'-0"	14'-0"	14'-0"	14'-0"	15'-0"

HEAVY DUTY POWER TRUCK FREIGHT ELEVATORS

CAPACITY	10,000#	12,000#	16,000#	18,000#	20,000#
A	8'-4"	10'-4"	10'-4"	10'-4"	12'-4"
B	12'-0"	14'-0"	14'-0"	16'-0"	20'-4"
C	8'-0"	10'-0"	10'-0"	10'-0"	12'-0"
D	11'-4"	13'-6"	14'-0"	14'-2"	16'-6"
L	14'-0"	15'-0"	15'-0"	17'-0"	21'-0"

MINIMUM PIT & OVERHEAD DIMENSIONS  
FOR LIGHT & MEDIUM DUTY FREIGHT ELEVATORS

CAR SPEED	50	75	100	200
O	16'-0"	16'-0"	16'-0"	16'-0"
P	5'-6"	5'-6"	5'-6"	6'-0"

For minimum pit and overhead dimensions for heavy duty power truck freight elevators consult your Montgomery representative.

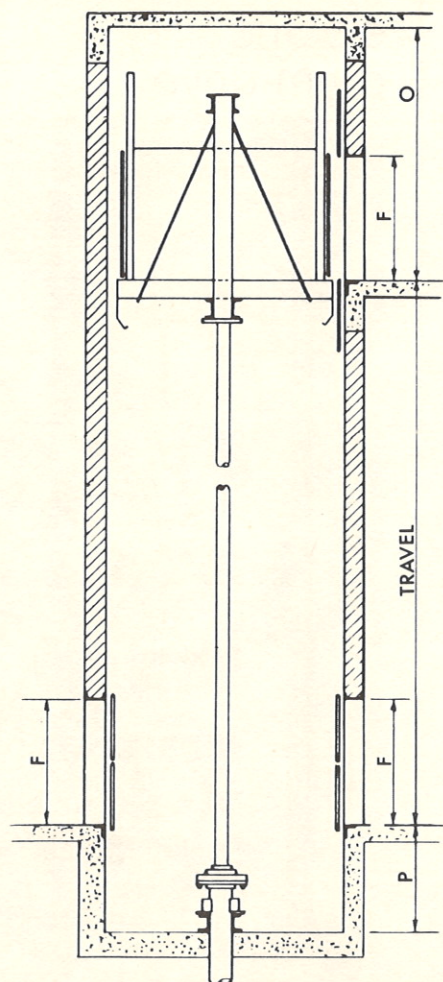
### NOTES:

1. Pit depths, overhead clearance and penthouse sizes are in accordance with ANSI code requirements. Local codes may vary these requirements.
2. For capacities over 20,000 lbs. or speeds over 200 f.p.m., consult your Montgomery Representative.
3. Dimensions E = 5' for regular type counter balanced hoistway doors and 6 3/4" for pass type counter balanced hoistway doors.
4. Pass type hoistway doors are required when floor heights are less than 11'-6" for 7'-3" openings and less than 14'-6" for 9'-3" openings.
5. Dimension F = 7'-0" on light and medium duty; 8'-0" or as required for heavy duty doors. Doors higher than 8'-0" require additional overhead height.
6. For large heavy duty doors consult your Montgomery Representative.
7. All data is general. Consult your local Montgomery Representative for exact information for your working drawings.



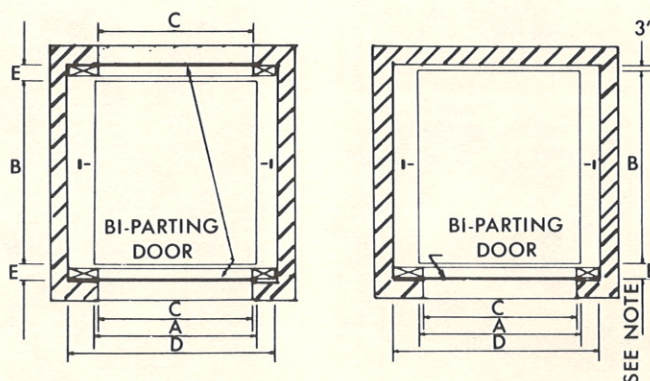
## freight elevators

## oil hydraulic



Oil Hydraulic Freight Elevators are recommended for nominal speed and travel requirements. Features of this type elevator include minimum shaft clearances, economical design of the hoistway, and elimination of the overhead machine room. The recommended machine room location is at the lowest landing adjacent to the hoistway, but can be located in a semi-remote area from the hoistway.

For freight door information see page 18



LIGHT AND MEDIUM DUTY HYDRAULIC FREIGHT ELEVATORS							
CAPACITY	2000#	3000#	4000#	5000#	6000#	7500#	10,000#
A	5'-0"	5'-6"	6'-6"	8'-6"	8'-6"	8'-6"	10'-6"
B	6'-0"	7'-0"	8'-0"	10'-0"	12'-0"	12'-0"	14'-0"
C	4'-8"	5'-2"	6'-2"	8'-2"	8'-2"	8'-2"	10'-2"
D-manual doors	6'-4"	6'-10"	7'-10"	9'-10"	10'-6"	10'-6"	12'-6"
D-power doors	6'-10"	7'-4"	8'-4"	10'-4"	10'-6"	10'-6"	12'-6"
O-7'-0" high doors	13'-2"	13'-2"	13'-2"	13'-2"	13'-2"	13'-2"	13'-2"
O-8'-0" high doors	14'-2"	14'-2"	14'-2"	14'-2"	14'-2"	14'-2"	14'-2"
P	4'-6"	4'-6"	4'-6"	4'-6"	4'-6"	5'-0"	5'-0"

- NOTES:
- Dimensions O and P are based on car speeds up to 150 fpm.
  - Dimension E = 5" for regular type counter balanced hoistway doors and 6 $\frac{3}{4}$ " for pass type counter balanced hoistway doors.
  - Pass type hoistway doors are required when floor heights are less than 11'-6" for 7'-3" openings and less than 14'-6" for 9'-3" openings.
  - Dimension F = 7'-0" on light and medium duty, 8'-0" or as required for heavy duty.
  - Machine room sizes vary with car capacity and speed and should be within 20 feet of the hoistway at the lowest landing.
  - Pit depths, and overhead clearances are in accordance with ANSI code requirements. Local codes may vary these requirements.

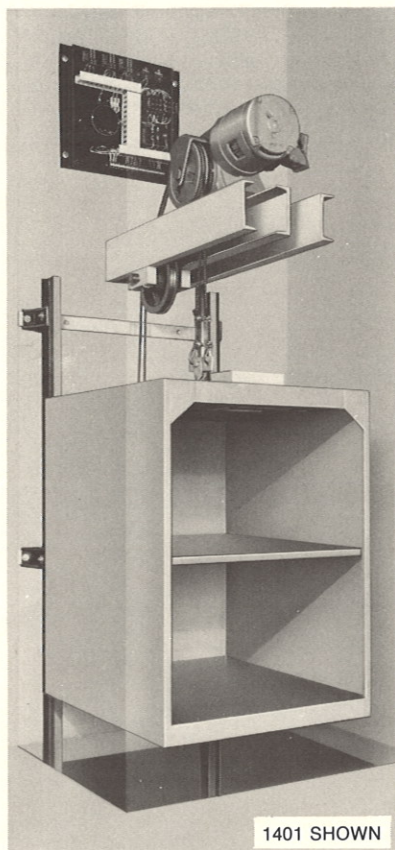
HEAVY DUTY POWER TRUCK HYDRAULIC FREIGHT ELEVATORS					
CAPACITY	10,000#	12,000#	16,000#	18,000#	20,000#
A	10'-6"	10'-6"	10'-6"	10'-6"	12'-6"
B	14'-0"	14'-0"	16'-0"	16'-0"	20'-0"
C	10'-2"	10'-2"	10'-2"	10'-2"	12'-2"
D-manual doors	12'-6"	12'-6"	12'-6"	12'-6"	14'-6"
D-power doors	12'-6"	12'-6"	12'-6"	12'-6"	14'-6"
O-7'-0" high doors	13'-2"	13'-2"	13'-2"	13'-2"	13'-2"
O-8'-0" high doors	14'-2"	14'-2"	14'-2"	14'-2"	14'-2"
P	6'-0"	6'-0"	6'-0"	6'-0"	6'-0"

- Layout and dimensions shown for freight elevators based on bi-parting counter-balanced type hoistway doors.
- Consult your local Montgomery Office for more information regarding Notes 5 and 6.
- For capacities over 20,000 lbs. and for large heavy duty doors, consult your Montgomery Representative.
- All data is general. Consult your Montgomery Representative for exact information for your working drawings.



# montgomery® dumbwaiters

## traction drive

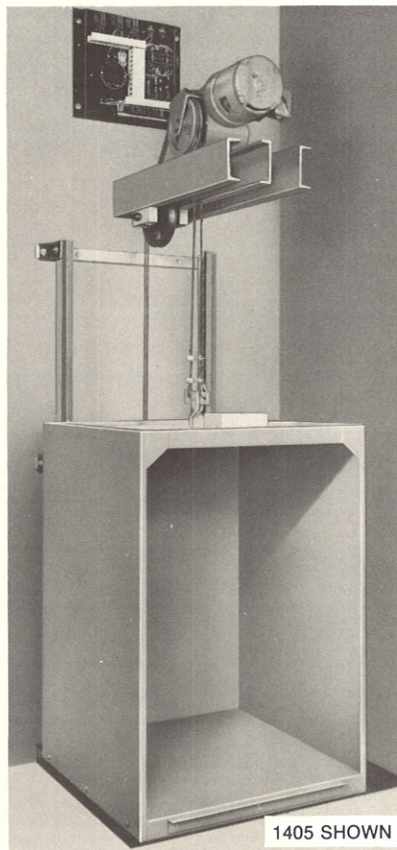


### high speed traction drive

Model 1401 has machine above and Model 1402 has machine below. Designed to take hard use for all high rise projects, these models are top of the line with car speeds from 100 to 150 FPM (and above on request). Capacities from 200 to 500 pounds. Standard operation is automatic call-send.

### moderate speed traction drive

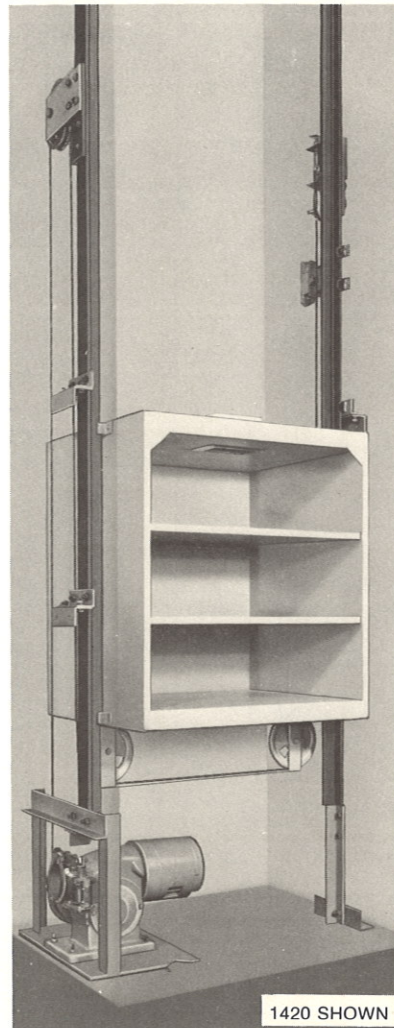
Model 1431 has machine above and Model 1432 has machine below. Satisfies economical speed requirements for 2 to 6 landing projects such as restaurants, apartments, hospitals, hotels, motels, institutions, banks, office buildings. Heavy duty guide rail columns support machine and transmit down load weight to bottom of hoistway. Lifting capacities from 75 pounds to 500 pounds and the car speed is 50 FPM. Standard operation is automatic call-send.



### heavy duty traction drive

Model 1405 has machine above and Model 1406 has machine below adjacent to hoistway. Designed for heavy duty wheeled truck loading. A substitute for small cargo elevators in commercial buildings, industrial buildings, research buildings, piers, warehouses, libraries, dormitory buildings. Lifting capacity up to 500 pounds and car speeds from 50 FPM to 150 FPM. Standard operation is automatic call-send.

## electric drum drive



### moderate speed electric drum drive

Counter Height Loading or Floor Level Loading models are 1420 with the machine below adjacent to hoistway, and 1421 with the machine above. Applicable for all moderate speed requirements up to 35 feet of travel. Ideal for non-load bearing walls. These models support and transmit all down loads to the bottom of the hoistway. Capacities from 150 to 500 pounds and car speed of 50 fpm.

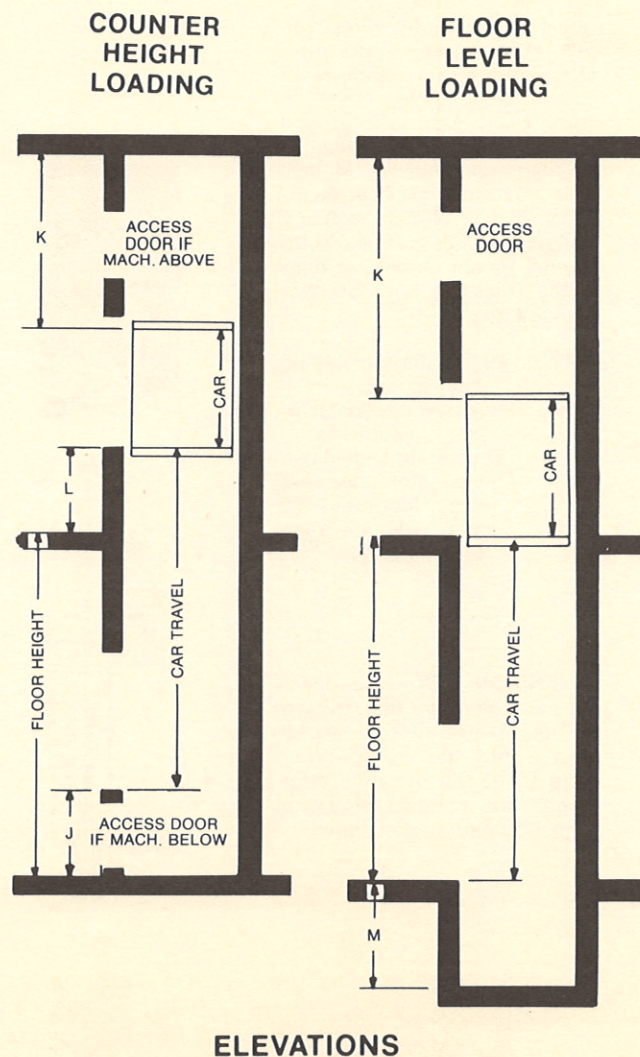
### moderate speed electric drum drive letter lift

Counter Height Loading models 1441 (machine above) and 1442 (machine below). Capacities are 25 and 50 pounds, speed 50 fpm, maximum travel 35'0", standard car size 15" wide, 15" deep, 18" high.

Except for model 1441 and 1442 (letter lift) optional car sizes are available up to 9 square feet of floor area and up to 4'-0" high.

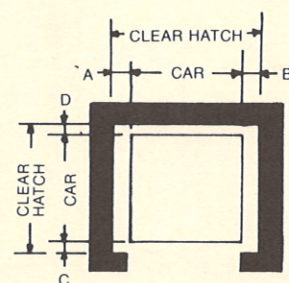


## dumbwaiters



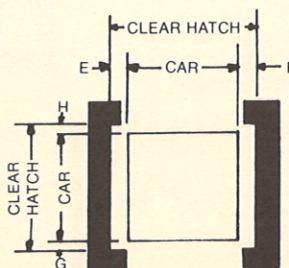
Montgomery Elevator Company has dumbwaiters for every need including electric traction and drum machine models. These dumbwaiters are manufactured to rigid high standards of quality. For more information including available options, write for Montgomery's brochure SF2048.

For details on dumbwaiter entrances, see page 18.



PLAN 1

## PLAN VIEWS



PLAN 2

COUNTER HEIGHT LOADING												
			PLAN 1				PLAN 2					
MODEL NO.	TYPE OF MACHINE	MACHINE LOCATION	OPENINGS FRONT ONLY				OPENINGS FRONT & REAR ELEVATIONS					
			A	B	C	D	E	F	G	H	J	K L M*
1401	Traction	Above	6 1/2	5 1/2	3	6 1/2	6 1/2	5 1/2	3	3	30	54 30 -
1402	Traction	Below	6 1/2	5 1/2	3	6 1/2	6 1/2	5 1/2	3	3	34	42 30 -
1431	Traction	Above	6 1/2	5 1/2	3	3	6 1/2	5 1/2	3	3	30	48 30 -
1432	Traction	Below	6 1/2	5 1/2	3	3	6 1/2	5 1/2	3	3	34	42 30 -
1420	Drum	Below	6	6	3	3	6	6	3	3	34	36 30 -
1421	Drum	Above	6	6	3	3	6	6	3	3	30	48 30 -
1441	Drum	Above	4	4	3	3	4	4	3	3	42	48 42 -
1442	Drum	Below	4	4	3	3	4	4	3	3	42	42 42 -
FLOOR LEVEL LOADING												
1405	Traction	Above	6 1/2	5 1/2	3	6 1/2	6 1/2	5 1/2	3	3	0	54 0 36
1406	Traction	Below*	6 1/2	5 1/2	3	6 1/2	6	6	3	3	0	42 0 36
1420	Drum	Below*	6	6	3	3	6	6	3	3	0	42 0 36
1421	Drum	Above	6	6	3	3	6	6	3	3	0	48 0 36

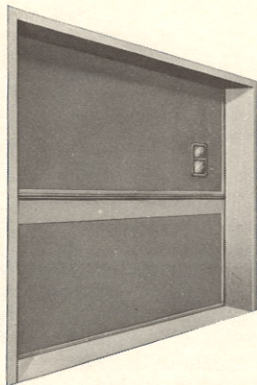
\*Machine below for floor loading dumbwaiter requires the machine to be placed adjacent to the shaftway.

\*\*Floor level loading with slide up doors, M = 12" minimum.

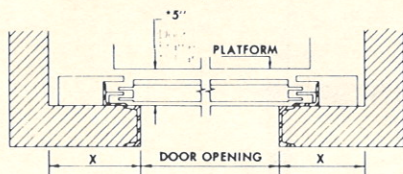
NOTES: Each car gate reduces useable F to B car space by 1 1/2". Dimension K is based on bi-parting car gates and/or doors.



# montgomery® freight doors/ dumbwaiter doors



Regular type

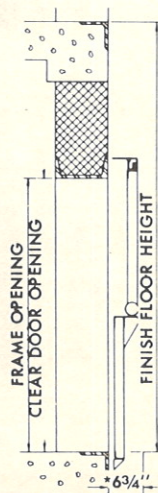
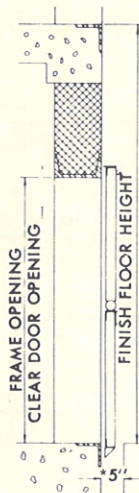
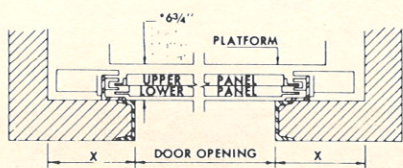


## DIMENSION KEY

X—13" minimum return required for motorized door of either type shown.  
X—9" minimum return required for manual door of either type shown.  
Minimum pit depth  $\frac{1}{2}$  door height plus 6". Door frames must extend to floor beam above unless walls are other than poured concrete or brick.

\*Dimension varies with Manufacturer's requirements.

Pass type

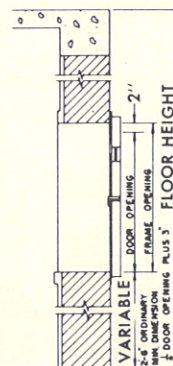
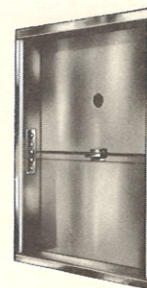


Hoistway entrances carry U/L labels and are bi-parting type with steel frames and sound deadened door panels with glass vision lights. Finish is prime paint. Models 1405 and 1406 have door panels with reinforced truckable sill. Models 1401-1402-1431-1432 have stainless steel sills. Models 1420 and 1421 have stainless steel sills for counter height loading or reinforced truckable sills for floor level loading.

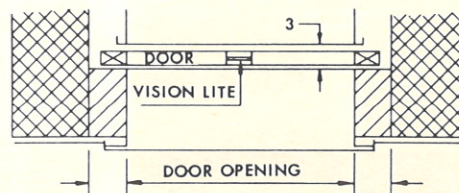
Options: Hollow metal insulated door panels.

Baked enamel or stainless steel finish.

Slide up or slide down type entrances (except Models 1405 and 1406 are slide up type only).



**DIMENSION KEY**—One opening must be larger than the car so the assembled car can be placed into the hatch. Front walls to be left out until door frames are installed. Refer to page 17 for additional data.



MINIMUM FLOOR HEIGHT according to opening height of door		
opening height of door*	regular	pass
6 ft.	9 ft. 6 in.	6 ft. 10 in.
6 ft. 6 in.	10 ft. 3 in.	7 ft. 4 in.
7 ft.	11 ft.	7 ft. 10 in.
7 ft. 6 in.	11 ft. 9 in.	8 ft. 4 in.
8 ft.	12 ft. 6 in.	8 ft. 10 in.
8 ft. 6 in.	13 ft. 3 in.	9 ft. 4 in.
9 ft.	14 ft.	9 ft. 10 in.
10 ft.	15 ft. 6 in.	10 ft. 10 in.
11 ft.	17 ft.	11 ft. 10 in.
12 ft.	18 ft. 6 in.	12 ft. 10 in.
*opening height of frame = clear opening height + 3 in.		

SEE PAGES 16 AND 17  
FOR DUMBWAITER  
DETAILS



# escalators

Escalators move more people at lower cost per passenger than any other form of vertical transportation. They may be the primary carrier in retail buildings, in transportation terminals and in highly populated office buildings, or can effectively augment elevator systems, especially in high rise office buildings.

Operating from main floors to: lower parking levels, mezzanine or second floor shops and restaurants, or top elevator floor to penthouse restaurants. Escalators provide the most efficient transportation in these heavy traffic locations, allowing elevator systems to serve other areas of the building more efficiently.

## EFFICIENCY —

two steps on the same level at entry and exit speeds and safeguards traffic "a montgomery exclusive."

## SAFETY —

more and better safety devices than any other escalator.

## APPEARANCE —

durable modern materials retain attractive appearance.

## LOW COST MAINTENANCE —

attained by high quality equipment.

## DEPENDABILITY —

quickly and easily serviced — less "down" time.



Northbrook Court, Northbrook, Illinois. 4 Crystal 2000 escalators, 4 oil hydraulic freight elevators.

## typical montgomery escalator users



Candlestick Park, San Francisco, California. 6 48" Montgomery escalators, 1 Montgomery traction freight elevator and 2 Montgomery traction passenger elevators.

## RETAIL

Allied Stores Corporation  
Associated Dry Goods Corporation  
Bonwit Teller  
Carter-Hawley Stores  
City Stores Company  
Dayton-Hudson Corporation  
Dillard Department Stores, Inc.  
T. Eaton Company Ltd.  
Federated Department Stores, Inc.  
Hudson Bay Co.  
R.H. Macy and Company, Inc.  
Marshall Field and Company  
May Department Stores Company  
Mercantile Stores, Inc.  
Montgomery Ward and Company  
J.C. Penney Co., Inc.  
Woodward & Lothrop, Inc.  
Woodward Department Stores

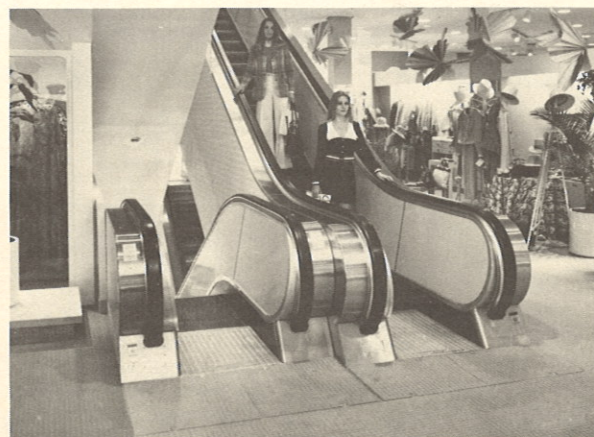
## OFFICE-BANK-HOTEL

Blue Cross-Blue Shield  
Caterpillar Tractor Co.  
Disneyland Hotel  
Ford Motor Company  
General Motors Corporation  
Hilton Hotels Company  
Prudential Plaza  
Sheraton Hotel Corp.

## TRANSPORTATION & PUBLIC

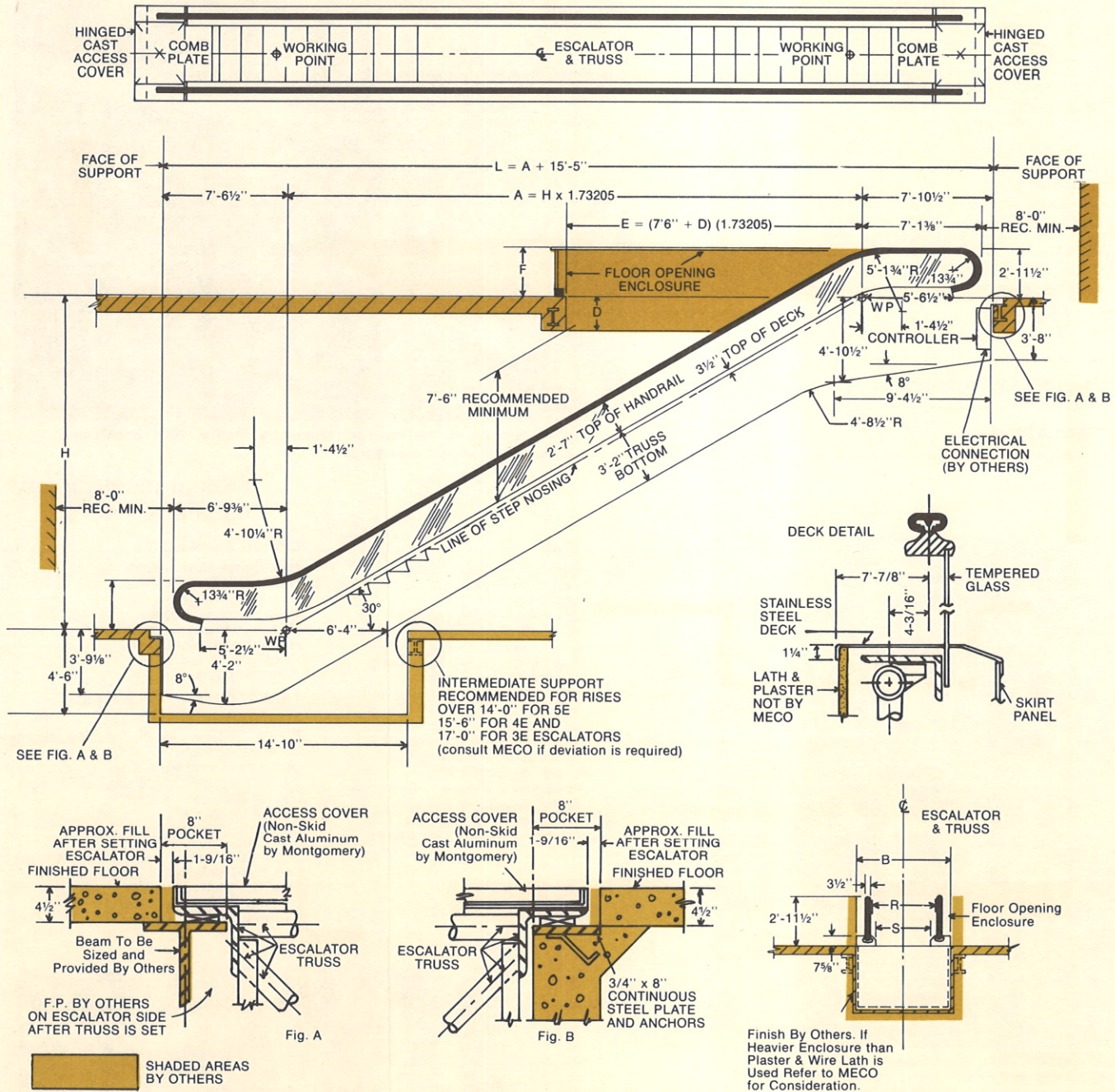
Atlanta International Airport  
Boston Subway, Mass. Transit Authority  
Candlestick Park  
Chicago Transit Authority  
Dallas/Fort Worth International Airport  
Denver Stapleton Airport  
Detroit Cobo Hall  
Honolulu International Airport  
The Louisiana Superdome  
Montreal (Mirabel) International Airport  
San Francisco-Rapid Transit/BARTD  
Sea-Tac International Airport  
Toronto International Airport  
Toronto Transit Commission

Lord & Taylor, Oakbrook Center, suburban Chicago. Montgomery escalators and elevators move people efficiently throughout this beautiful store.





## crystal 2000 glass balustrade

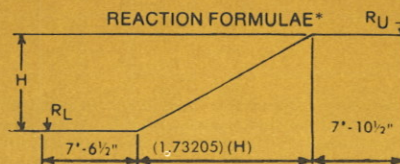


### LAYOUT NOTE:

The following information, when available, must be shown on all layouts for use of the balustrade manufacturer.

D—Dimension from finished floor to the finished plaster ceiling or bottom of smoke guard.

E-F-G—Detail and kind of wellway railings or fire shutter enclosures which are not furnished by the balustrade manufacturer.



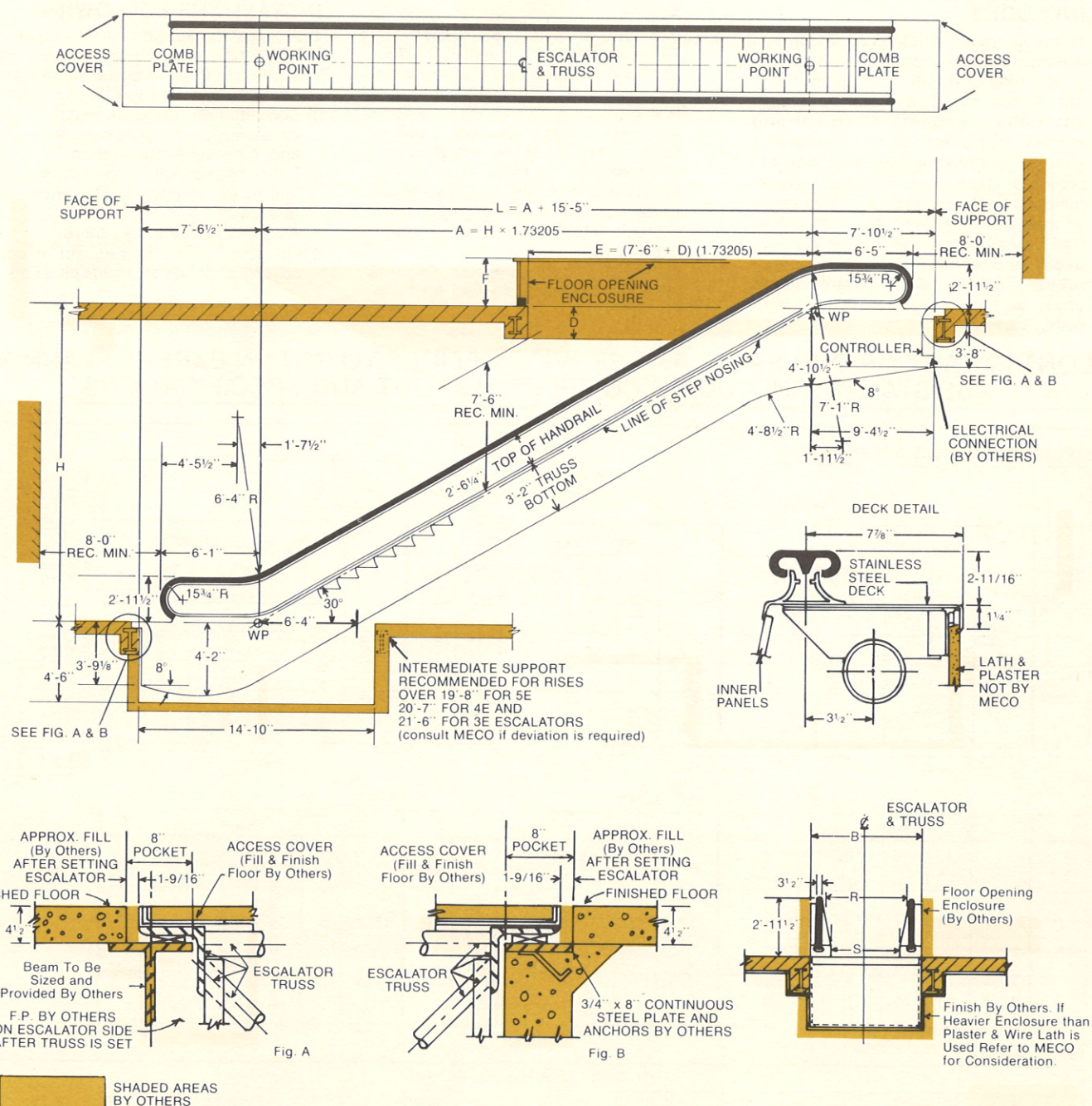
<b>32" ESCALATOR</b>	
RL = (550)H + 10,000	RU = (550)H + 11,100
<b>40" ESCALATOR</b>	
RL = (660)H + 10,570	RU = (660)H + 11,670
<b>48" ESCALATOR</b>	
RL = (660)H + 11,650	RU = (660)H + 12,750

Consult MECO for reactions if intermediate support is used.



# escalators

## solid balustrade



Reaction formulae based on  
 50% dead load  
 25% live load  
 25% impact  
 Includes weight of metal lath and plaster  
 covering on sides and soffit

WIDTH CHART						
Model No	Capacity Per Hour At		Rated Width R	Step Width S	Over-All Width B (Note 1)	Well Width Rough Opening (Note 2)
3E	5 000	6 500	32	24	4-4	Over-All Width B 2
4E	7 000	9 000	40	32	5-0	
5E	8 000	10 000	48	40	5-8	

- NOTES:
1. Includes exterior of lath and plaster by others.
  2. Enclosure between rough opening and finished escalators to be provided by others.



# montgomery<sup>®</sup> escalators

## standard equipment

### STANDARD EQUIPMENT INCLUDES

complete truss fabricated of cold drawn welded steel tubes; precision worm gear drive; roller and ball bearings throughout; flange mounted motor; portable controller; complete electrical and mechanical safety system; reversing stations, interchangeable precision assembled steps with cleated risers; matched endless step chains; accurately aligned track system; complete balustrade including skirts; inner panels, decks and endless moving neoprene rubber handrail; floor access covers to upper and lower machinery well both within truss area.

### REQUIREMENTS

1. Floor around escalator is not to be laid until escalator is installed.
2. Flooring within 8" of escalator floor access doors (top and bottom) is not to be laid until floor access doors are in place.
3. Electric conduits, sprinkler pipes or soffit lights must be installed entirely outside of truss at all points except where codes require sprinkler protection of escalator machinery. Consult Montgomery for location within truss.
4. No walls or other parts of building structure are to be carried on truss.

### OWNER TO PROVIDE AND INSTALL THE FOLLOWING

1. All escalator supports including bearing plates if concrete beams are used.
2. 3 phase, 60 cycle power supply and 110 volt light supply to controller.
3. Combination lamp receptacle and convenience outlet in machine room and lower reversing station.
4. Paper backed wire lath or its equivalent to be used for plaster enclosure of escalator.
5. All items marked "by others."
6. Fill and finish flooring for access covers for solid balustrade escalators.

CONTACT ANY OF OUR SALES AND SERVICE OFFICES TO OBTAIN EXPERT PLANNING ASSISTANCE INCLUDING COMPLETE LAYOUT AND SPECIFICATIONS

### SUGGESTED WIRING ARRANGEMENT

SUGGESTED WIRING ARRANGEMENT

10 H.P.

32" #3E ESCALATOR - 90 FPM

9-10 TO 18-1 FLOOR HEIGHT

40" OR 48" #5E ESCALATOR - 90 FPM

9-10 TO 16-5 FLOOR HEIGHT

	208-220V 3 PHASE 60 CYCLE						440-480V 3 PHASE 60 CYCLE						550-600V 3 PHASE 60 CYCLE					
NO OF ESCALATORS	SWITCH	FUSE SIZE	FUSE-TRON SIZE	BRANCH CIRCUIT & FEEDER	WIRE TYPE RH	CON-DUIT	SWITCH	FUSE SIZE	FUSE-TRON SIZE	BRANCH CIRCUIT & FEEDER	WIRE TYPE RH	CON-DUIT	SWITCH	FUSE SIZE	FUSE-TRON SIZE	BRANCH CIRCUIT & FEEDER	WIRE TYPE RH	CON-DUIT
1	1A M	90 90	45 45	B F1	#6 #6	1" 1"	1A M	45 45	25 25	B F1	#8 #8	3/4 3/4	1A M	40 40	20 20	B F1	#12 #12	1/2 1/2
2	1A-2A M	90 150	45 90	B F2	#6 #2	1" 1 1/4"	1A-2A M	45 70	25 45	B F2	#8 #6	3/4 1	1A-2A M	40 60	20 40	B F2	#12 #10	1/2 1/2
3	1A-2A-3A M	90 175	45 125	B F3	#6 #0	1" 2"	1A-2A-3A M	45 90	25 70	B F3	#8 #4	3/4 1 1/4	1A-2A-3A M	40 80	20 60	B F3	#12 #8	1/2 3/4
4	1A-2A 3A-4A M	90 200	45 175	B F4	#6 #00	1" 2"	1A-2A 3A-4A M	45 100	25 90	B F4	#8 #2	3/4 1 1/4	1A-2A 3A-4A M	40 80	20 80	B F4	#12 #6	1/2 1

15 H.P.

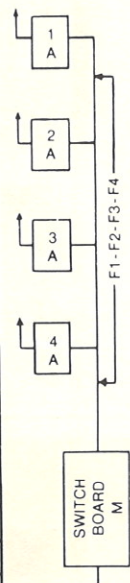
32" #3E ESCALATOR - 90 FPM

18-1 TO 21-4 FLOOR HEIGHT

40" (#4E) OR 48" (#5E) ESCALATOR - 90 FPM

16-5 TO 21-4 FLOOR HEIGHT

	208-220V 3 PHASE 60 CYCLE						440-480V 3 PHASE 60 CYCLE						550-600V 3 PHASE 60 CYCLE					
NO OF ESCALATORS	SWITCH	FUSE SIZE	FUSE-TRON SIZE	BRANCH CIRCUIT & FEEDER	WIRE TYPE RH	CON-DUIT	SWITCH	FUSE SIZE	FUSE-TRON SIZE	BRANCH CIRCUIT & FEEDER	WIRE TYPE RH	CON-DUIT	SWITCH	FUSE SIZE	FUSE-TRON SIZE	BRANCH CIRCUIT & FEEDER	WIRE TYPE RH	CON-DUIT
1	1A M	125 125	60 60	B F1	#4 #4	1 1/4" 1 1/4"	1A M	60 60	30 30	B F1	#6 #6	1" 1"	1A M	50 50	25 25	B F1	#10 #10	3/4 3/4
2	1A-2A M	125 175	60 150	B F2	#4 #0	1" 2"	1A-2A M	60 90	30 70	B F2	#6 #4	1" 1 1/4	1A-2A M	50 80	25 60	B F2	#10 #6	3/4 1
3	1A-2A-3A M	125 250	60 200	B F3	#4 #000	1 1/4" 2"	1A-2A-3A M	60 125	30 90	B F3	#6 #2	1" 1 1/4	1A-2A-3A M	50 100	25 80	B F3	#10 #3	3/4 1 1/4
4	1A-2A 3A-4A M	125 300	60 250	B F4	#4 250 CM	1 1/4" 2 1/2"	1A-2A 3A-4A M	60 150	30 125	B F4	#6 #0	1" 2"	1A-2A 3A-4A M	50 120	25 100	B F4	#10 #1	3/4 1 1/2

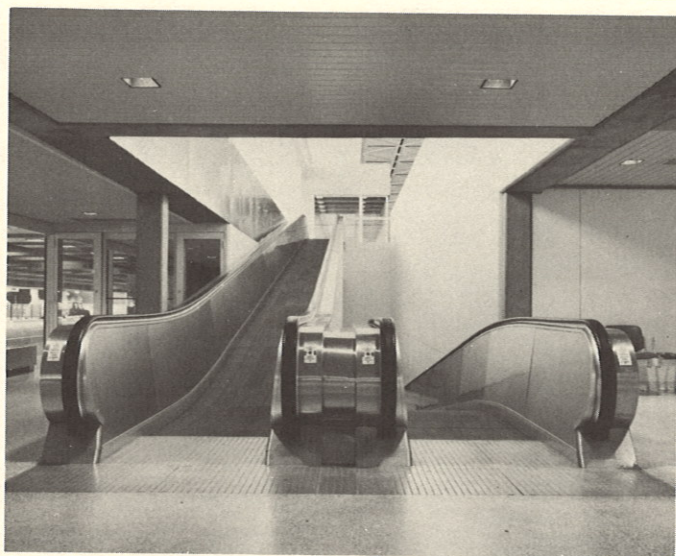


### POWER DATA

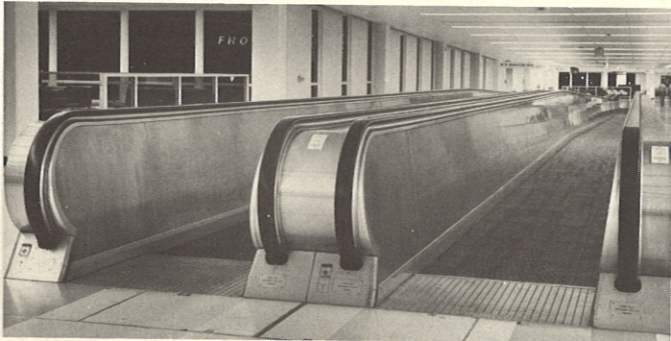
POWER DATA												
FOR 3 PHASE, 60 CYCLE, 90 FPM												
	208 VOLTS		220 VOLTS		440 VOLTS		480 VOLTS		550 VOLTS		600 VOLTS	
HORSE POWER	STARTING CURRENT	RUNNING CURRENT	STARTING CURRENT	RUNNING CURRENT	STARTING CURRENT	RUNNING CURRENT	STARTING CURRENT	RUNNING CURRENT	STARTING CURRENT	RUNNING CURRENT	STARTING CURRENT	RUNNING CURRENT
10	118A	36.2A	112A	34.2A	56A	17.1A	51A	15.6A	45A	13.7A	40.9A	12.5A
15	174A	53.5A	165A	50.6A	83A	25.3A	75A	23.2A	66A	20.2A	60.9A	15.6A
20	242A	72.0A	235A	71.9A	118A	36.0A	101A	31.2A	94A	28.8A	80.0A	24.9A
FOR 3 PHASE, 60 CYCLE, 120 FPM												
	208 VOLTS		220 VOLTS		440 VOLTS		480 VOLTS		550 VOLTS		600 VOLTS	
HORSE POWER	STARTING CURRENT	RUNNING CURRENT	STARTING CURRENT	RUNNING CURRENT	STARTING CURRENT	RUNNING CURRENT	STARTING CURRENT	RUNNING CURRENT	STARTING CURRENT	RUNNING CURRENT	STARTING CURRENT	RUNNING CURRENT
10	116A	27.5A	110A	26.0A	55A	13.0A	50.5A	11.9A	43.5A	10.4A	40.3A	9.6A
15	174A	45.0A	165A	40.5A	82A	20.3A	75.0A	18.6A	66.0A	16.3A	61.0A	14.9A
20	232A	58.0A	219A	54.8A	109A	27.4A	101.0A	25.2A	88.0A	22.0A	80.5A	20.0A



# power walks & ramps



Mirabel International Airport, Montreal, Quebec. 16 Montgomery Power Ramps, 13 Montgomery escalators, 6 Montgomery geared traction elevators, 3 Montgomery hydraulic elevators and 4 Montgomery dumbwaiters.



Stapleton International Airport, Denver, Colorado. 6 Montgomery Power Walks, 6 Montgomery Power Ramps, 16 Montgomery escalators, 14 Montgomery elevators and 2 Montgomery dumbwaiters.

## POWER WALKS AND POWER RAMPS

provide fast safe, high-volume horizontal, or combined horizontal and inclined (to 15 degrees) transportation of people within buildings, or outdoors. Exposition centers, stadiums, auditoriums, transportation terminals, parking lots to buildings and in or out of buildings are a few walk-ramp applications to transport people where walking is not advantageous.

## STANDARD EQUIPMENT INCLUDES

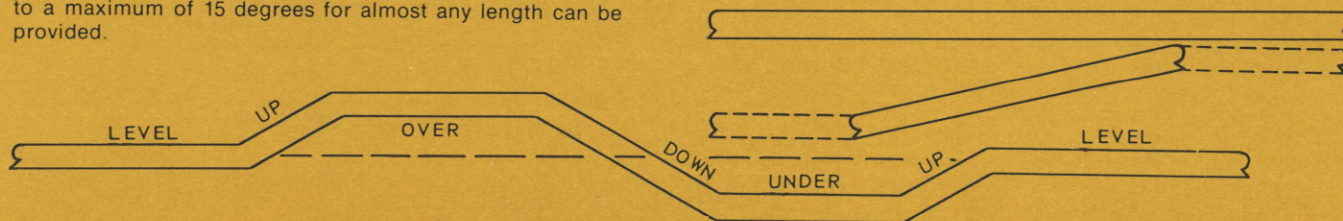
complete truss fabricated of cold drawn welded steel tubes; precision worm gear drive; roller and ball bearings throughout; flange mounted motor; portable controller; complete electrical and mechanical safety system; reversing stations; interchangeable precision assembled treadway pallets with interlocking treads on adjacent pallets; matched endless pallet chains; accurately aligned track system; complete balustrades including inner panels; decks with endless moving neoprene rubber hand rail (color available); and floor access covers to upper and lower machinery wells both within truss area.

## CONSULT MONTGOMERY

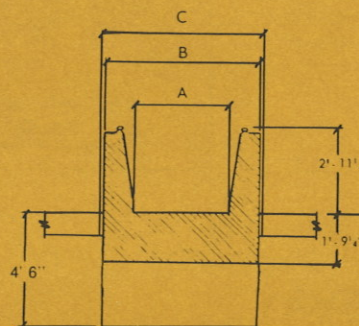
Contact your local Montgomery representative or the Montgomery Elevator Company, Moline, Illinois, for application data, and layout or specification data needed to plan a complete installation.

## PLANNING POWER WALKS/POWER RAMPS

Any arrangement or combination of horizontal and inclines, to a maximum of 15 degrees for almost any length can be provided.



MODEL NO.	TREAD WIDTH	OVERALL WIDTH DECORATOR PANEL OR LATH & PLASTER EXTERIOR COVERING	WELL WIDTH ROUGH OPENING
	<b>A</b>	<b>B</b>	<b>C</b>
3W	24"	4'-4"	OVERALL WIDTH B + 2"
4W	32"	5'-0"	
5W	40"	5'-8"	



## WIDTHS:

Three standard tread widths are 24", 32" and 40". The 24" width accommodates one adult; the 32" width provides ample room for adult and child or adult and shopping cart; the 40" width accommodates two adjacent adults or adult with luggage.



# montgomery®



## preventive maintenance

Montgomery's Preventive Maintenance Program employs service men who are factory trained specialists. They check and inspect all safety devices, electrical controls and make necessary mechanical adjustments — on a regularly scheduled basis under competent technical supervision. A complete record of each equipment installation is kept. In the event of a breakdown, prompt service and complete repair is guaranteed. Montgomery's PM program provides the finest service at lower costs.

## sales/service offices

### UNITED STATES

**Alabama**  
Birmingham  
Mobile  
Montgomery  
**Alaska**  
Anchorage  
**Arizona**  
Phoenix  
Tucson  
**Arkansas**  
Little Rock  
**California**  
Fresno (Valley Elev. Co.)  
Long Beach  
Los Angeles  
Modesto (Valley Elev. Co.)  
Palm Springs  
Riverside  
Sacramento (Valley Elev. Co.)  
San Diego  
San Francisco  
San Jose  
Santa Maria  
**Colorado**  
Colorado Springs  
Denver  
Greeley  
**Connecticut**  
Hartford (General Elev. Co.)  
**Delaware**  
Wilmington (General Elev. Co.)  
**District of Columbia**  
Washington, D.C.  
**Florida**  
Daytona Beach  
Ft. Lauderdale  
Ft. Myers  
Gainesville  
Jacksonville  
Lakeland  
Miami  
Orlando  
Pensacola  
St. Petersburg  
Tallahassee  
Tampa  
West Palm Beach  
**Georgia**  
Atlanta  
Macon  
**Hawaii**  
Hilo (Amelco Elev. Co.)  
Honolulu (Amelco Elev. Co.)  
Wailuku (Amelco Elev. Co.)  
**Illinois**  
Bloomington  
Chicago  
Dixon  
Galesburg  
Joliet  
LaSalle  
Moline  
Peoria  
Quincy (Wagner Elev. Serv., Inc.)  
Rock Island  
Rockford (Lamps Elev. Sales & Serv.)  
Springfield  
**Indiana**  
Fort Wayne (Early Elev. Corp.)  
Indianapolis  
Kokomo (Early Elev. Corp.)  
Muncie  
South Bend (Early Elev. Corp.)  
**Iowa**  
Burlington (Wagner Elev. Serv., Inc.)  
Cedar Rapids  
Clinton  
Des Moines (Chenoweth Kern Elev. Serv.)  
Ottumwa (Wagner Elev. Serv., Inc.)  
Sioux City (Carter Elev. Co., Inc.)  
Waterloo  
**Kansas**  
Hayes  
Pittsburg  
Topeka  
**Kentucky**  
Louisville (Southern Elev. Sales & Serv.)  
**Louisiana**  
Baton Rouge  
Lafayette  
New Orleans  
**Maryland**  
Annapolis  
Baltimore (General Elev. Co., Inc.)  
Cumberland (General Elev. Co., Inc.)  
Hagerstown (General Elev. Co., Inc.)  
**Massachusetts**  
Boston  
Worcester (Consolidated Elev. Co.)  
**Michigan**  
Ann Arbor  
Benton Harbor  
Detroit  
Flint  
Grand Rapids  
Lansing  
Muskegon  
Traverse City  
**Minnesota**  
Minneapolis-St. Paul  
**Mississippi**  
Gulfport  
Hattiesburg  
Meridian  
**Missouri**  
Columbia  
Jefferson City  
Joplin  
Kansas City  
St. Joseph  
St. Louis (Eberius Elev. Co.)  
**Montana**  
Billings  
Butte  
Great Falls  
Helena  
Missoula  
**Nebraska**  
Lincoln  
Omaha  
**Nevada**  
Las Vegas  
Reno (Valley Elev. Co.)  
**New Jersey**  
Atlantic City  
Camden (General Elev. Co., Inc.)  
Kenilworth (General Elev. Co., Inc.)  
**New Mexico**  
Albuquerque  
**New York**  
Albany (Irwin Elev. Co., Inc.)  
Buffalo (Gallagher Elev. Co., Inc.)  
Ithaca  
Long Island City (Staley Elev. Co.)  
Massena (Midstate Elev. Co., Inc.)  
New York  
Oswego (Midstate Elev. Co., Inc.)  
Poughkeepsie (Sedgwick Mach. Works Inc.)  
Syracuse (Midstate Elev. Co., Inc.)  
Utica (Midstate Elev. Co., Inc.)  
Watertown (Midstate Elev. Co., Inc.)  
**Ohio**  
Akron  
Cincinnati  
Cleveland  
Columbus  
Dayton  
Toledo  
**Oklahoma**  
Oklahoma City  
Stillwater  
Tulsa  
**Oregon**  
Eugene  
Portland  
**Pennsylvania**  
Allentown (General Elev. Co., Inc.)  
Harrisburg

Philadelphia (General Elev. Co., Inc.)  
(Energy Elev. Co.)

Lancaster  
Reading (General Elev. Co., Inc.)  
Scranton (Grindel Elev. Co.)  
Windber (Eastern Elev. Serv. & Sales)  
Wilkes-Barre (General Elev. Co., Inc.)

### PUERTO RICO

San Juan  
**South Dakota**  
Aberdeen (Carter Elev. Co., Inc.)  
Rapid City (Carter Elev. Co., Inc.)  
Sioux Falls (Carter Elev. Co., Inc.)  
**Tennessee**  
Nashville (Capitol City Elev. Co., Inc.)

Knoxville

Memphis

### Texas

Amarillo  
Austin  
Beaumont  
Corpus Christi  
Dallas  
El Paso  
Fort Worth  
Houston  
Lubbock  
Odessa  
San Antonio  
Tyler

### Utah

Salt Lake City

### Vermont

Burlington

### Washington

Bremerton  
Seattle  
Spokane  
Tacoma  
Yakima  
**Wisconsin**  
Green Bay  
Madison (Braun Elec. & Elev., Inc.)  
Milwaukee  
**Wyoming**  
Casper  
Cheyenne

### CANADA

#### Alberta

Calgary

Edmonton

#### British Columbia

Kelowna

Nanaimo

Prince George

Vancouver

Victoria

#### Manitoba

Winnipeg (Western Elev. & Motor Co., Ltd.)

#### Ontario

Barrie

Hamilton

Kingston

Kitchener

London

North Bay

Ottawa

Peterborough

St. Catharines

Toronto

Windsor

#### Quebec

Hull

Montreal

Quebec

#### MARITIME PROVINCES

St. John, New Brunswick

(E. S. Stephenson & Co., Ltd.)

#### GUAM

Agana

#### PHILIPPINES

Manila

Check the Yellow Pages for the nearest Montgomery location or call our national headquarters  
Area Code 309-764-6711. We're not very far from anywhere in North America.

# montgomery®

## ELEVATORS/ESCALATORS POWER WALKS & RAMPS

Montgomery Elevator Company, Moline, Illinois 61265  
Montgomery Elevator Co. Limited, Toronto, Ontario M9B3S5  
Offices in principal cities of North America