




montgomery®

DUMBWAITERS

ELECTRIC TRACTION & DRUM MACHINE MODELS



HIGH SPEED TRACTION DRIVE

COUNTER HEIGHT LOADING

Model 1401 — Machine Above

Model 1402 — Machine Below

APPLICATIONS

For all high rise projects.

FEATURES

Designed to take hard use, these models are top of the line with car speeds to 150 FPM (and above upon request).

LIFTING CAPACITIES:

200 lbs., 300 lbs., 400 lbs., 500 lbs.

CAR SPEEDS:

100 FPM with single speed motor and control.

150 FPM with two speed motor and control.

Higher speeds available upon request.

STANDARD CAR SIZES:

WIDTH X DEPTH X HEIGHT

24" x 20" x 36" for 200 lbs. capacity

30" x 24" x 42" for 300 lbs. capacity

36" x 30" x 48" for 400 lbs. capacity

36" x 36" x 48" for 500 lbs. capacity

Car sizes are optional up to 9 square feet of floor area and up to 4'0" height.

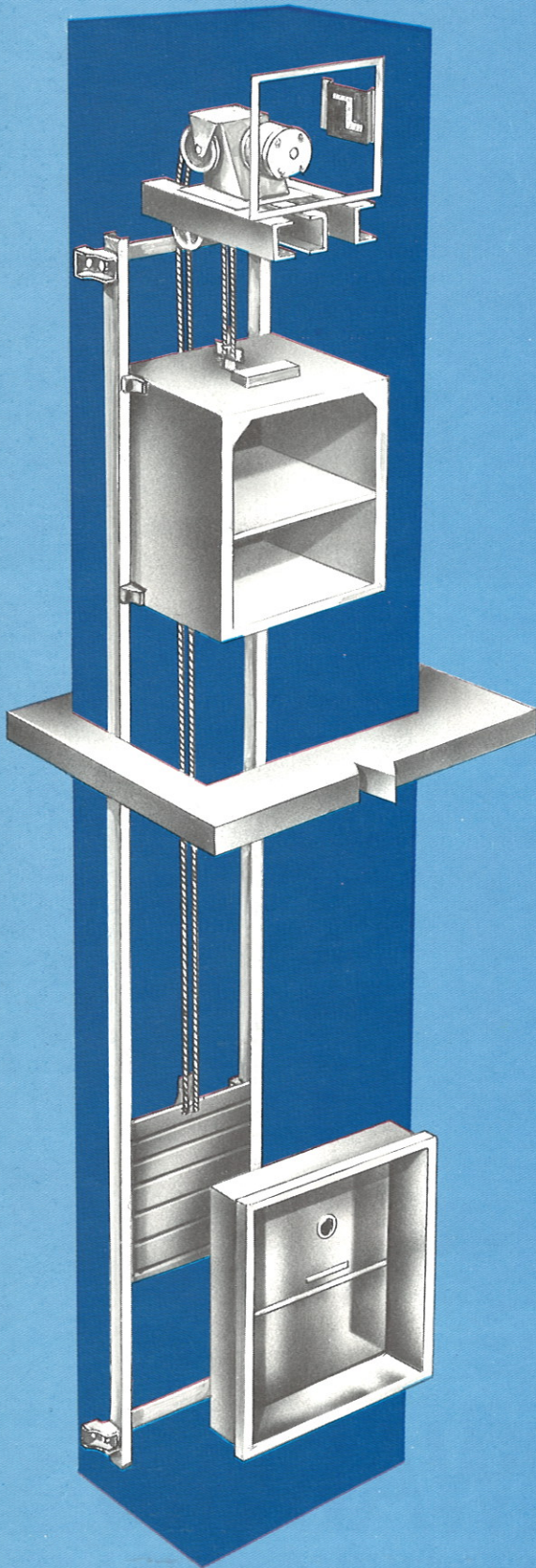
CAR is steel with enamel finish, except car shelf and car bottom loading surfaces are stainless steel. A car light is furnished.

STANDARD OPERATION is automatic call-send from a full bank of buttons numbered for each floor served and located at each floor opening served.

HOISTWAY ENTRANCES carry U/L labels and are bi-parting type with steel frames, stainless steel sills and sound deadened door panels with glass vision lights. Finish is prime paint.

MACHINE ACCESS DOOR: Size 24" x 24" with U/L label is furnished. Finish is prime paint.

3 PHASE POWER is required.



OPTIONS FOR MODELS

CAR — Available in all stainless steel finish. Optional number of shelves.

CAR GATE — Bi-parting or slide-up type with finish to match car.

SAFETIES — For car and counterweight when required by code.

OPERATION — Central station dispatch with home landing return.

SIGNALS — In Use - Door open lights in pushbutton stations. Car arrival lights



MODERATE SPEED TRACTION DRIVE

COUNTER HEIGHT LOADING

Model 1431 — Machine Above

Model 1432 — Machine Below

APPLICATIONS

Satisfies economical speed requirements for 2 to 6 landing projects such as restaurants, apartments, hospitals, hotels, motels, institutions, banks, office buildings. For higher speeds and/or additional floors see models 1401-1402.

FEATURES

Heavy duty guide rail columns support machine and transmit down load weight to bottom of hoistway.

LIFTING CAPACITIES:

75 lbs., 150 lbs., 300 lbs., 500 lbs.

CAR SPEED: 50 FPM

STANDARD CAR SIZES:

WIDTH X DEPTH X HEIGHT

16" x 20" x 24" for 75 lbs. capacity

20" x 24" x 30" for 150 lbs. capacity

24" x 30" x 36" for 300 lbs. capacity

30" x 36" x 42" for 500 lbs. capacity

Car sizes are optional up to 9 square feet of floor area and up to 4'0" height.

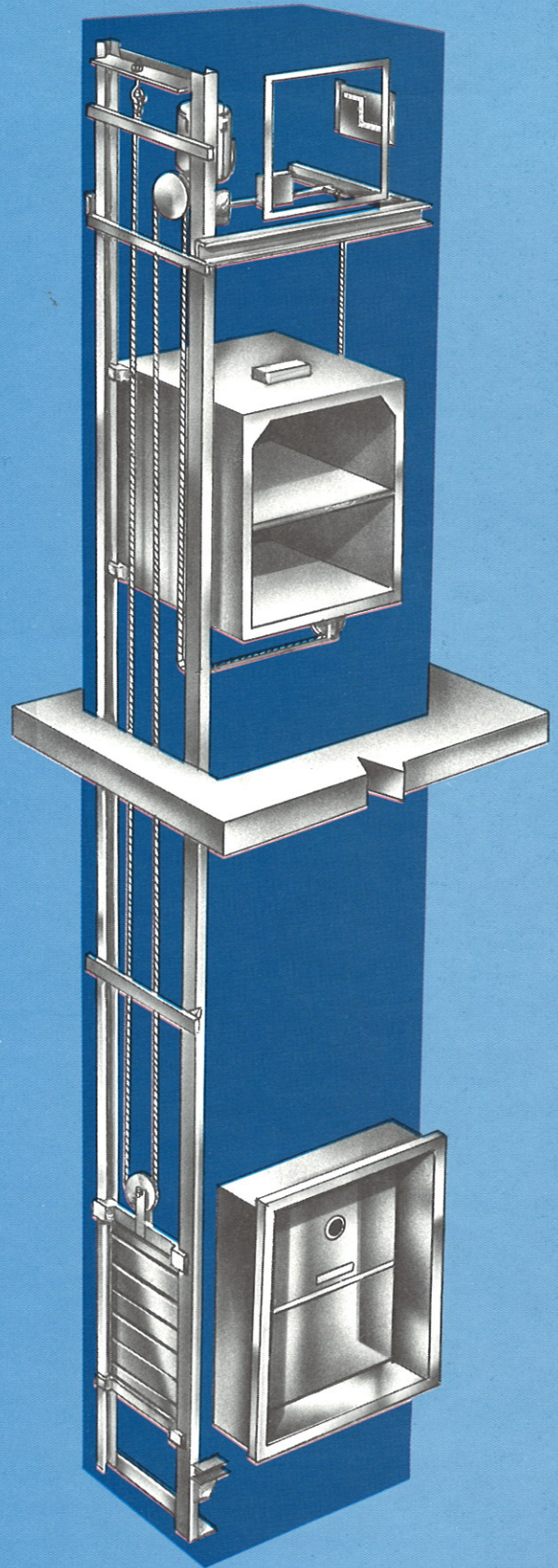
CAR is steel with enamel finish. A car light is furnished.

STANDARD OPERATION is automatic call-send from a full bank of buttons numbered for each floor served and located at each floor opening served.

HOISTWAY ENTRANCES carry U/L labels and are bi-parting type with steel frames, stainless steel sills and sound deadened door panels with glass vision lights. Finish is prime paint.

MACHINE ACCESS DOOR: Size 24" x 24" with U/L label is furnished. Finish is prime paint.

ELECTRIC POWER: These models are available for operation on 220/440 volts, 3 phase power, 60 hertz OR on 115/230 volts, single phase power.



MODEL 1431 SHOWN

1401-1402 AND 1431-1432

(and chime) over hoistway entrances.
Door open buzzer on car.

KEY OPERATED BUTTONS

AUTOMATIC HOME STATION RETURN

RETIRING CAM AND INTERLOCKS — When required by code.

HOISTWAY ENTRANCES — Slide-up or slide-down type. Hollow metal insulated door panels. Baked enamel or stainless steel finish.

ACCESS DOOR — In stainless steel finish.



HEAVY DUTY TRACTION DRIVE

FLOOR LEVEL LOADING

Model 1405 — Machine Above

Model 1406 — Machine Below Adjacent to Hoistway

APPLICATIONS

Designed for wheeled truck loading. A substitute for small cargo elevators in commercial buildings, industrial buildings, research buildings, piers, warehouses, libraries, dormitory buildings.

FEATURES

These models are of exceptionally rugged design for heavy duty floor level loading.

MODEL 1406 (Machine Below) must be placed adjacent to the hoistway.

PIT IS REQUIRED for these models.

LIFTING CAPACITY up to 500 lbs.

CAR SPEEDS:

50 FPM with a single speed motor and control

100 FPM with two speed motor and control

150 FPM with two speed motor and control

STANDARD CAR SIZES:

WIDTH X DEPTH X HEIGHT

30" x 42" x 48"

36" x 36" x 48"

Car sizes are optional up to 9 square feet of floor area and up to 4'0" height.

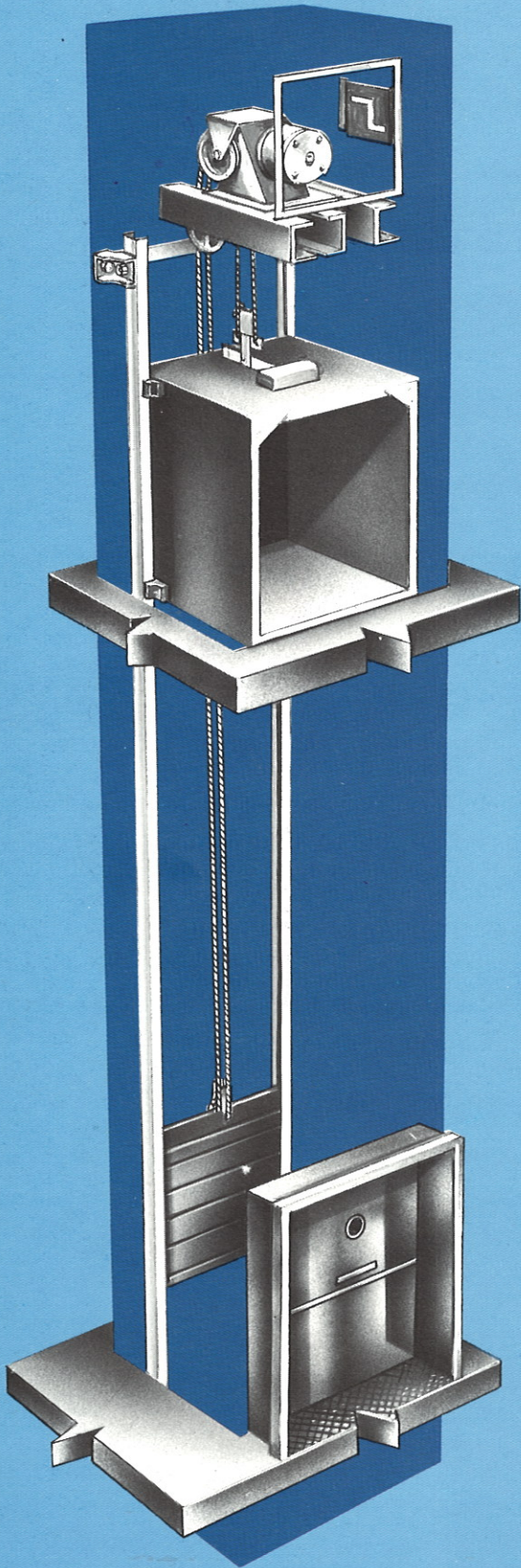
CAR is steel with enamel finish. A car light is furnished.

STANDARD OPERATION is automatic call-send from a full bank of buttons numbered for each floor served and located at each floor opening served.

HOISTWAY ENTRANCES carry U/L labels and are bi-parting type with steel frames and sound deadened door panels with reinforced truckable sill and glass vision lights. Finish is prime paint.

MACHINE ACCESS DOOR: Size 24" x 24" with U/L label is furnished. Finish is prime paint.

3 PHASE POWER is required.



MODEL 1405 SHOWN

OPTIONS FOR MODELS 1405

CAR — Available in all stainless steel finish. Models 1420 and 1421 have optional number of shelves.

CAR GATE — Bi-parting or slide up type with finish to match the car.

SAFETIES — Models 1405 and 1406: for car and counterweight when required by code. Models 1420-1421-1422 and 1423 for car when required by code.

OPERATION — Models 1420-1421-1422 and 1423 central station dispatch with home landing return.

SIGNALS — In Use - Door open lights in pushbutton sta-



MODERATE SPEED ELECTRIC DRUM DRIVE

COUNTER HEIGHT LOADING

Model 1420 — Machine Below

Model 1421 — Machine Above

FLOOR LEVEL LOADING

Model 1422 — Machine Below Adjacent to Hoistway

Model 1423 — Machine Above

APPLICATIONS

All moderate speed requirements up to 35 feet of travel. Available for counter height level or floor level loading installation.

FEATURES

Ideal for non-load bearing walls. These models support and transmit all down loads to the bottom of the hoistway.

MAXIMUM TRAVEL is 35'0".

MODEL 1422 (Machine Below) when used for floor level loading must have machine placed adjacent to hoistway.

PIT IS REQUIRED when these models are used for floor level loading.

LIFTING CAPACITIES:

150 lbs., 300 lbs., 500 lbs.

CAR SPEED is 50 FPM

STANDARD CAR SIZES:

WIDTH X DEPTH X HEIGHT

24" x 20" x 36" for 150 lbs. capacity

30" x 24" x 36" for 300 lbs. capacity

36" x 30" x 36" for 500 lbs. capacity

Car sizes are optional up to 9 square feet of floor area and up to 4'0" height.

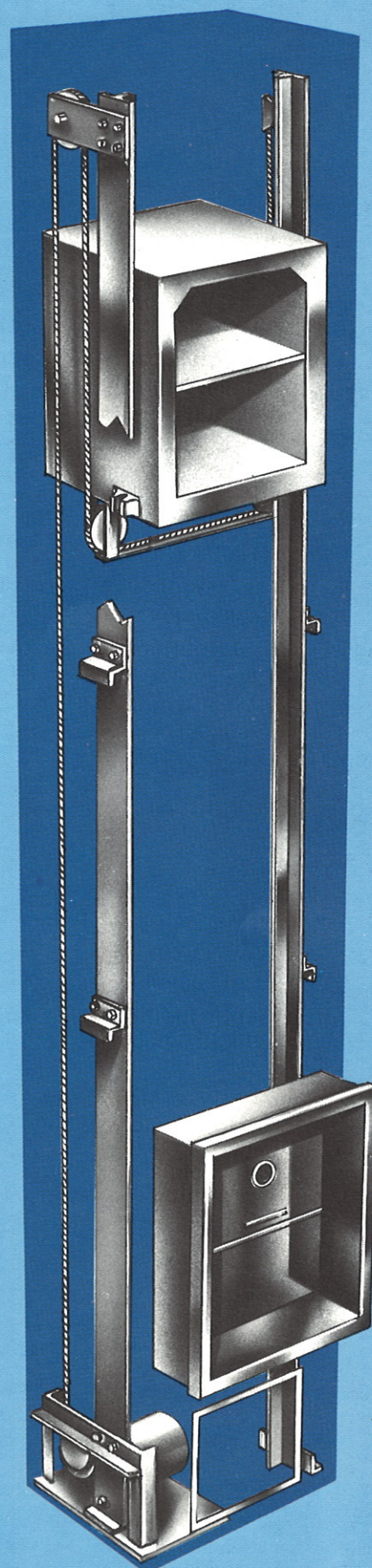
CAR is steel with enamel finish. A car light is furnished.

STANDARD OPERATION is automatic call-send from a full bank of buttons numbered for each floor served and located at each floor opening served.

HOISTWAY ENTRANCES carry U/L labels and are bi-parting type with steel frames and sound deadened door panels with glass vision lights. Stainless steel sills for counter height loading or reinforced truckable sills for floor level loading are furnished. Finish is prime paint.

MACHINE ACCESS DOOR: Size 24" x 24" with U/L label is furnished. Finish is prime paint.

3 PHASE POWER is required.



MODEL 1420 SHOWN

1406, 1420-1421-1422 and 1423

tions. Car arrival lights (and chime) over hoistway entrances. Door open buzzer on car.

KEY OPERATED BUTTONS

AUTOMATIC HOME STATION RETURN

RETIRING CAM AND INTERLOCKS — When required by code.

HOISTWAY ENTRANCES of the slide up type. (Models 1420 and 1421 have slide up or slide down hoistway entrances.) With hollow metal insulated door panels in baked enamel or stainless steel finish.

ACCESS DOOR — In stainless steel finish.

MODERATE SPEED ELECTRIC DRUM DRIVE LETTER LIFT

COUNTER HEIGHT LOADING

Model 1441 — Machine Above

Model 1442 — Machine Below

APPLICATION

For letters and legal size documents and light cargo for banks, office buildings and hospitals.

FEATURES

Self supporting, all down loads are carried on guide rail columns.

MAXIMUM TRAVEL is 35'0".

LIFTING CAPACITIES:

25 lbs. and 50 lbs.

CAR SPEED: 50 FPM

CAR SIZE:

15" x 15" x 18" high

20" x 20" x 18" high (max.)

STANDARD OPERATION is automatic call-send from a full bank of buttons numbered for each floor served and located at each floor opening served.

CAR is steel with enamel finish. A car light and a removable file retainer are furnished.

HOISTWAY ENTRANCES carry U/L labels and are bi-parting type with steel frames and sound deadened door panels with stainless steel sills, glass vision lights. Finish is prime paint.

MACHINE ACCESS DOOR with U/L label is furnished. Finish is prime paint.

ELECTRIC POWER: These models are available for operation on 220/440 volts, 3 phase power or on 115/230 volts single phase power.

OPTIONS FOR MODELS

1441 and 1442:

CAR — Available in all stainless steel finish.

SIGNALS — In Use - Door open lights in pushbutton stations. Car arrival lights (and chime) over hoistway doors. Door open buzzer on car.

KEY OPERATED BUTTONS

AUTOMATIC HOME STATION RETURN

HOISTWAY ENTRANCES — Slide up or slide down type. Hollow metal insulated door panels.

Baked enamel or stainless steel finish.

CAR GATE — Bi-parting with finish to match car.

ACCESS DOOR — In stainless steel finish.

SAFETIES — For car when required by code.

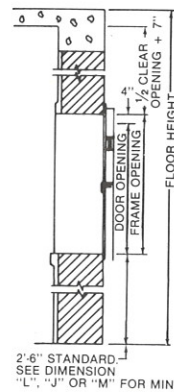
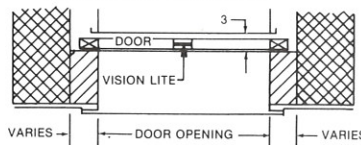
DUMBWAITER DOORS



Dumbwaiter doors carry U/L labels and are bi-parting type with steel frames and sound deadened door panels with glass vision lights. Finish is prime paint.

Options: Hollow metal insulated door panels. Stainless steel sills. Baked enamel or stainless steel finish. Slide up or slide down type entrances.

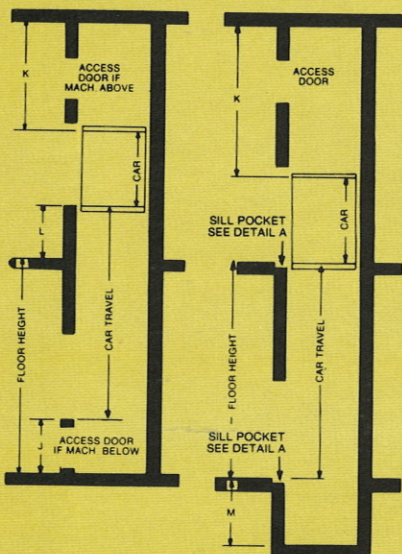
DIMENSION KEY — One or more openings must be larger than the car so the assembled car can be placed into the hatch or removed for service or repair. Front walls to be left out until door frames are installed.



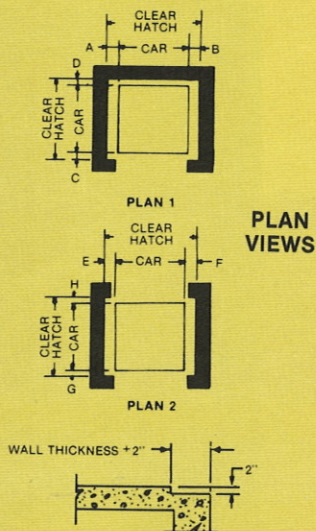
MODEL 1441 SHOWN

COUNTER HEIGHT LOADING

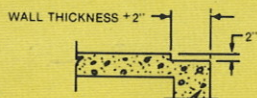
FLOOR LEVEL LOADING



ELEVATIONS



PLAN VIEWS



Detail A

Sill pocket — required at all floors for dumbwaiters that load and unload at floor level.

COUNTER HEIGHT LOADING

MODEL NO.	TYPE OF MACHINE	MACHINE LOCATION	PLAN 1												
			OPENINGS FRONT ONLY				PLAN 2								
			A	B	C	D	E	F	G	H	J	K	L	M	*
1401	Traction	Above	6 1/2	5 1/2	3	6 1/2	6 1/2	5 1/2	3	3	30	54	30	—	
1402	Traction	Below	6 1/2	5 1/2	3	6 1/2	6 1/2	5 1/2	3	3	34	42	30	—	
1431	Traction	Above	6 1/2	5 1/2	3	3	6 1/2	5 1/2	3	3	30	48	30	—	
1432	Traction	Below	6 1/2	5 1/2	3	3	6 1/2	5 1/2	3	3	34	42	30	—	
1420	Drum	Below	6	6	3	3	6	6	3	3	34	36	30	—	
1421	Drum	Above	6	6	3	3	6	6	3	3	30	48	30	—	
1441	Drum	Above	4	4	3	3	4	4	3	3	42	48	42	—	
1442	Drum	Below	4	4	3	3	4	4	3	3	42	42	42	—	
FLOOR LEVEL LOADING															
1405	Traction	Above	6 1/2	5 1/2	3	6 1/2	6 1/2	5 1/2	3	3	0	54	0	36	
1406	Traction	Below	6 1/2	5 1/2	3	6 1/2	6	6	3	3	0	42	0	36	
1422	Drum	Below	6	6	3	3	6	6	3	3	0	42	0	36	
1423	Drum	Above	6	6	3	3	6	6	3	3	0	60	0	36	

*Floor level loading with slide up doors, M = 12" minimum.

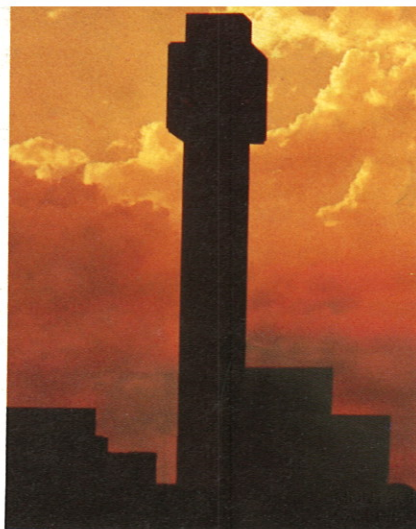
NOTES: Each car gate reduces useable F to B car space by 1 1/2". Dimension K is based on bi-parting car gates and/or doors.

EQUIPMENT SPECIFICATIONS

ALL EQUIPMENT IS DESIGNED TO MEET THE AMERICAN STANDARD SAFETY CODE — ANSI/ASME A17.1-1981

	Models 1401-1402	Models 1431-1432	Models 1405-1406	Models 1420-1421- 1422-1423	Models 1441-1442
MACHINES	Traction type machine with an elevator type motor of 30 minute rating. Worm gear has bronze rim. Worm is of hardened steel. Bearings are of high grade ball or roller type, lubricated by the gear case oil bath. The drive sheave is accurately scored for hoist cables. The brake is of the disc type.	Traction type machine with an elevator type motor of 30 minute rating. Worm gear has bronze rim. Worm is of hardened steel. Bearings are of high grade ball or roller type, lubricated by the gear case oil bath. The drive sheave is accurately scored for hoist cables. The brake is of the disc type.	Same as 1401-1402.	Same as 1401-1402 except a drive drum replaces the drive sheave.	Same as 1431-1432 except a drive drum replaces the drive sheave.
CARS	Car sides, back and top are 16 gauge steel. Car bottom is 16 gauge stainless steel. Car shelf is 16 gauge stainless steel. Standard finish is enamel, except for stainless steel. Bronze guide shoes are furnished.	Same as 1401-1402 except car bottom is 12 gauge steel, car shelf is 16 gauge steel. Both have enamel finish.	Car sides, back and top are 16 gauge steel. Car bottom is 11 gauge steel supported on the underside with a structural steel frame. Standard finish is enamel. Bronze guide shoes are furnished.	Car sides, back, top and shelf are 16 gauge steel. Car bottom is 11 gauge steel. When car is used for floor loading the car bottom is supported on the underside with a structural steel frame, and the shelf is omitted. Standard finish is enamel. Bronze guide shoes are furnished.	Car sides, top and bottom are 16 gauge steel. A removable file retainer is furnished. Standard finish is enamel. Nylon guide shoes are furnished.
STAINLESS STEEL CARS	Optional for all models. The stainless steel is 16 gauge for car sides, back, top and bottom. When cars are used for floor level loading, the stainless steel car bottom is 14 gauge.				
CAR GATES	16 gauge steel, enamel finish. Optional stainless steel gates are also 16 gauge.	Same as 1401-1402.	Same as 1401-1402.	Same as 1401-1402.	Same as 1401-1402 except bi-parting only.
GUIDES	Steel channel sections guide both the car and counterweight.	Same as 1401-1402.	Same as 1401-1402.	Two elevator T rail sections designed to support all down reactions.	Two steel T rail sections.
HOISTWAY ENTRANCES	16 gauge carbon steel frames, stainless steel sills and sound deadened door panels with glass vision lights. When doors are used for floor loading, the sills are 11 gauge carbon steel. Standard finish is prime paint except for stainless steel sills. Optional stainless steel doors are also 16 gauge. All entrances carry U/L labels.				
MACHINE ACCESS DOORS	Machine access doors are 24" x 24" with U/L label — Standard finish is prime paint. Optional finish is stainless steel.				

All specifications, dimensions and illustrations for dumbwaiters comply with product design and materials used as of date of publication. The right to make changes to product design and material used, without notice, is reserved.



MONTGOMERY SALES/SERVICE OFFICES

UNITED STATES

Alabama

Birmingham
Mobile
Montgomery

Alaska

Anchorage

Arizona

Phoenix
Tucson

Arkansas

Little Rock

California

Fresno
Long Beach
Lompoc
Los Angeles
Modesto
Palm Springs
Redding
Riverside
Sacramento
San Bernardino
San Diego
San Francisco
San Jose
Santa Maria

Colorado

Colorado Springs
Denver
Greeley

Connecticut

Hartford
(General Elev. Co.)

Delaware

Wilmington
(General Elev. Co.)

District of Columbia

Washington D.C.

Florida

Daytona Beach
Ft. Lauderdale
Ft. Myers
Gainesville
Jacksonville
Lakeland
Miami
Naples
Orlando
Pensacola
Sarasota/Bradenton
St. Petersburg
Tallahassee
Tampa
West Palm Beach

Georgia

Atlanta
Augusta
Macon

Hawaii

Hilo
Honolulu
Wailuku

Illinois

Bloomington
Carbondale
Chicago
Decatur
Dixon
Galesburg

Joliet

LaSalle
Moline
(Corp. Hdqts.)
Peoria
Quincy
(Wagner Elev. Serv., Inc.)
Rock Island
Rockford
(Lamps Elev. Sales
& Serv.)
Springfield
Sterling
Indiana
Fort Wayne
(Early Elev. Corp.)
Indianapolis
Kokomo
(Early Elev. Corp.)
Muncie
South Bend
(Early Elev. Corp.)

Iowa

Burlington
(Wagner Elev. Serv., Inc.)
Cedar Rapids
Clinton
Des Moines
Dubuque
Iowa City
Ottumwa
(Wagner Elev. Serv., Inc.)
Sioux City
(Carter Elev. Co., Inc.)
Waterloo
Kansas
Hays
Pittsburg
Salina
Topeka
Wichita
Kentucky
Bowling Green
(Murphy Elev. Co.)
Lexington
(Murphy Elev. Co.)
Louisville
(Murphy Elev. Co.)
Richmond
(Murphy Elev. Co.)

Kansas

Kentucky

Kentucky

Kentucky

Kentucky

Kentucky

Kentucky

Kentucky

Kentucky

Kentucky

Kentucky

Kentucky

Kentucky

Kentucky

Kentucky

Kentucky

Kentucky

Kentucky

Kentucky

Kentucky

Kentucky

Kentucky

Kentucky

Kentucky

Kentucky

Kentucky

Kentucky

Kentucky

Kentucky

Kentucky

Kentucky

Kentucky

Kentucky

Kentucky

Kentucky

Kentucky

Kentucky

Kentucky

Kentucky

Kentucky

Kentucky

Kentucky

Kentucky

Kentucky

Kentucky

Kentucky

Kentucky

Michigan

Ann Arbor
Benton Harbor
Detroit
Flint
Grand Rapids
Lansing
Muskegon
Traverse City
Minnesota
Minneapolis-St. Paul
Mississippi
Biloxi
Hattiesburg
Jackson
Meridian
Missouri
Columbia
Jefferson City
Joplin
Kansas City
Kirksville
(Wagner Elev. Serv., Inc.)
St. Joseph
St. Louis
(Reliance Elev. Co.)

Minnesota

Mississippi

Mississippi

Mississippi

Mississippi

Mississippi

Mississippi

Mississippi

Mississippi

Mississippi

Mississippi

Mississippi

Mississippi

Mississippi

Mississippi

Mississippi

Mississippi

Mississippi

Mississippi

Mississippi

Mississippi

Mississippi

Mississippi

Mississippi

Mississippi

Mississippi

Mississippi

Mississippi

Mississippi

Mississippi

Mississippi

Mississippi

Mississippi

Mississippi

Mississippi

Mississippi

Mississippi

Mississippi

Mississippi

Mississippi

Mississippi

Mississippi

Mississippi

Mississippi

Mississippi

Mississippi

Mississippi

Mississippi

Mississippi

Mississippi

Mississippi

Mississippi

Mississippi

Mississippi

Mississippi

Mississippi

Mississippi

Mississippi

Mississippi

Mississippi

Mississippi

Mississippi

Mississippi

Mississippi

Mississippi

Mississippi

Mississippi

Mississippi

Mississippi

Mississippi

Mississippi

Watertown

(Midstate Elev. Co., Inc.)
White Plains
(General Elev. Co.)

North Carolina

Boone
Charlotte
Raleigh

Ohio

Akron
Cincinnati
Cleveland
Columbus
Dayton
Toledo
(Toledo Elev. &
Machine Co.)

Oklahoma

Enid
Oklahoma City
Stillwater
Tulsa

Oregon

Eugene
Portland

Pennsylvania

Allentown
(General Elev. Co.)
Harrisburg
(General Elev. Co.)
Lancaster
(General Elev. Co.)
Philadelphia
(General Elev. Co.)
Pittsburgh
(General Elev. Co.)
Reading
(General Elev. Co.)
Scranton
(Grindel Elev. Co.)
Williamsport
(General Elev. Co.)
Windber
(Eastern Elev. Serv.
& Sales)
Wilkes-Barre
(General Elev. Co.)

South Carolina

South Carolina

South Carolina

South Carolina

South Carolina

South Carolina

South Carolina

South Carolina

South Carolina

South Carolina

South Carolina

South Carolina

South Carolina

South Carolina

South Carolina

South Carolina

South Carolina

South Carolina

South Carolina

South Carolina

South Carolina

South Carolina

South Carolina

South Carolina

South Carolina

South Carolina

South Carolina

South Carolina

South Carolina

South Carolina

South Carolina

South Carolina

South Carolina

South Carolina

South Carolina

South Carolina

South Carolina

South Carolina

El Paso

Fort Worth
Galveston
Houston
Lubbock
Odessa
San Antonio
Tyler
Waco

Utah

Salt Lake City

Vermont

Burlington

Virginia

Norfolk
(General Elev. Co.)
Richmond
(General Elev. Co.)

Washington

Olympia
Seattle
Spokane
Tacoma
Yakima

West Virginia

Charleston
(Murphy Elev. Co.)
Huntington
(Murphy Elev. Co.)

Wisconsin

Appleton
(J. B. Elev. Co.)
Green Bay
(J. B. Elev. Co.)
Madison
(Braun Electric &
Elevator, Inc.)

Wyoming

Casper
Cheyenne

Canada

Alberta

Calgary
Edmonton

British Columbia

Fort St. John
Kamloops
Kelowna
Nanaimo
Prince George
Prince Rupert
Vancouver
Victoria

Manitoba

Winnipeg

Newfoundland

(Eastern Elevator
Services, Ltd.)

Ontario

Barrie
Belleville
Brockville
Cornwall

Quebec

Quebec City

Saskatchewan

Saskatoon

Argentina

Buenos Aires
(Ascensores Ing.
Guillemi S.R.L.)

Bahamas

Nassau
(Basden Elev. Co., Ltd.)

Guam

Agana

Mexico

Mexico 8 D.F., Mexico
(Elevadores de
Mexico S.A.)

Panama

Afiliada A. Hojalateria
(Instalaciones
Tecnicas, S.A.)

Philippines

Manila

Republic of China

Taipei Taiwan
(Delta Enterprises, Ltd.)

Republic of

Dominica

Santo Domingo
Dominican Republic
(Guridi Comercial S.A.)

Saudi Arabia

Riyadh Saudi Arabia
(T. Frederick Jackson
International Ltd.)

Venezuela

Caracas
(C. A. Venezolana
de Ascensores
Cavenas)

Other

Numerous other
Authorized Representatives
are located throughout
the world.



montgomery

ELEVATORS/ESCALATORS/POWER WALKS & RAMPS

MONTGOMERY ELEVATOR COMPANY, MOLINE, ILLINOIS 61265 MONTGOMERY ELEVATOR COMPANY, LIMITED, TORONTO, ONTARIO, M9B3S5 OFFICES IN PRINCIPAL CITIES OF NORTH AMERICA.